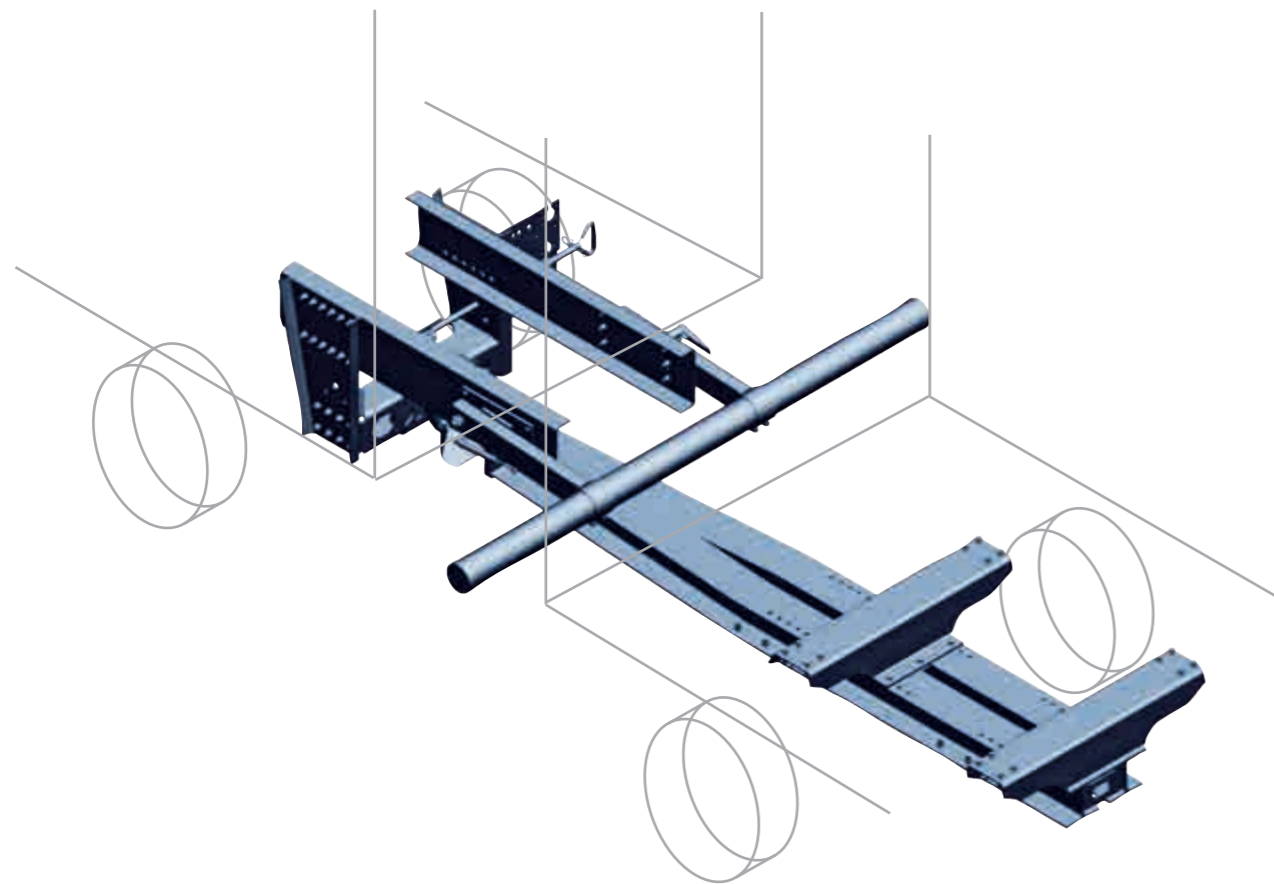
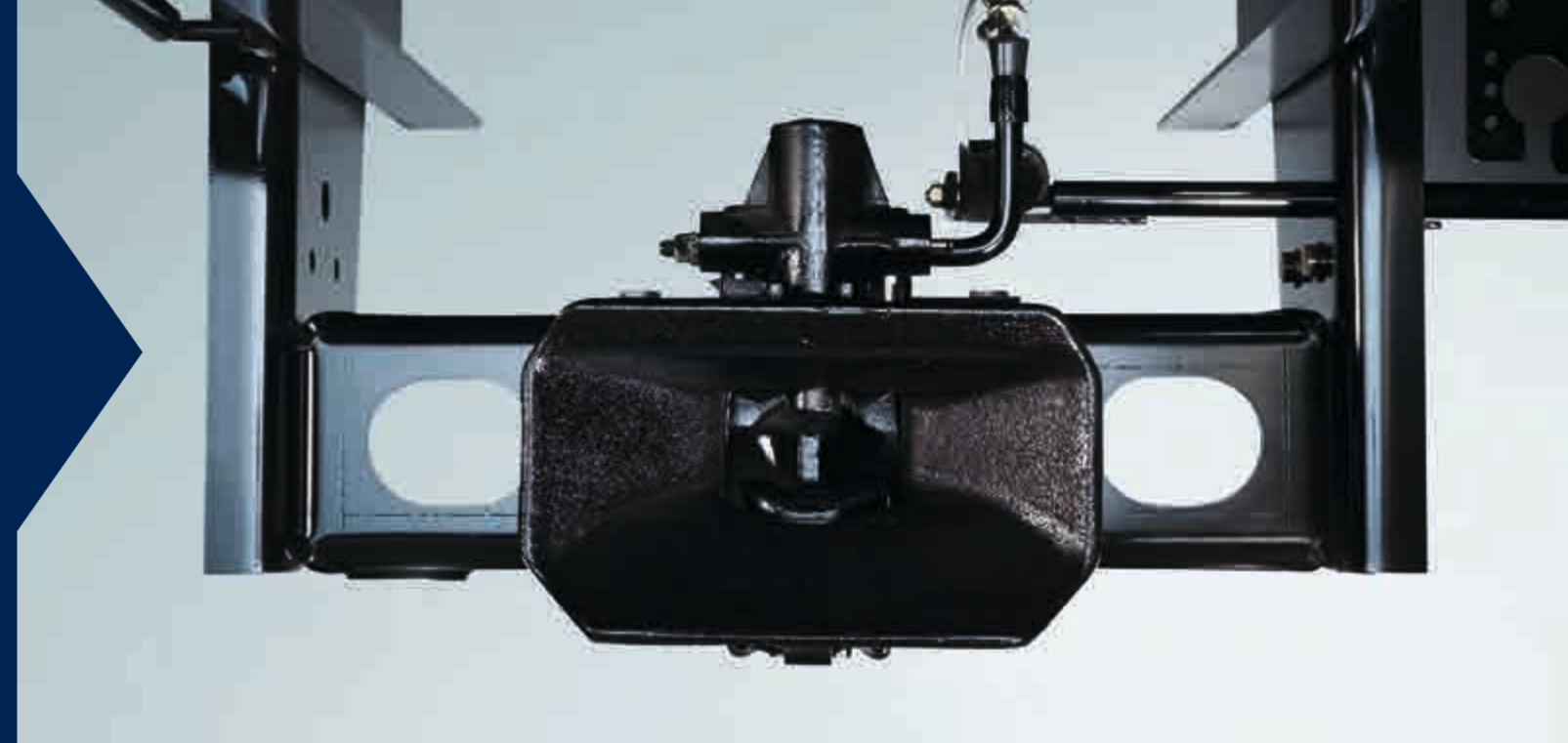


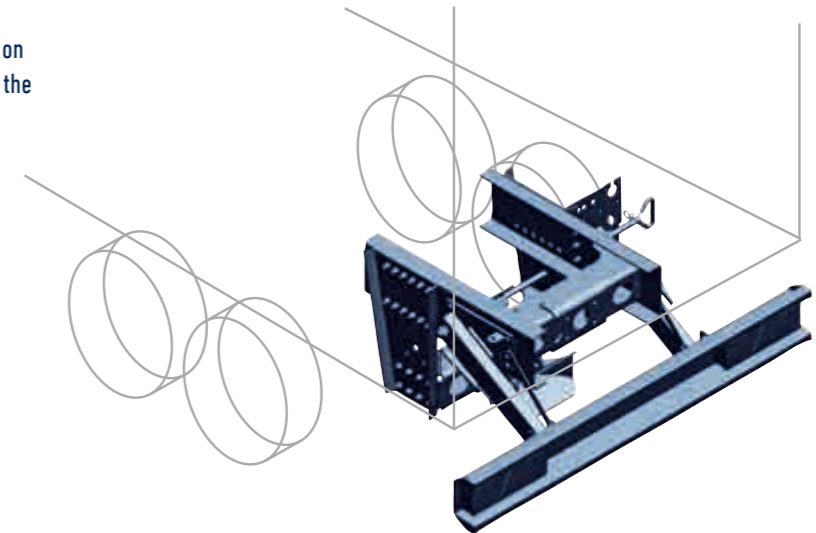
For assembly on the tractor unit. Hitch blocks and crossmembers from BPW.

BPW hitch blocks are assembled closely on the rear axle of the tractor unit and create a secure connection between the towing vehicle and the trailer. They have been developed for trailers with a permissible gross weight of up to 24 t and are suitable even for extremely heavy loads.



The hitch block – which is fitted on the vehicle frame of the tractor unit – enables a centre axle drawbar trailer or a low-coupled turntable drawbar trailer to be coupled. It features a corresponding coupling to accommodate the towing eye.

BPW end crossmembers for interior assembly on the vehicle frame of the tractor unit complete the range of products.



BPW HITCH BLOCKS – FEATURES AND BENEFITS

- ▶ Permitted gross trailer weight up to 24 t
- ▶ Drawbar loads up to 2,500 kg (V value up to 86 kN)
- ▶ Overall heights of 130 to 400 mm, depending on the version
- ▶ With ECE approval or individual certificate
- ▶ BPW remote operation devices available with general type approval (German ABE)
- ▶ For bolting to vehicle frame
- ▶ Optional vehicle-specific drilling pattern
- ▶ Optionally with couplings (e.g. Orlandi, Ringfeder, Rockinger) and plug holders
- ▶ Treated with zinc phosphate, with cathaphoretic dip-coating (KTL_{Zn})

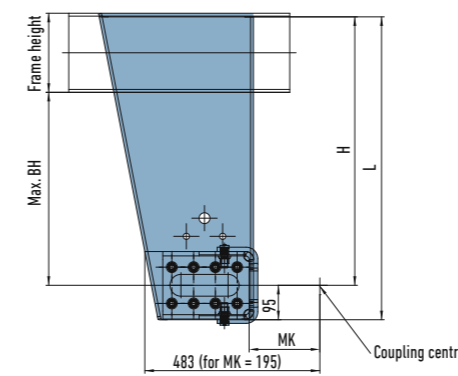
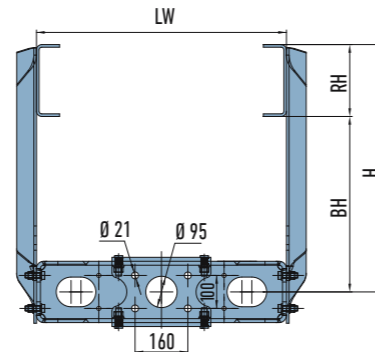
BPW hitch block

AB 75 series

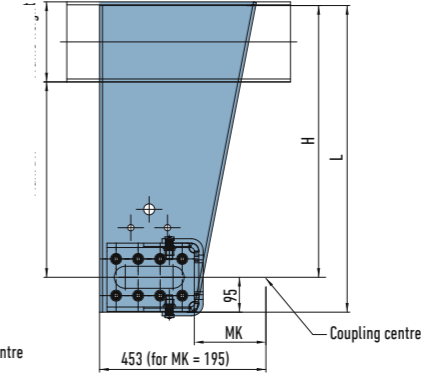
(ECE approval)

- ▶ With ECE approval no. E1-55R-012559
- ▶ Cataphoretic dip-coating (KTL_{zn}) in top-coat quality
- ▶ For steering angles of up to 90°
- ▶ Bolted directly to the vehicle frame
- ▶ The permissible V value depends on the coupling centre (MK) dimension
- ▶ Drilling pattern for couplings in accordance with DIN 74051/74052
- ▶ FB10 cable remote operation, can be assembled on both sides

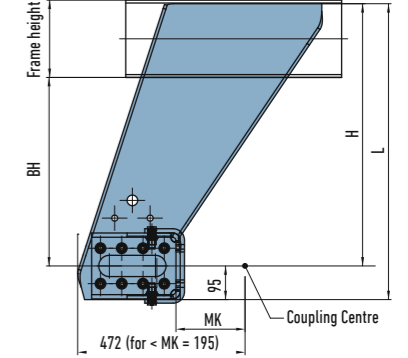
- ▶ Also available with mechanical remote operation
- ▶ For drawbar loads up to 2,500 kg
- ▶ Stepless overall heights (BH) up to 400 mm
- ▶ Any combination with various clear widths (LW)
- ▶ Technical support for calculating the max. permissible V values and designing suitable bolted connections
- ▶ Detailed information is available in the technical data sheets



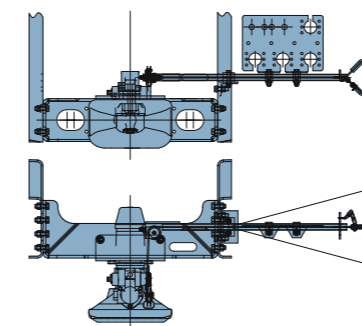
SV version (diagonal front)



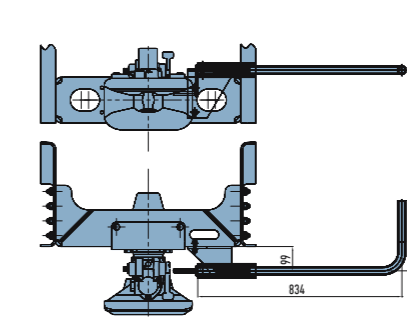
SH version (diagonal rear)



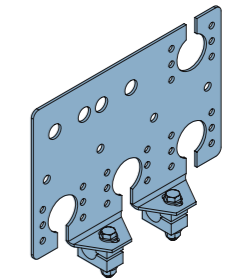
GK version (cranked)



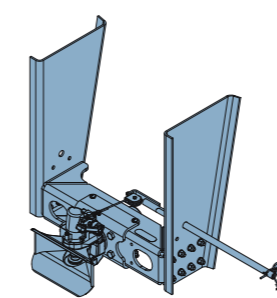
FB10 cable remote operation
ABE 90779*02



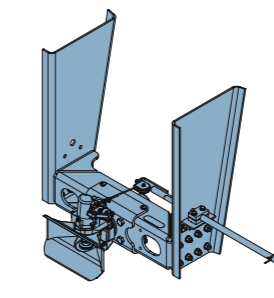
Mechanical remote operation



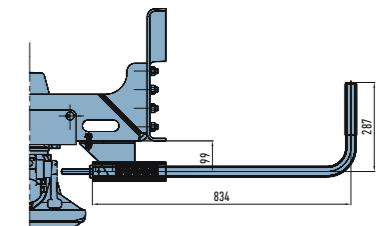
Plug holder



FB10, welded version



FB10, clamped version



Mechanical remote operation

TYPE	VERSION	CLEAR WIDTH LW (mm)	SIDE SECTION HEIGHT H ¹⁾ (mm)	MAX. OVERALL HEIGHT BH ²⁾ (mm)	HIGHER DRAWBAR LOADS	BPW NO.	WEIGHT (GK version, LW 758 kg)
AB 75... V value = 75 kN (for MK = 195 mm) D value = 190 kN Dc value = 130 kN Drawbar load 1,000 kg	-SV -SH -GK	758/762 770/790 802/850 854/862 866	415	130	2,000 kg (V = 58.7 kN) 2,500 kg (V = 50.5 kN)	51.47.41.xxxx	74
			440	150		51.47.44.xxxx	75
			480	200		51.47.48.xxxx	78
			510	230		51.47.51.xxxx	80
			540	250		51.47.54.xxxx	81
			570	300		51.47.57.xxxx	83
			610	330		51.47.61.xxxx	85
			640	350		51.47.64.xxxx	87
			690	400		51.47.69.xxxx	90
			740	400		51.47.74.xxxx	93
	-QT End crossmember for tractor unit	742/752 774/784 794				51.47.00.4xxx	45

Higher characteristic values depending on coupling centre (MK), see data sheet. ¹⁾ Standard dimensions in bold. ²⁾ Overall height depending on frame height. All versions also available on request with drill pattern (SG) and installed coupling.

Possible coupling variants assembled in hitch block or loose

TRAILER COUPLINGS	BOLT DIAMETER (mm)	DRILLING PATTERN (mm)	MK (mm)	V VALUE Max. (kN)	DRAWBAR LOAD (kg)	BPW NO.	WEIGHT (kg)
Orlandi E525 D = 200 kN/Dc = 135 kN	50	160 x 100	178	75	1,000	05.801.98.63.0	42
				50	2,500		
Rockinger 500A66200 D = 200 kN/Dc = 135 kN	50	160 x 100	177	90	1,000	05.801.95.08.0	50
				60	2,500		
Ringfeder 5055A D = 200 kN/Dc = 135 kN	50	160 x 100	175	75	1,000	05.801.95.57.0	50
				63	2,000		
Rockinger 400A51201 D = 130 kN/Dc = 90 kN	40	160 x 100	164	35	1,000	05.801.95.11.0	35

All versions include electrical remote display. Please note that the permissible Dc and V values of the hitch block must be tailored to the desired trailer coupling and the towing eye.

BPW ACCESSORIES FOR AB 75

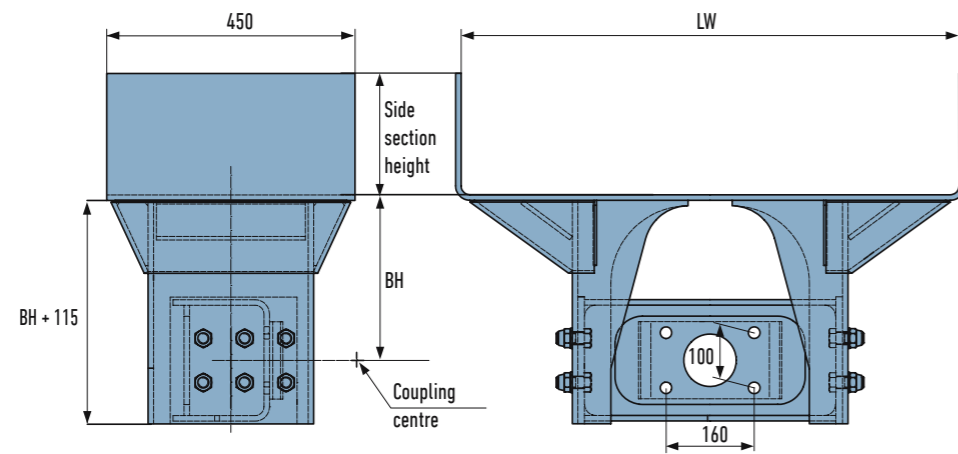
	BPW NO.
FB10 cable remote operation, welded version, can be assembled on both sides	51.98.11.0018
FB10 cable remote operation, clamped version, can be assembled on both sides	51.98.11.0019
Mechanical remote operation	51.98.11.0020
Plug holding plate	05.801.95.16.0
Upper crossmember for Mercedes (in frame, LW 850 mm)	05.801.98.56.0
Intermediate plates for side section/crossmember t = 2 mm (2 units), up to max. 20 mm each side	09.801.95.14.0
Intermediate plates for side section/crossmember t = 6 mm (2 units), up to max. 20 mm each side	09.801.95.15.0
Bolt kit for side section/crossmember (16 units, bolts M16 x 50, nuts, washers)	09.801.95.12.0
Bolt kit for side section/crossmember (16 units, bolts M16 x 60, nuts, washers)	09.801.95.16.0
Bolt kit for side section/frame (24 units, bolts M16 x 50, nuts, washers)	09.801.95.13.0
Side sections for AB 75 in pairs	On request

BPW hitch block

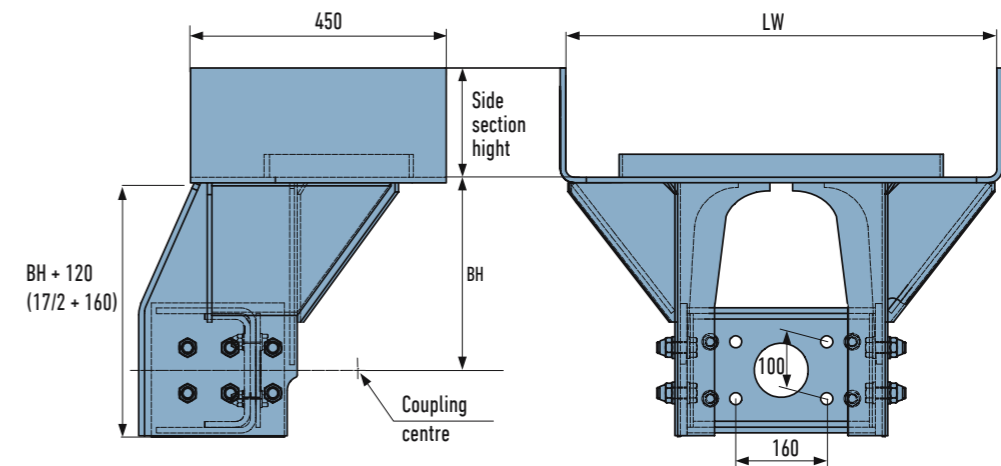
PAB 17 series, straight

(Individual certificate)

- ▶ The stated overall heights (BH) and clear widths (LW) can be combined as standard
- ▶ Cataphoretic dip-coating (KTL_{zn}) in top-coat quality
- ▶ For steering angles of at least 90°
- ▶ Bolted directly to the vehicle frame
- ▶ The permissible V value depends on the coupling centre (MK) dimension
- ▶ Drilling pattern for couplings 160 x 100 mm, in accordance with DIN 74051/74052
- ▶ Use of FB10 cable remote operation
- ▶ Also available with mechanical remote operation
- ▶ Drawbar loads up to 2,500 kg possible
- ▶ Techn. support for calculating the max. permissible V values and designing suitable bolted connections
- ▶ Detailed information is available in the technical data sheets
- ▶ Side section height depends on the clear width (LW)



PAB 17 series, cranked



TYPE	VERSION	CLEAR WIDTH LW (mm)	MAX. OVERALL HEIGHT (BH) (mm)	DRAWBAR LOAD (kg)	DC VALUE (D VALUE) (kN)	BPW NO.	WEIGHT Approx. (kg)
PAB 17/1 V value = 50 kN (for Mk = 195 mm) 18 t with individual approval	Straight	758	145/175	1,000	100 (110)	51.40.xx.xxxx	120
		762	200/230				
		770	260/290				
PAB 17/3 V value = 75 kN (for Mk = 195 mm) 24 t with individual approval	Straight	790	190/230	1,000	101 (120)	51.42.xx.xxxx	130
		802	260/290				
		850					
PAB 17/3 V value = 47 kN (for Mk = 195 mm) 18 t with individual approval	Straight	854	190/230	2,000	101 (120)	51.42.xx.xxx	130
		862					
		866	260/290				

For couplings, see page 14. For accessories, see page 15.
Please note that the permissible Dc and V values of the hitch block must be tailored to the desired trailer coupling and the towing eye.

TYPE	VERSION	CLEAR WIDTH LW (mm)	MAX. OVERALL HEIGHT BH (mm)	DRAWBAR LOAD (kg)	DC VALUE (D VALUE) (kN)	BPW NO.	WEIGHT Approx. (kg)
PAB 17/1-G V value = 50 kN (for Mk = 195 mm) 18 t with individual approval	Cranked	758 762 770 790	240/270	1,000	110 (120)	51.41.xx.xxxx	120
			300/340				
PAB 17/2-G V value = 75 kN (for Mk = 195 mm) 24 t with individual approval	Cranked	802 850 854 862 866	240	1,000	110 (120)	51.45.xx.xxxx	130
PAB 17/2-G V value = 47 kN (for Mk = 195 mm) 18 t with individual approval	Cranked		300	2,000	105 (120)	51.45.xx.xxx	130

For couplings, see page 14. For accessories, see page 15.
Please note that the permissible Dc and V values of the hitch block must be tailored to the desired trailer coupling and the towing eye.