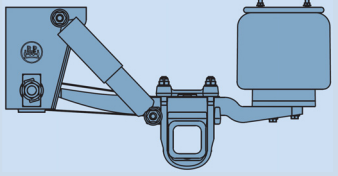
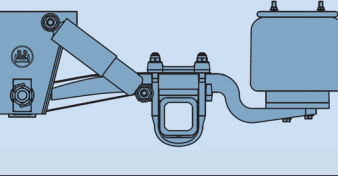
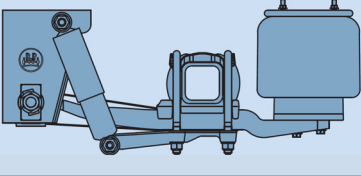




Series	Air-spring axles and suspensions	Trailing arm 70 mm	Air bag BPW		Axle type with disc brake		Ride high FH (mm)	Suspensions with disc brake to drawing ALII-TSB.0 Sheet No.					
			30/30K	36/36K	TSB 3709	TSB 4309		TSB 3709	TSB 4309				
ALO		Single leaf	•	-	SKHSF... SKHBF... SKHZF...	SHSF... SHBF... SHZF...	390 - 510	Sheet 1	Sheet 1a				
			-	•				Sheet 2	Sheet 2a				
	Self steering axles LL with offset trailing arm	Single leaf	•	-	SKHSFH..LL SKHBFH..LL	SHSFH..LL SHBFH..LL	430 - 510	Sheet 3	Sheet 3a				
			-	•				Sheet 4	Sheet 4a				
			•	-				Sheet 5	Sheet 5a				
			-	•				Sheet 6	Sheet 6a				
Two-sided lifting device								Sheet 7a					
ALM / ALMT		Single leaf	•	-	SKHSF... SKHBF... SKHZF...	SHSF... SHBF... SHZF...	245 - 420	Sheet 8	Sheet 8a				
			-	•				Sheet 9	Sheet 9a				
	Self steering axles LL with offset trailing arm	Single leaf	•	-	SKHSFH..LL SKHBFH..LL	SHSFH..LL SHBFH..LL	255 - 420	Sheet 10	Sheet 10a				
			-	•				Sheet 11	Sheet 11a				
			Self steering axles LL with trailing arm	Single leaf			•	-	SKHSFH..LL SKHBFH..LL	SHSFH..LL SHBFH..LL	350 - 420	Sheet 12	Sheet 12a
							-	•				Sheet 13	Sheet 13a
Two-sided lifting device								Sheet 14a					
ALU		Single leaf	•	-	SKHSF... SKHBF... SKHZF...	SHSF... SHBF... SHZF...	205 - 300	Sheet 15	Sheet 15a				
			-	•				Sheet 16	Sheet 16a				
	Self steering axles LL with trailing arm	Single leaf	•	-	SKHBFH..LL	SHBFH..LL	215 - 300	Sheet 17	Sheet 17a				
	One-sided lifting device								Sheet 19				
	Two-sided lifting device								Sheet 19a				



Weight variations are within the permitted DIN tolerances for the respective production process, given in kg.

Series	Suspension to drawing ALII-TSB.0 Sheet No.	Line	Axle weights																		SP = Track FM = Spring centre								
			Weight of air suspension parts	Weight of axle attachment	FM 900			FM 980			FM 1100			FM 1200			FM 1300			FM 1400									
					SP 1820 120x15	SP 1825 120x15	SP 1880 120x15	SP 1885 120x15	SP 1920 120x15	SP 1925 120x15	SP 2000 120x15	SP 2005 120x15	SP 2040 120x15	SP 2045 120x15	SP 2000 120x10	SP 2005 120x10	SP 2040 120x10	SP 2045 120x10	SP 2040 120x10	SP 2045 120x10	SP 2095 120x10	SP 2100 120x10	SP 2140 120x10	SP 2145 120x10					
ALO	Sheet 1	1	92	31																									
		2	97		278	268	280	270	282	272																			
		3	99																										
	Sheet 2	1	101	31																									
		2	105		278	268	280	270	282	272																			
		3	108																										
ALM / ALMT	Sheet 8	1	99	31																									
		2	101																										
		3	104																										
		4	97		278	268	280	270	282	272																			
		5	106																										
		6	102																										
		7	104																										
	Sheet 9	1	108	31																									
		2	110																										
		3	113																										
		4	106		278	268	280	270	282	272																			
		5	115																										
		6	110																										
		7	113																										
ALU	Sheet 15	1	97	42																									
		2	99		278	268	280	270	282	272	286	276	288	278	274		275		275		278		279						
		3	99																										
	Sheet 16	1	105	42																									
		2	108		278	268	280	270	282	272	286	276	288	278	274		275		275		278		279						
		3	108																										
Lift	Sheet 7a, 14a, 19a		Two-sided lifting device, bracket version = 34 kg																										
	Sheet 19		Two-sided lifting device, channel crossmember version = 33 kg																										
		One-sided lifting device = 29 kg																											

Additional notes regarding weight indication

Without dust cover
 Trailing arm length L2 to ALO/ALU = 310 mm
 Trailing arm length L2 to ALM/ALMT = 380 mm
 Trailing arm thickness 1x56mm
 The spring centre 900 respectively 980 might require a trailing arm thickness 1x62, centre of gravities acc. to page ALII-III are to be considered.
 Air suspended axles with an air bag BPW 30 / 30K having an offset of V=20 with an offset V=60 please consider additional weight.
 Axle beam 120x15 (Spring centre 900-1100)
 Axle beam 120x10 (Spring centre 1200-1400)

Additional weight per axle

1) Axle type SKHBF...9010 (Axle with B-hub) = 10 kg
 Weights = 8 kg
 Dust cover = 2.2 kg
 Air bag 30 with offset V 60 = 4.2 kg
 Air bag 30 K with offset V 60 = 3.7 kg
 Axle beam from 120x10 to 120x15 = 0.0115 kg x Track (SP)

Series	Leaf spring			Additional weight per axle
	Trailing arm length L1 (mm)	Trailing arm length L2 (mm)	Trailing arm thickness (mm)	
ALO / ALU	500	380	1x56	3.7 kg
			1x62	8.6 kg
ALO / ALU	500	310	1x62	2.2 kg
ALM			380	1x62
ALMT		380	1x62	6.8 kg

Determining total weight

Air suspension parts
+ Axle attachment
+ Axle
+ Additional weight
= Total weight



Series	Suspension to drawing ALII-TSB.0 Sheet No.	Line	Weight variations are within the permitted DIN tolerances for the respective production process, given in kg							
			Axle weights							
			Weight of air suspension parts	Weight of axle attachment	FM 980		FM 1080 (1005, 1050)			
				SP 2040 120x15	SP 2045 120x15	SP 2095 120x15	SP 2100 120x15	SP 2140 120x15	SP 2145 120x15	
ALO	Sheet 3	2	107	31	427 ¹⁾	415	430 ¹⁾	418	432 ¹⁾	420
		3	110							
	Sheet 4	2	116	31	427 ¹⁾	415	430 ¹⁾	418	432 ¹⁾	420
		3	119							
	Sheet 5	2	100	31	427 ¹⁾	415	430 ¹⁾	418	432 ¹⁾	420
		3	103							
	Sheet 6	2	109	31	427 ¹⁾	415	430 ¹⁾	418	432 ¹⁾	420
		3	112							
ALM / ALMT	Sheet 10	1	102	31	427 ¹⁾	415	430 ¹⁾	418	432 ¹⁾	420
		2	105							
		5	110							
		6	103							
		7	106							
	Sheet 11	6	112	31	427 ¹⁾	415	430 ¹⁾	418	432 ¹⁾	420
		7	115							
	Sheet 12	6	102	30	427 ¹⁾	415	430 ¹⁾	418	432 ¹⁾	420
		7	104							
	Sheet 13	6	110	30	427 ¹⁾	415	430 ¹⁾	418	432 ¹⁾	420
7		113								
ALU	Sheet 17	1	100	43	445					
		2	102			FM1005		FM1050		
		3	102			448		450		

Additional notes regarding weight indications

With dust cover
 Trailing arm length L2 = 380mm
 Trailing arm thickness 3D trailing arm (sidely cranked) = 1x62mm
 Trailing arm thickness (sidely straight trailing arm) = 1x56mm
 Air suspended axles with an air bag BPW 30 / 30K having an offset of V=20
 With an offset V=60 please consider additional weight.

Axle beam 120x15

Additional weight per axle

- 1) Axle type SKHBFH...LL 9010 (axle with B-hub) = 18 kg
 Bolt-on brackets = 8 kg
 Steering damper kit = 2 kg
 Air bag 30 having an offset V 60 = 4,2 kg
 Air bag 30k having an offset V 60 = 3,7 kg

Series	Leaf spring			Additional weight per axle in kg
	Trailing arm length L1 (mm)	Trailing arm length L2 (mm)	Trailing arm thickness (mm)	
ALO Sheet 5, 6	500	380	1x62	4,9 kg
ALM Sheet 12, 13				5,2 kg
ALU Sheet 17				4,9 kg

Determining total weight

+ Air suspension parts
+ Axle attachment
+ Axle
+ Additional weight
= Total weight



Weight variations are within the permitted DIN tolerances for the respective production process, given in kg.

Series	Suspension to drawing ALII-TSB.0 Sheet No.	Line	Axle weights													
			Weight of air suspension part	Weight of axle attachment	FM 900		FM 980			FM 1100		FM 1200		FM 1300		FM 1400
					SP 1820 120x15	SP 1880 120x15	SP 1920 120x15	SP 2010 120x15	SP 2040 120x15	SP 2000 120x10	SP 2010 120x10	SP 2040 120x10	SP 2040 120x10	SP 2095 120x10	SP 2140 120x10	
ALO	Sheet 1a	1	92	31	290	292	294				285	276	277 ¹⁾	277 ¹⁾	280 ¹⁾	281 ¹⁾
		2	97													
		3	99													
ALO	Sheet 2a	1	101	31	290	292	294				285	276	277 ¹⁾	277 ¹⁾	280 ¹⁾	281 ¹⁾
		2	105													
		3	108													
ALM / ALMT	Sheet 8a	1	99	31	290	292	294				285	276	277 ¹⁾	277 ¹⁾	280 ¹⁾	281 ¹⁾
		2	101													
		3	104													
		4	97													
		5	106													
		6	102													
		7	104													
	Sheet 9a	1	108	31	290	292	294				285	276	277 ¹⁾	277 ¹⁾	280 ¹⁾	281 ¹⁾
		2	110													
		3	113													
		4	106													
		5	115													
		6	110													
		7	113													
ALU	Sheet 15a	2	99	42	290	292	294	299	300	285	276	277 ¹⁾	286	280 ¹⁾	290	
		3	99													
	Sheet 16a	2	108													42
3		108														
Lift	Sheet 7a, 14a, 19a		Two-sided lifting device, bracket version = 34 kg													
			Two-sided lifting device, channel crossmember version = 33 kg													
	Sheet 19		One-sided lifting device = 29 kg													

Additional notes regarding weight indication

Without dust cover
 Trailing arm length L2 to ALO/ALU = 310 mm
 Trailing arm length L2 to ALM/ALMT = 380 mm
 Trailing arm thickness 1x56mm
 The spring centre 900 respectively 980 might require a trailing arm thickness 1x62, centre of gravities acc. to page ALII-III are to be considered.
 Air suspended axles with an air bag BPW 30 / 30K having an offset of V=20 with an offset V=60 please consider additional weight.
 Axle beam 120x15 (Spring centre 900-1100)
 Axle beam 120x10 (Spring centre 1200-1400)

Additional weight per axle

- 1) Axle type SHBF...9010 (Axles with B-hub) = 9 kg
 Bolt-on brackets = 8 kg
 Dust cover = 2.9 kg
 Air bag 30 having an offset V 60 = 4.2 kg
 Air bag 30K having an offset V 60 = 3.7 kg
 Axle beam from 120x10 to 120x15 = 0.0115 kg x Track (SP)

Series	Leaf spring			Additional weight per axle	
	Trailing arm length L1 (mm)	Trailing arm length L2 (mm)	Trailing arm thickness (mm)		
ALO / ALU	500	380	1x56	3.7 kg	
			1x62	8.6 kg	
ALO / ALU	500	310	1x62	2.2 kg	
ALM			380	1x62	5.2 kg
ALMT			380	1x62	6.8 kg

Determining total weight

Air suspension parts
+ Axle attachment
+ Axle
+ Additional weight
= Total weight



Series	Suspension to drawing AL II-TSB.0 Sheet No.	Line	Weight variations are within the permitted DIN tolerances for the respective production process, given in kg					
			Axle weights				SP = Track FM = Spring centre	
			Weight of air suspension parts	Weight of axle attachment	FM 980	FM 1080		
			SP 2040 120x15	SP 2040 120x15	SP 2095 120x15	SP 2140 120x15		
ALO	Sheet 3a	2	107	31	440 ¹⁾	440 ¹⁾	443 ¹⁾	445 ¹⁾
		3	110					
	Sheet 4a	2	116	31	440 ¹⁾	440 ¹⁾	443 ¹⁾	445 ¹⁾
		3	119					
	Sheet 5a	2	100	31	440 ¹⁾	440 ¹⁾	443 ¹⁾	445 ¹⁾
		3	103					
	Sheet 6a	2	109	31	440 ¹⁾	440 ¹⁾	443 ¹⁾	445 ¹⁾
		3	112					
ALM / ALMT	Sheet10a	1	102	31	440 ¹⁾	440 ¹⁾	443 ¹⁾	445 ¹⁾
		2	105					
		5	110					
		6	103					
		7	106					
	Sheet11a	6	112	31	440 ¹⁾	440 ¹⁾	443 ¹⁾	445 ¹⁾
		7	115					
	Sheet12a	6	102	31	440 ¹⁾	440 ¹⁾	443 ¹⁾	445 ¹⁾
		7	104					
	Sheet13a	6	110	31	440 ¹⁾	440 ¹⁾	443 ¹⁾	445 ¹⁾
7		113						
ALU	Sheet17a	1	102	43	454		455	458
		2	102					

Additional notes regarding weight indication
With dust cover
Trailing arm length L2 = 380 mm
Trailing arm thickness 3D trailing arm (sidely cranked) = 1x62mm
Trailing arm thickness (sidely straight trailing arm) = 1x56mm
Air suspensid axles with an air bag BPW 30 / 30K having an offset of V=20 with an offset V=60 please consider additional weight.
Axle beam 120x15

Additional weight per axle				
¹⁾ Axle type SHBFH...LL 9010 (axle with B-hub) = 17 kg Bolt-on brackets = 8 kg Steering damper kit = 2 kg Air bag 30 having an offset V 60 = 4.2 kg Air bag 30K having an offset V 60 = 3.7 kg				
Series	Leaf spring			Additional weight per axle in kg
	Trailing arm length L1 (mm)	Trailing arm length L2 (mm)	Trailing arm thickness (mm)	
ALO Sheet 5a, 6a	500	380	1x62	4.9 kg
ALM Sheet 12a, 13a				5.2 kg
ALU Sheet 17a				4.9 kg

Determining total weight
+ Air suspension parts
+ Axle attachment
+ Axle
+ Additional weight
= Total weight



Series	Suspension to drawing ALII-TSB.0 Sheet No.	Trailing arm 05.082..	Leaf thickness	L1	L2	Axle load Kg	Height of centre of gravity max. spring centre FM						
							Bold print = preferred series						
							900	980	1080	1200	1300	1400	
ALO	Sheet 1,1a	..13.90.2	1x56	500	310	8000	2250	2400		2800	3000	3200	
						9000	---	---		2500	2700	2850	
		..13.89.2			380	8000	2250	2400		2800	3000	3200	
						9000	---	---		2500	2700	2850	
	Sheet 2, 2a	..13.96.2	1x62	500	380	8000	2750	2950		---	---	---	
						9000	2450	2650		3100	3300	3500	
		..14.02.2			310	8000	2750	2950		---	---	---	
						9000	2450	2650		3100	3300	3500	
			10000	---	---		2750	2950	3150				
			10000	---	---		2750	2950	3150				
	Sheet 3, 3a Sheet 4, 4a	..13.93.2	1x62	500	380	8000		2950	3150				
		..13.94.2				9000		2650	2850				
Sheet 5, 5a Sheet 6, 6a	..13.89.2	1x56	500	380	8000		2400	2550					
					9000		2150	2300					
	..13.96.2			380	8000		2950	3150					
					9000		2650	2850					
ALM / ALMT	Sheet 8, 8a Sheet 9, 9a	..13.88.2 ¹⁾ ..14.09.2 ²⁾	1x56	500	380	8000	2250	2400		2800	3000	3200	
						9000	---	---		2500	2700	2850	
	Sheet 10, 10a Sheet 11, 11a	..13.95.2 ¹⁾ ..14.12.2 ²⁾	1x62	500	380	8000	2750	2950		---	---	---	
						9000	2450	2650		3100	3300	3500	
		Sheet 12, 12a Sheet 13, 13a	..13.88.2 ¹⁾	1x56	500	380	8000		2400	2550			
							9000		2150	2300			
		..13.95.2 ¹⁾	1x62	500	380	8000		2950	3150				
	9000						2650	2850					

1) Series ALM
2) Series ALMT

Series	Suspension to drawing ALII-TSB.0 Sheet No.	Trailing arm 05.082..	Leaf thickness	L1	L2	Axle load Kg	Height of centre of gravity max. spring centre FM						
							Bold print = preferred series						
							900	980	1080	1100	1200	1300	1400
ALU	Sheet 15 Sheet 15a Sheet 16 Sheet 16a	..13.90.2	1x56	500	310	8000	2000	2100		2300	2500	2650	2850
						9000	---	---		2050	2200	2350	2550
		..13.89.2			380	8000	2000	2100		2300	2500	2650	2850
						9000	---	---		2050	2200	2350	2550
	Sheet 17a	..13.96.2	1x62	500	380	8000	2400	2650		---	---	---	---
						9000	2100	2250		2500	2700	2900	3100
		..14.02.2			310	8000	2400	2650		---	---	---	---
						9000	2100	2250		2500	2700	2900	3100
			10000	---	---		2250	2400	2600	2800			
			10000	---	---		2250	2400	2600	2800			

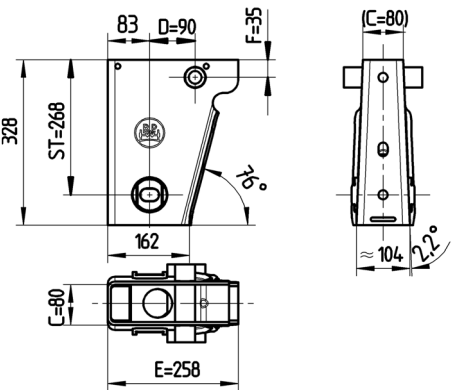
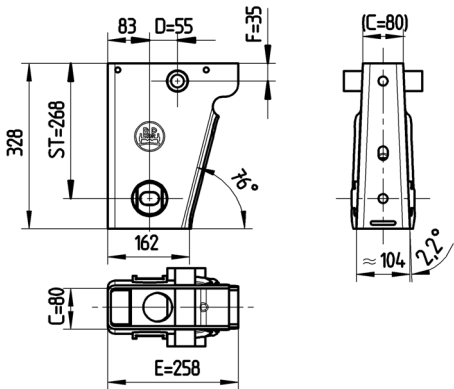
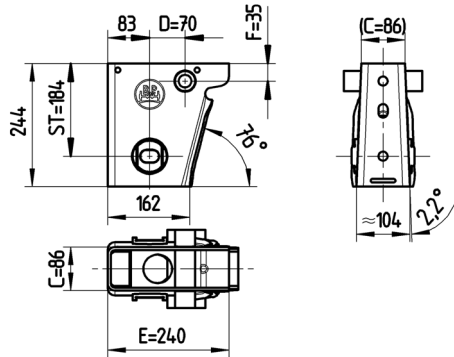
Series	Sheet 17	..13.89.2	1x56	500	380	spring centre FM				
						980	1005	1050		
						8000		2100	2125	2200
9000		1850	1875	1950						
..13.96.2	1x62	8000		2650	2675	2800				
		9000		2250	2275	2400				

Determining the height of the centre of gravity for axle units with a steering axle

Height of centre of gravity of rigid axle + gravity of steering axle = Height of centre of gravity

Example: $\frac{2500 + 2500 + 2200}{3} = 2400$

Calculation reference:
0.4g transverse acceleration lateral body tilt approx. 3.5 degrees without taking into consideration the tilt limit and the tyre deflection.

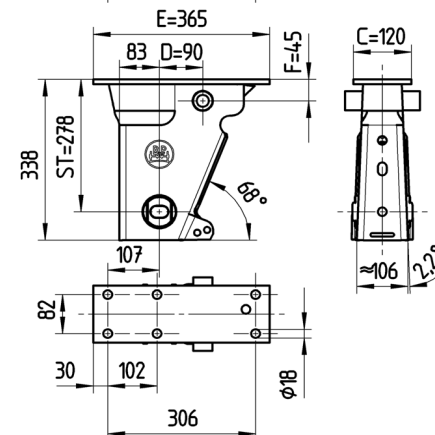
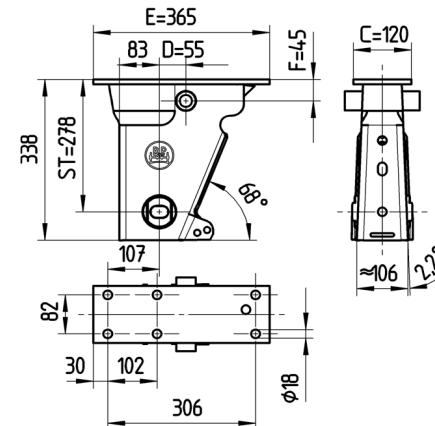
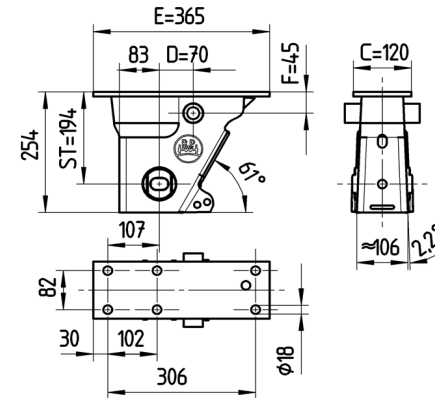


Standard brackets AL II

Note:

The hanger brackets and the frame must be reinforced so that the forces applied can be absorbed.

See the current installation instruction.

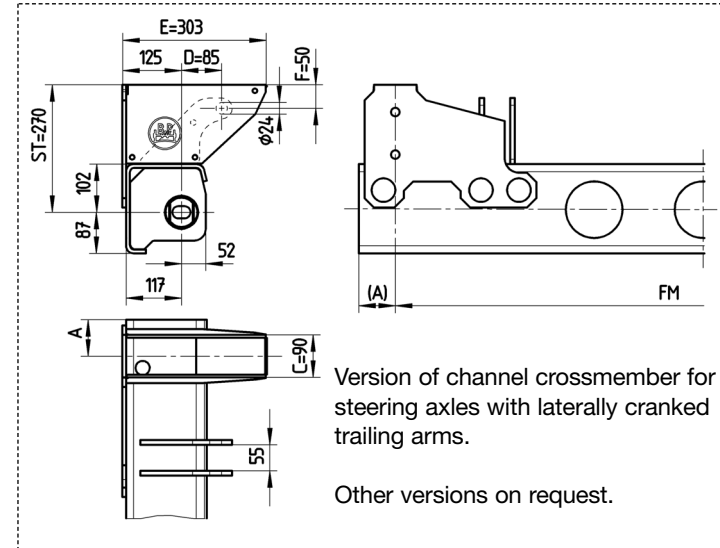
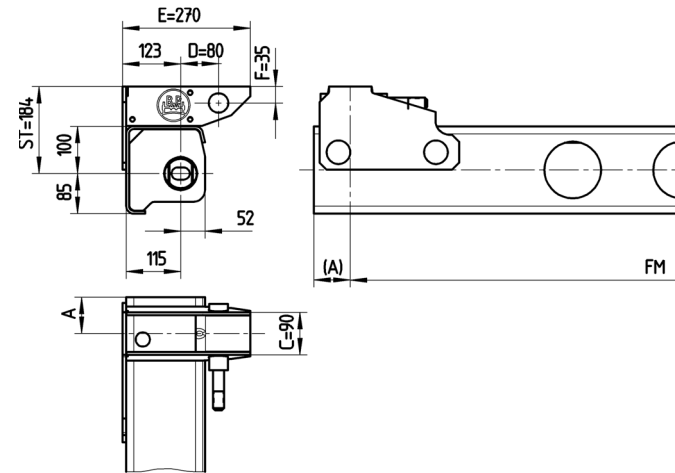
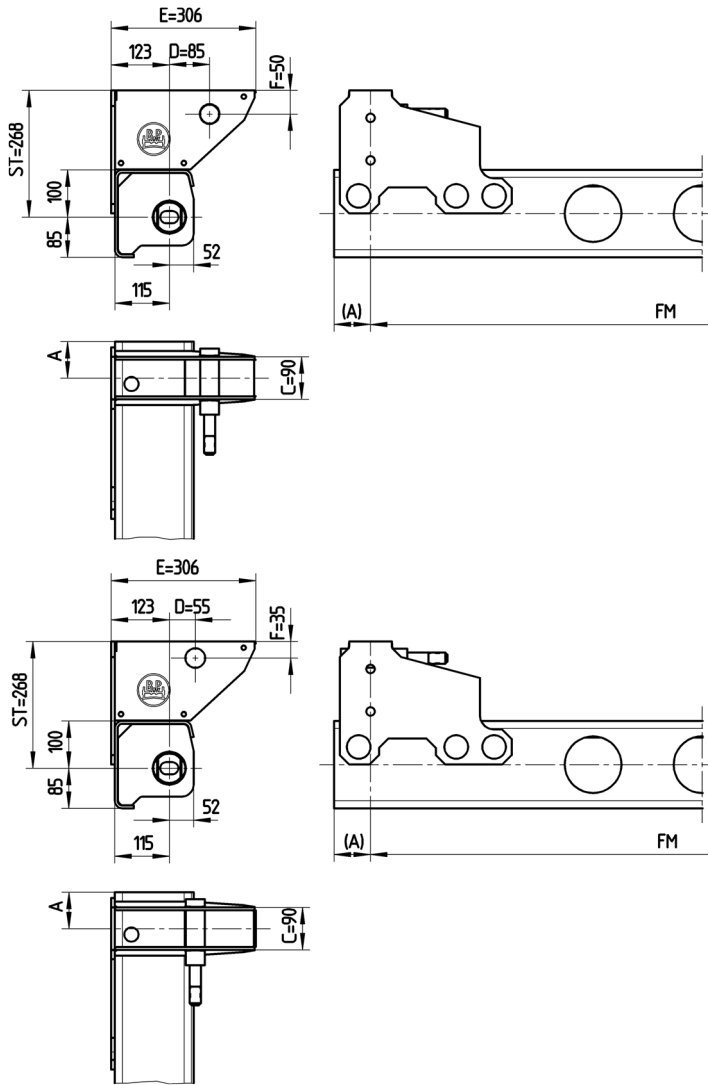


Bolt-on brackets AL II

Note:

The hanger brackets and the frame must be reinforced so that the forces applied can be absorbed.

See the current installation instruction.

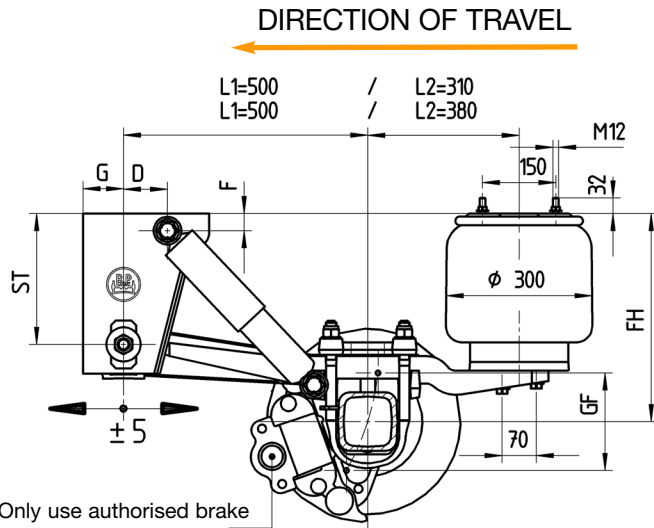


Measure A	Available spring centre FM				
	980	1100	1200	1300	1400
77	87	77	77	77	

Note
The frame must be strengthened so that it can absorb the forces applied.

See the current BPW installation instructions.

Example:
Air-spring axle with channel crossmember:
SKHSFALO 9010 C V30 → Version with channel crossmember

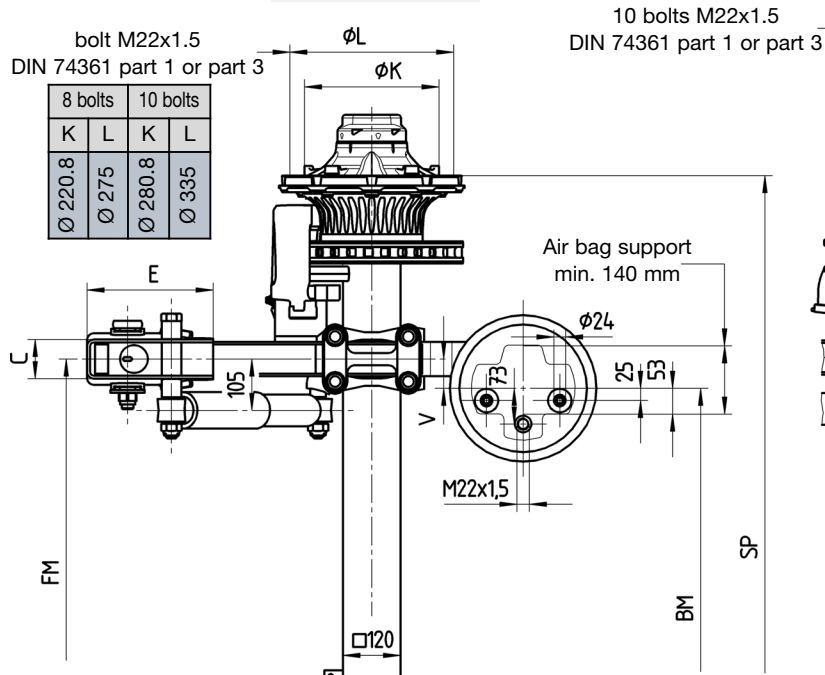


Only use authorised brake cylinders with internal seal max. Ø 191 mm

SKHSF... / SKHZF...

bolt M22x1.5
DIN 74361 part 1 or part 3

8 bolts		10 bolts	
K	L	K	L
Ø 220,8	Ø 275	Ø 280,8	Ø 335



Line	Series	~ adjustable ride height FH					Total spring travel GF ¹⁾	Air bag	Shock absorber 02.37...	Hanger bracket				Shock absorber mount		
		for single axles	for axle units	min. FH with axle raised	Empty without air	Loaded without air				ST	C	E	G	D	F	
2)	1	ALO	390-430	400-430	430	330	315	190	30K	..22.83.00	184	86	240	83	70	35
	2	ALO	420-470	430-470	460	360	345	190	30K	..22.83.00	268	80	258	83	90	35
	3	ALO	450-510	460-510	490	390	375	220	30	..22.88.00	268	80	258	83	90	35

1) Lifting heights acc. to TD-1242.0

2) Only suitable for semitrailers

3) The loading rating of the tyre mentioned in the drawing is in no relation to the axle load capacity. It is dependent on the information from the tyre manufacturer.

4) Note the maximum total width.

Axle type	Track SP with axle type		Spring centre FM	Air bag centre BM		Tyres recommended		
	..9010	..9008		V=20	V=60	10 bolts	8 bolts	
SKHSF..9010/9008	2000	2005	1200	1160	1080	385/65 R22.5 385/55 R22.5	385/65 R19.5 ³⁾ 435/50 R19.5 ⁴⁾ 445/45 R19.5 ⁴⁾	
SKHSF..9010/9008	2040	2045	1200	1160	1080			
SKHSF..9010/9008	2040	2045	1300	1260	1180			
SKHSF..9010/9008	2095	2100	1300	1260	1180			
SKHSF..9010/9008	2140	2145	1400	1360	1280			
SKHBF..9010	2000	--	1200	1160	1080	385/65 R22.5 385/55 R22.5	--	
SKHBF..9010	2040	--	1200	1160	1080			
SKHBF..9010	2040	--	1300	1260	1180			
SKHBF..9010	2095	--	1300	1260	1180			
SKHBF..9010	2140	--	1400	1360	1280			
SKHZF..9010/9008	1820	1825	900	860	780	275/70 R22.5		265/70 R19.5
SKHZF..9010/9008	1880	1885	980	---	860			
SKHZF..9010/9008	1920	1925	980	940	860			

Max. inclination angle of the semitrailer under full load and lowest adjustable ride height ±1°

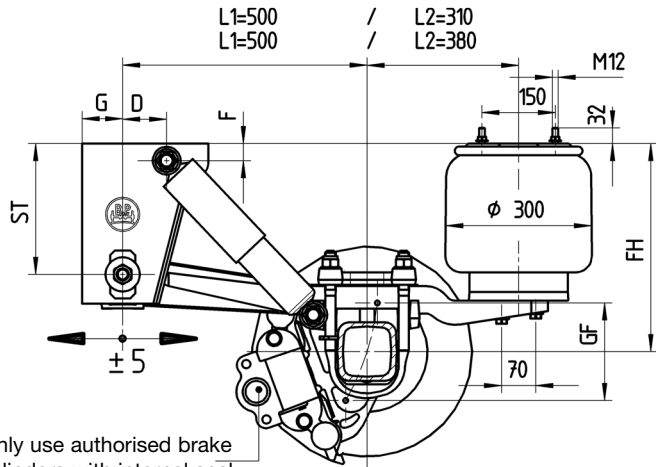
With trailing arm L1=500 / L2=310, bag pressures acc. to TE-1188.0 sheet 18

With trailing arm L1=500 / L2=380, bag pressures acc. to TE-1188.0 sheet 15

The hanger brackets, air bag supports and the frame must be reinforced so that the forces applied can be absorbed. See the current BPW installation instructions.



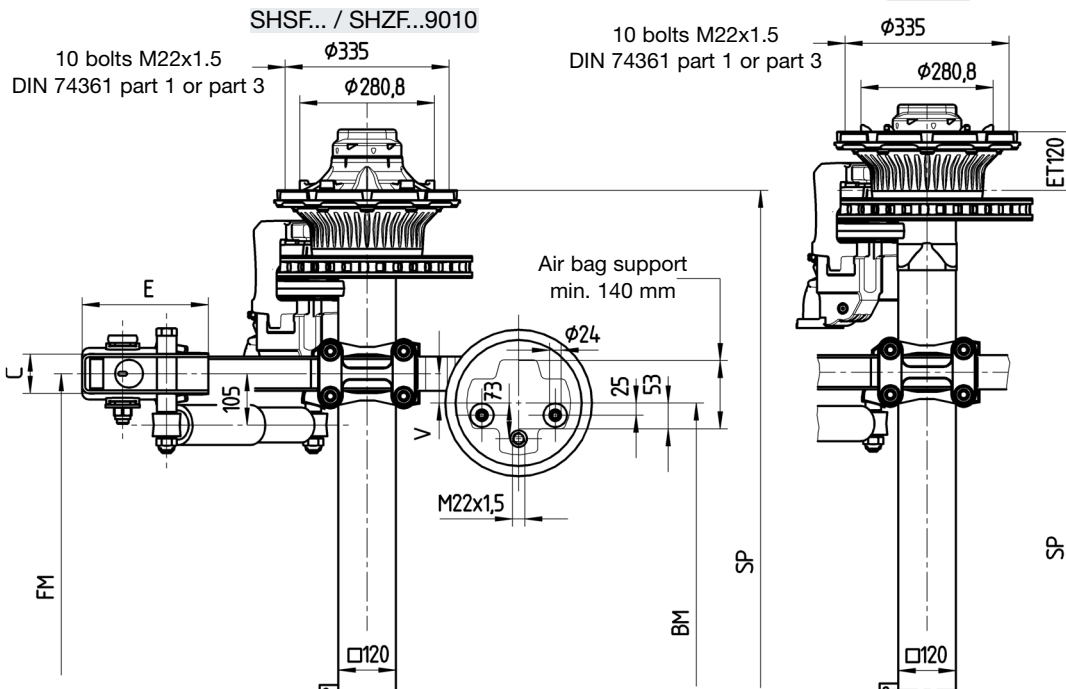
DIRECTION OF TRAVEL



Line	Series	~ adjustable ride height FH					Total spring travel GF ¹⁾	Air bag	Shock absorber 02.37...	Hanger bracket				Shock absorber mount		
		for single axles	for axle units	min. FH with axle raised	Empty without air	Loaded without air				ST	C	E	G	D	F	
2)	1	ALO	390-430	400-430	430	330	315	190	30K	..22.83.00	184	86	240	83	70	35
	2	ALO	420-470	430-470	460	360	345	190	30K	..22.83.00	268	80	258	83	90	35
	3	ALO	450-510	460-510	490	390	375	220	30	..22.88.00	268	80	258	83	90	35

¹⁾ Lifting heights acc. to TD-1242.0

²⁾ Only suitable for semitrailers

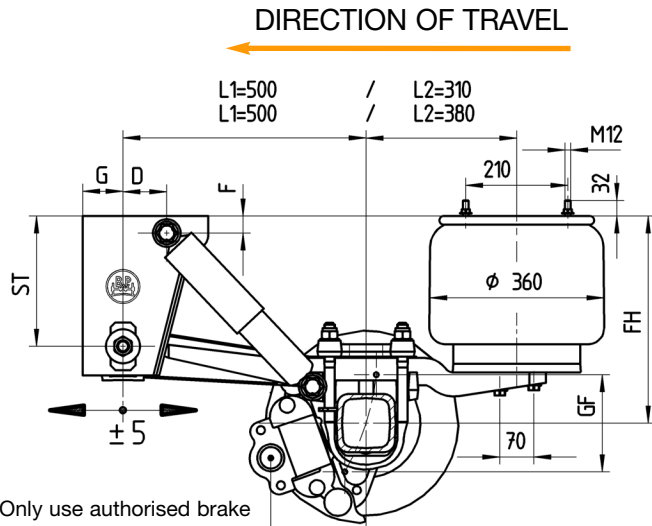


Axle type	Track SP	Spring centre FM	Air bag centre BM		Tyres recommended
			V=20	V=60	
SHSF..9010	2010	1200	1160	1080	385/65 R22.5 385/55 R22.5
SHSF..9010	2040	1200	1160	1080	
SHSF..9010	2040	1300	1260	1180	
SHSF..9010	2095	1300	1260	1180	
SHSF..9010	2140	1400	1360	1280	
SHBF..9010	2000	1200	1160	1080	
SHBF..9010	2040	1200	1160	1080	
SHBF..9010	2040	1300	1260	1180	
SHBF..9010	2095	1300	1260	1180	
SHBF..9010	2140	1400	1360	1280	
SHZF..9010	1820	900	860	780	275/70 R22.5
SHZF..9010	1880	980	---	860	
SHZF..9010	1920	980	940	860	

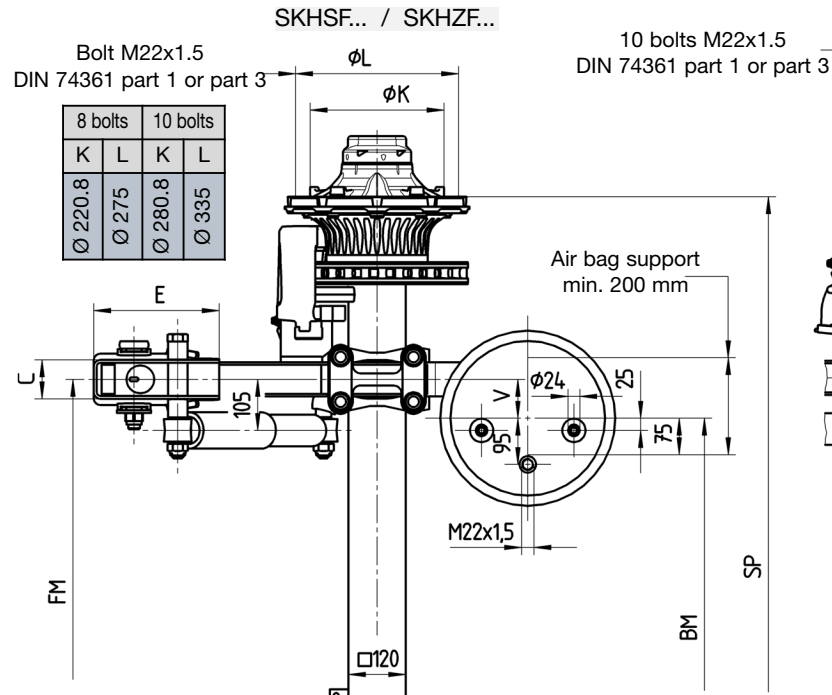
Max. inclination angle of the semitrailer under full load and lowest adjustable ride height ±1°

With trailing arm L1=500 / L2=310, bag pressures acc. to TE-1188.0 sheet 18
With trailing arm L1=500 / L2=380, bag pressures acc. to TE-1188.0 sheet 15

The hanger brackets, air bag supports and the frame must be reinforced so that the forces applied can be absorbed. See the current BPW installation instructions.



Only use authorised brake cylinders with internal seal max. Ø 191 mm



Line	Series	~ adjustable ride height FH					Total spring travel GF ¹⁾	Air bag	Shock absorber 02.37...	Hanger bracket				Shock absorber mount		
		for single axles	for axle units	min. FH with axle raised	Empty without air	Loaded without air				ST	C	E	G	D	F	
2)	1	ALO	390-430	400-430	430	330	315	190	36K	..22.83.00	184	86	240	83	70	35
	2	ALO	420-470	430-470	460	360	345	190	36K	..22.83.00	268	80	258	83	90	35
	3	ALO	450-510	460-510	490	390	375	220	36	..22.88.00	268	80	258	83	90	35

1) Lifting heights acc. to TD-1242.0

2) Only suitable for semitrailers

3) The load rating of the tyre mentioned in the drawing is in no relation to the axle load capacity.

4) Note the maximum total width.

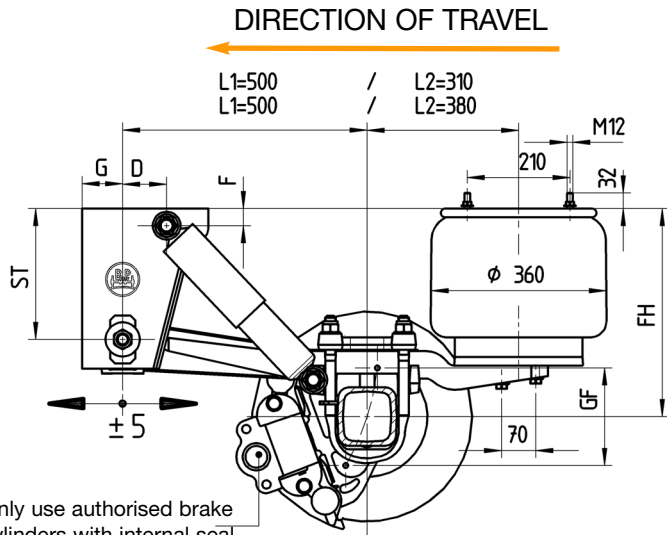
Axle type	Track SP with axle type		Spring centre FM	Air bag centre BM V=80	Tyres recommended	
	..9010	..9008			10 bolts	8 bolts
SKHSF..9010/9008	2000	2005	1200	1040	385/65 R22.5 385/55 R22.5	385/65 R19.5 ³⁾ 435/50 R19.5 ⁴⁾ 445/45 R19.5 ⁴⁾
SKHSF..9010/9008	2040	2045	1200	1040		
SKHSF..9010/9008	2040	2045	1300	1140		
SKHSF..9010/9008	2095	2100	1300	1140		
SKHSF..9010/9008	2140	2145	1400	1240	385/65 R22.5 385/55 R22.5	--
SKHBF..9010	2000	--	1200	1040		
SKHBF..9010	2040	--	1200	1040		
SKHBF..9010	2040	--	1300	1140		
SKHBF..9010	2095	--	1300	1140	385/65 R19.5 ³⁾ 435/50 R19.5 ⁴⁾ 445/45 R19.5 ⁴⁾	--
SKHBF..9010	2140	--	1400	1240		
SKHZF..9010/9008	1820	1825	900	740	275/70 R22.5	265/70 R19.5
SKHZF..9010/9008	1880	1885	980	820		
SKHZF..9010/9008	1920	1925	980	820		

Max. inclination angle of the semitrailer under full load and lowest adjustable ride height ±1°

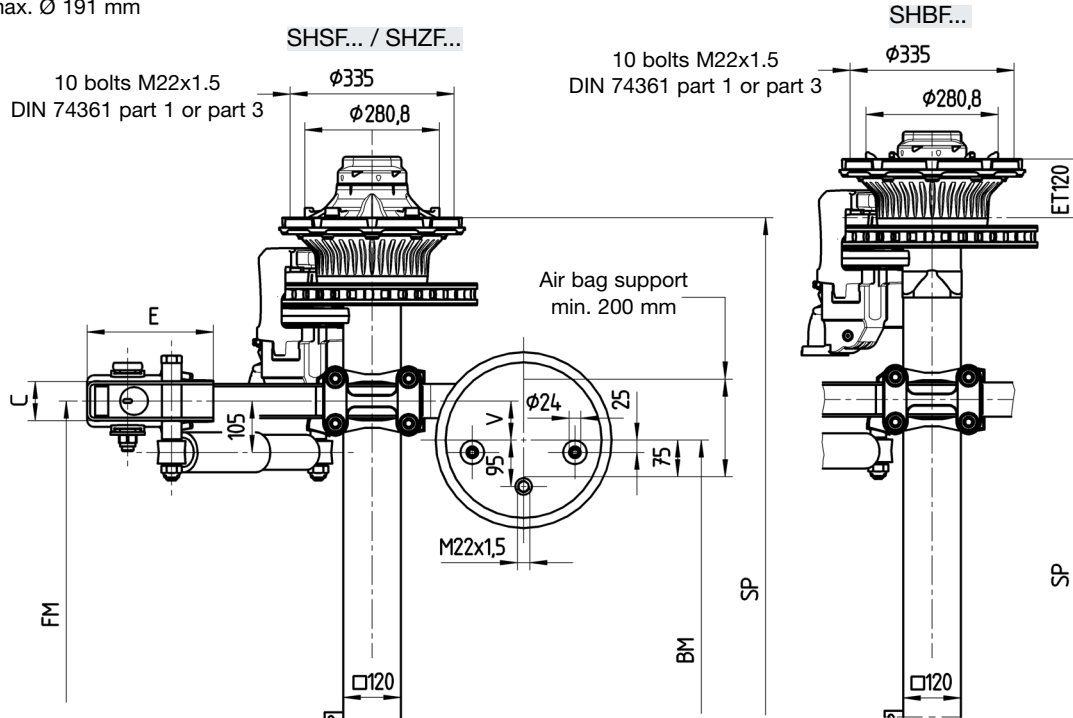
With trailing arm L1=500 / L2=310, bag pressures acc. to TE-1188.0 sheet 18

With trailing arm L1=500 / L2=380, bag pressures acc. to TE-1188.0 sheet 15

The hanger brackets, air bag supports and the frame must be reinforced so that the forces applied can be absorbed. See the current BPW installation instructions.



Only use authorised brake cylinders with internal seal max. Ø 191 mm



Line	Series	≈ adjustable ride height FH					Total spring travel (GF ¹⁾	Air bag	Shock absorber 02.37...	Hanger bracket				Shock absorber mount	
		for single axles	for axle units	min. FH with axle raised	Empty without air	Loaded without air				ST	C	E	G	D	F
1	ALO	390-430	400-430	430	330	315	190	36K	..22.83.00	184	86	240	83	70	35
2	ALO	420-470	430-470	460	360	345	190	36K	..22.83.00	268	80	258	83	90	35
3	ALO	450-510	460-510	490	390	375	220	36	..22.88.00	268	80	258	83	90	35

¹⁾ Lifting heights acc. to TD-1242.0

²⁾ Only suitable for semitrailers

Axle type	Track SP	Spring centre FM	Air bag centre BM V=80	Tyres recommended
SHSF..9010	2010	1200	1040	385/65 R22.5
SHSF..9010	2040	1200	1040	
SHSF..9010	2040	1300	1140	
SHSF..9010	2095	1300	1140	
SHSF..9010	2140	1400	1240	
SHBF..9010	2000	1200	1040	
SHBF..9010	2040	1200	1040	
SHBF..9010	2040	1300	1140	
SHBF..9010	2095	1300	1140	
SHBF..9010	2140	1400	1240	275/70 R22.5
SHZF..9010	1820	900	740	
SHZF..9010	1880	980	820	
SHZF..9010	1920	980	820	

Max. inclination angle of the semitrailer under full load and lowest adjustable ride height ±1°

With trailing arm L1=500 / L2=310, bag pressures acc. to TE-1188.0 sheet 5
With trailing arm L1=500 / L2=380, bag pressures acc. to TE-1188.0 sheet 11

The hanger brackets, air bag supports and the frame must be reinforced so that the forces applied can be absorbed. See the current BPW installation instructions.

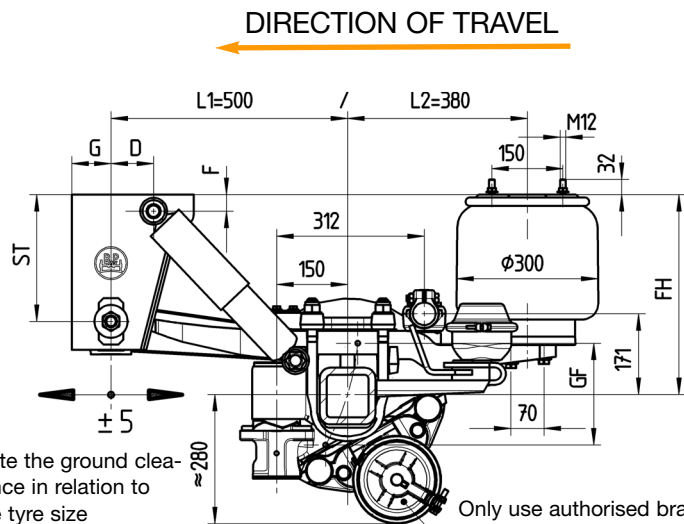
Airlight II

Self-steering axles with disc brake TSB 3709

Ride height 430-510 mm
for semitrailer

AL II-TSB.0

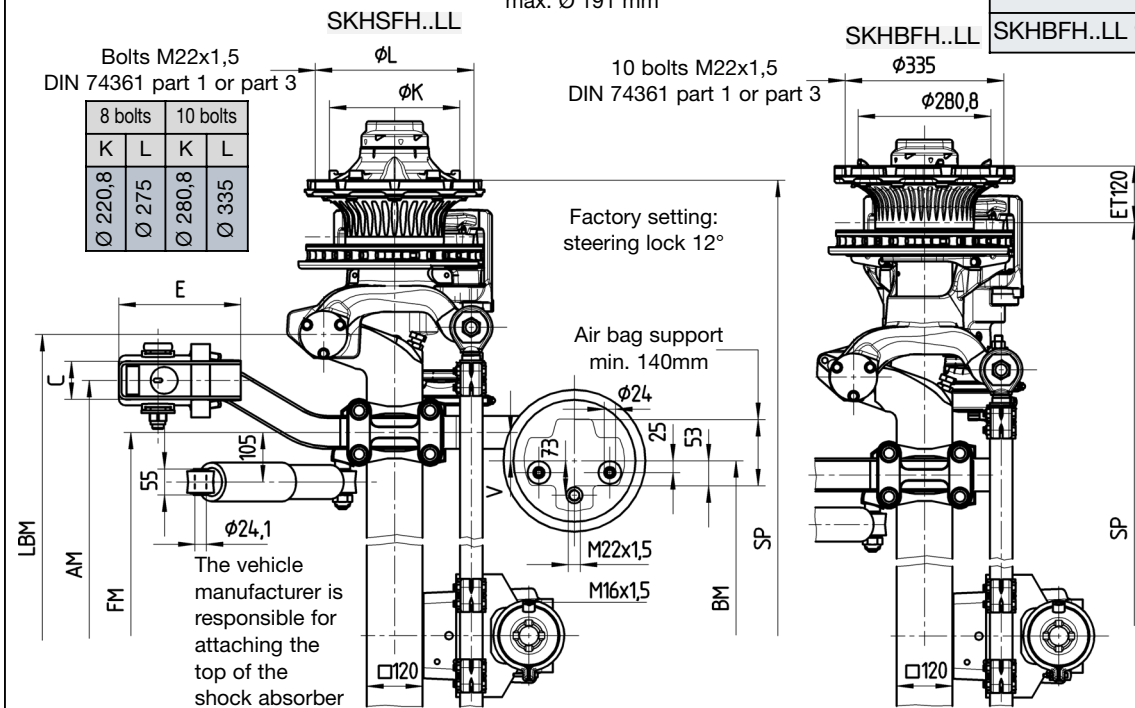
Sheet No. 3



Only use authorised brake cylinders with internal seal max. \varnothing 191 mm

Line	Series	≈ adjustable ride height FH				Total spring travel (GF ¹⁾	Air bag	Shock absorber 02.37...	Hanger bracket				Shock absorber mount	
		for axle units	min. FH with axle raised	Empty without air	Loaded without air				ST	C	E	G	D	F
2	ALOLL	430-470	460	360	345	190	30K	..22.83.00	268	80	258	83	90	35
3	ALOLL	460-510	490	390	375	220	30	..22.88.00	268	80	258	83	90	35

Axle type	Track SP / axle type		Spring centre FM	Support centre AM	Steering pin centre LBM	Air bag centre BM		Tyres recommended	
	..9010	..9008				V=20	V=60	10 bolts	8 bolts
SKHSFH..LL 9010/9008	2040	2045	980	1200	1395	940	860	385/65 R22,5 385/55 R22,5	385/65 R19,5 ²⁾
SKHSFH..LL 9010/9008	2095	2100	1080	1300	1450	1040	960		
SKHSFH..LL 9010/9008	2140	2145	1080	1300	1495	1040	960		
SKHBFH..LL 9010	2040	--	980	1200	1395	940	860	385/65 R22,5 385/55 R22,5	--
SKHBFH..LL 9010	2040	--	1080	1300	1395	1040	960		
SKHBFH..LL 9010	2095	--	1080	1300	1450	1040	960		
SKHBFH..LL 9010	2140	--	1080	1300	1495	1040	960		



- 1) Lifting heights acc. to TD-1242.0,
- 2) The load rating of the tyre mentioned in the drawing is in no relation to the axle load capacity.
It is dependent on the information from the tyre manufacturer.

Max. inclination angle of the semitrailer under full load and lowest adjustable ride height $\pm 1^\circ$
With trailing arm L1=500 / L2=380, bag pressures acc. to TE-1188.0 sheet 15
The hanger brackets, air bag supports and the frame must be reinforced so that the forces applied can be absorbed. See the current BPW installation instructions.

With axle ratio - rigid to steering axle of 1:1, when fitted with a lifting axle and when using central lubrication systems, the steering axle must be equipped with a steering damper.

Leaf spring		Draglink position	Steering damper set	Drawing
L1	L2			
500	380	312 / 171	05.872.00.56.0	04.00.095155

Airlight II

Self-steering axles with disc brake TSB 4309

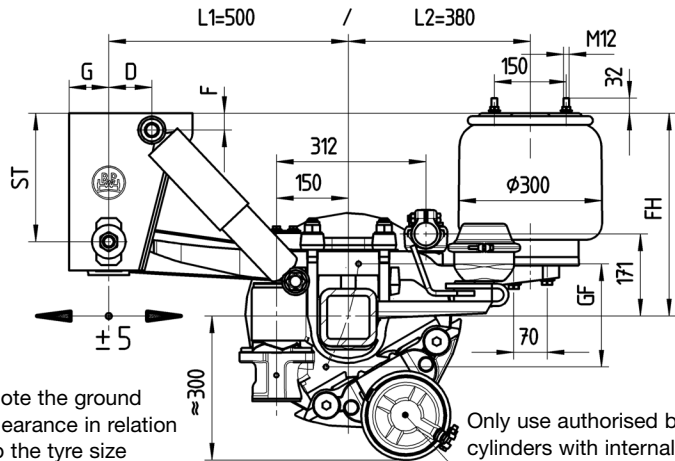
Ride height 430-510 mm
for semitrailer

AL II-TSB.0

Sheet No. 3a

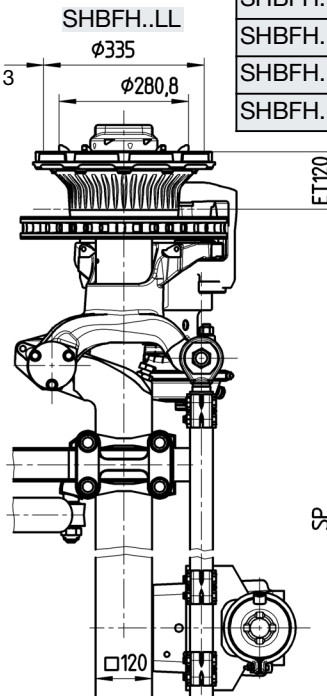
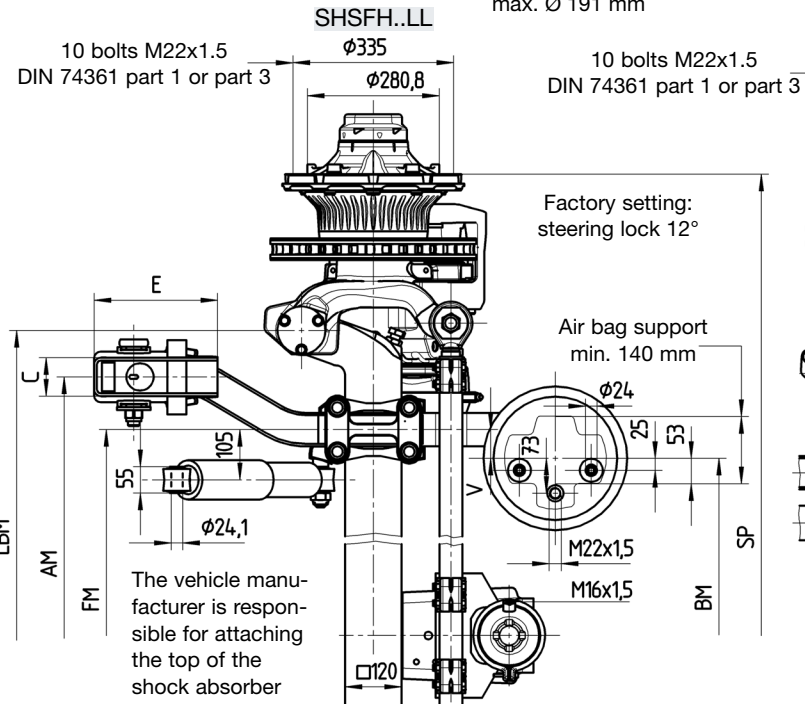


DIRECTION OF TRAVEL



Note the ground clearance in relation to the tyre size

Only use authorised brake cylinders with internal seal max. Ø 191 mm



Line	Series	≈ adjustable ride height FH				Total spring travel (GF 1)	Air bag	Shock absorber 02.37...	Hanger bracket				Shock absorber mount	
		for axle units	min. FH with axle raised	Empty without air	Loaded without air				ST	C	E	G	D	F
2	ALOLL	430-470	460	360	345	190	30K	..22.83.00	268	80	258	83	90	35
3	ALOLL	460-510	490	390	375	220	30	..22.88.00	268	80	258	83	90	35

1) Lifting heights acc. to TD-1242.0

Axle type	Track SP	Spring centre FM	Support centre AM	Steering pin centre LBM	Air bag centre BM		Tyres recommended
					V=20	V=60	
SHSFH..LL 9010	2040	980	1200	1395	940	860	385/65 R22.5 385/55 R22.5
SHSFH..LL 9010	2040	1080	1300	1395	1040	960	
SHSFH..LL 9010	2095	1080	1300	1450	1040	960	
SHSFH..LL 9010	2140	1080	1300	1495	1040	960	
SHBFH..LL 9010	2040	980	1200	1395	940	860	
SHBFH..LL 9010	2040	1080	1300	1395	1040	960	
SHBFH..LL 9010	2095	1080	1300	1450	1040	960	
SHBFH..LL 9010	2140	1080	1300	1495	1040	960	

Max. inclination angle of the semitrailer under full load and lowest adjustable ride height ±1°
With trailing arm L1=500 / L2=380, bag pressures acc. to TE-1188.0 sheet 15

The hanger brackets, air bag supports and the frame pin must be reinforced so that the forces applied can be absorbed. See the current BPW installation instructions.

With axle ratio - rigid to steering axle of 1:1, when fitted with a lifting axle and when using central lubrication systems, the steering axle must be equipped with a steering damper.

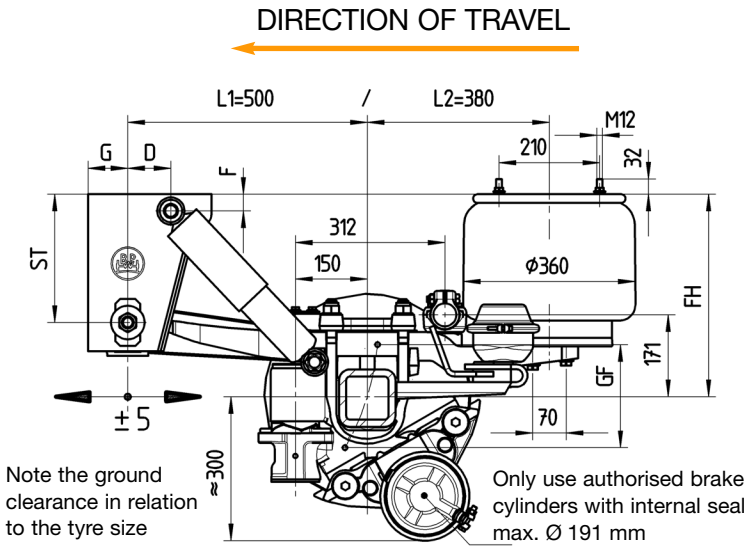
Leaf spring		Draglink position	Steering damper set	Drawing
L1	L2			
500	380	312 / 171	05.872.00.56.0	04.00.095155

Airlight II

Self-steering axles with disc brake TSB 4309

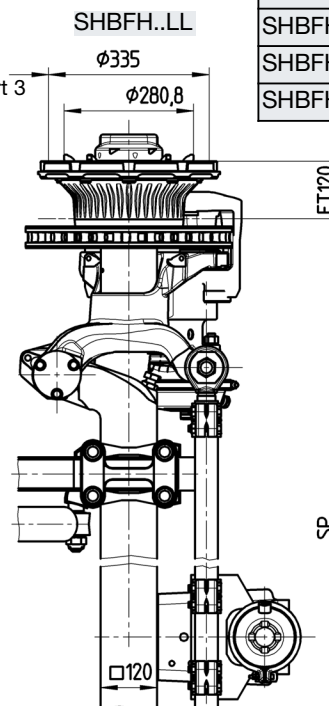
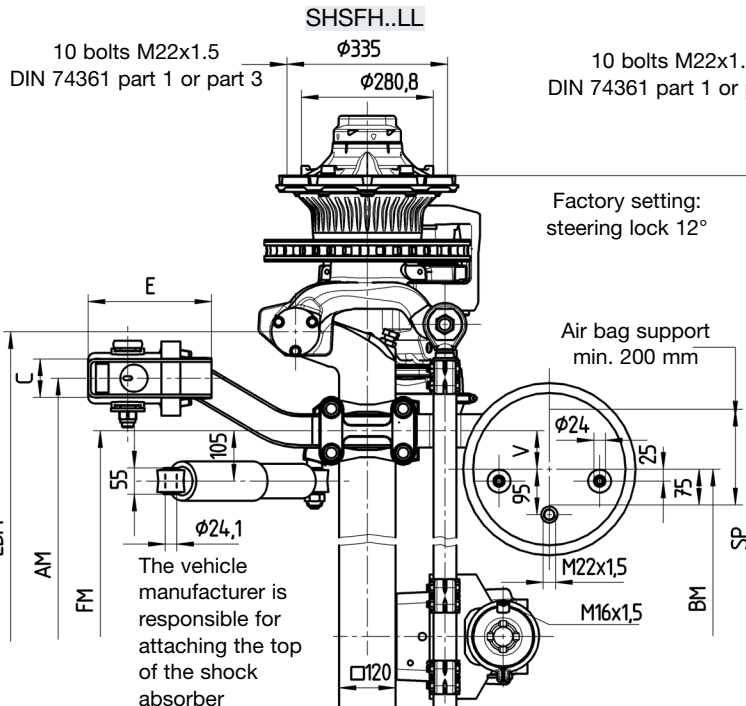
Ride height 430-510 mm
for semitrailer

AL II-TSB.0
Sheet No. 4a



Note the ground clearance in relation to the tyre size

Only use authorised brake cylinders with internal seal max. Ø 191 mm



Line	Series	≈ adjustable ride height FH				Total spring travel (GF ¹⁾	Air bag	Shock absorber 02.37...	Hanger bracket				Shock absorber mount	
		for axle units	min. FH with axle raised	Empty without air	Loaded without air				ST	C	E	G	D	F
2	ALOLL	430-470	460	360	345	190	36K	..22.83.00	268	80	258	83	90	35
3	ALOLL	460-510	490	390	375	220	36	..22.88.00	268	80	258	83	90	35

¹⁾ Lifting heights acc. to TD-1242.0

Axle type	Track SP	Spring centre FM	Support centre AM	Steering pin centre LBM	Air bag centre BM	Tyres recommended
					V=80	
SHSFH..LL 9010	2040	980	1200	1395	820	385/65 R22.5 385/55 R22.5
SHSFH..LL 9010	2040	1080	1300	1395	920	
SHSFH..LL 9010	2095	1080	1300	1450	920	
SHSFH..LL 9010	2140	1080	1300	1495	920	
SHBFH..LL 9010	2040	980	1200	1395	820	
SHBFH..LL 9010	2040	1080	1300	1395	920	
SHBFH..LL 9010	2095	1080	1300	1450	920	
SHBFH..LL 9010	2140	1080	1300	1495	920	

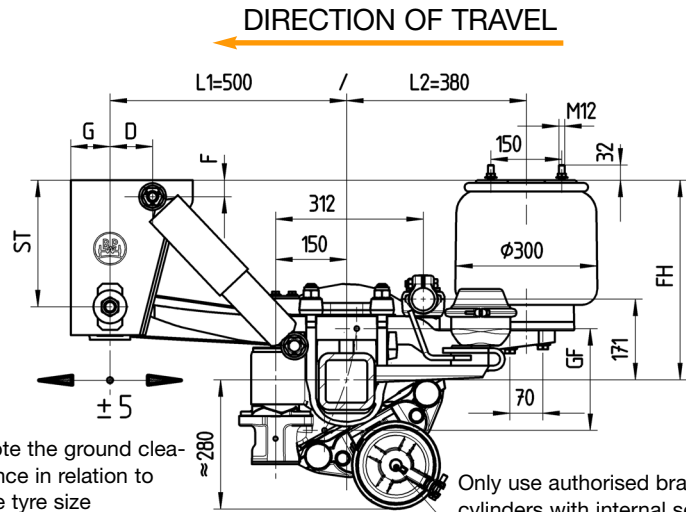
Max. inclination angle of the semitrailer under full load and lowest adjustable ride height ±1°

With trailing arm L1=500 / L2=380, bag pressures acc. to TE-1188.0 sheet 11

The hanger brackets, air bag supports and the frame must be reinforced so that the forces applied can be absorbed. See the current BPW installation instructions.

With axle ratio - rigid to steering axle of 1:1, when fitted with a lifting axle and when using central lubrication systems, the steering axle must be equipped with a steering damper.

Leaf spring		Draglink position	Steering damper set	Drawing
L1	L2			
500	380	312 / 171	05.872.00.56.0	04.00.095155

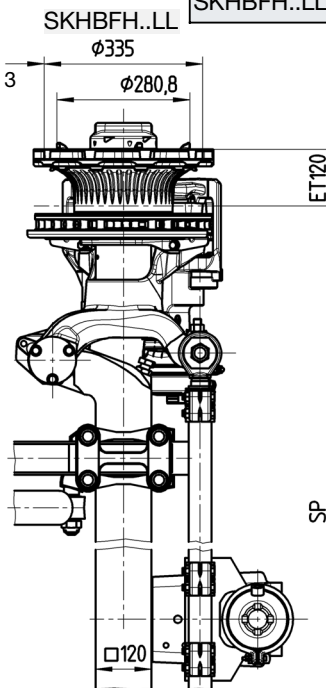
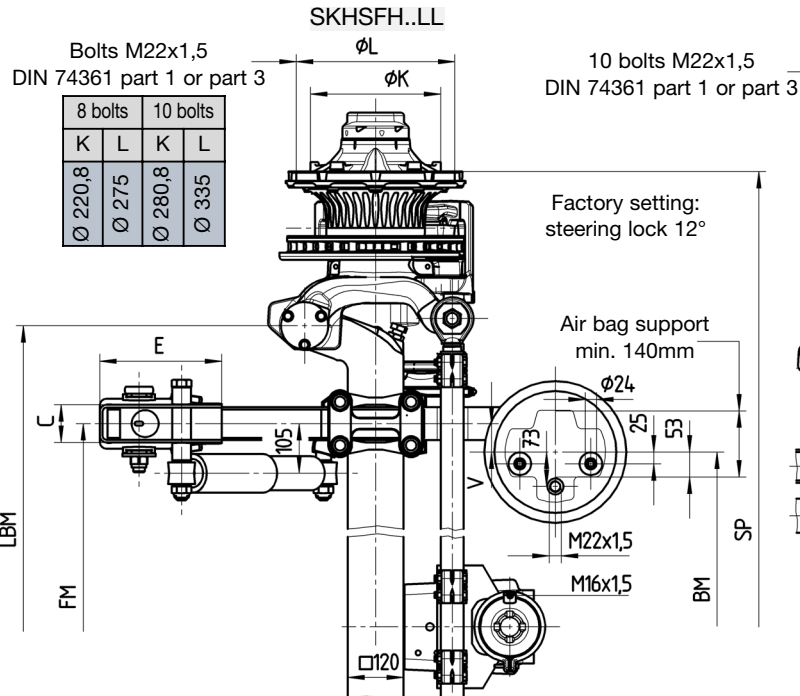


Note the ground clearance in relation to the tyre size

Only use authorised brake cylinders with internal seal max. Ø 191 mm

Line	Series	≈ adjustable ride height FH				Total spring travel (GF ¹⁾	Air bag	Shock absorber 02.37...	Hanger bracket				Shock absorber mount	
		for axle units	min. FH with axle raised	Empty without air	Loaded without air				ST	C	E	G	D	F
2	ALOLL	430-470	460	360	345	190	30K	..22.83.00	268	80	258	83	90	35
3	ALOLL	460-510	490	390	375	220	30	..22.88.00	268	80	258	83	90	35

Axle type	Track SP / Axle type		Spring centre FM	Steering pin centre LBM	Air bag centre BM		Tyres recommended	
	..9010	..9008			V=20	V=60	10 bolts	8 bolts
SKHSFH...LL 9010/9008	2040	2045	980	1395	940	860	385/65 R22,5 385/55 R22,5	385/65 R19,5 ²⁾
SKHSFH...LL 9010/9008	2095	2100	1080	1450	1040	960		
SKHSFH...LL 9010/9008	2140	2145	1080	1495	1040	960		
SKHBFH...LL 9010	2040	--	980	1395	940	860	385/65 R22,5 385/55 R22,5 385/65 R19,5 ²⁾	--
SKHBFH...LL 9010	2040	--	1080	1395	1040	960		
SKHBFH...LL 9010	2095	--	1080	1450	1040	960		
SKHBFH...LL 9010	2140	--	1080	1495	1040	960		



¹⁾ Lifting heights acc. to TD-1242.0

²⁾ The load rating of the tyre mentioned in the drawing is in no relation to the axle load capacity.

It is dependent on the information from the tyre manufacturer.

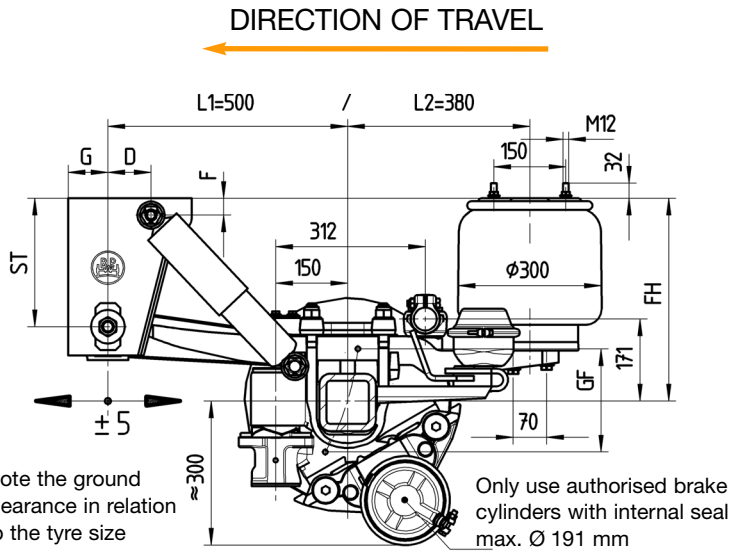
Max. inclination angle of the semitrailer under full load and lowest adjustable ride height ±1°

With trailing arm L1=500 / L2=380, bag pressures acc. to TE-1188.0 sheet 15

The hanger brackets, air bag supports and the frame must be reinforced so that the forces applied can be absorbed. See the current BPW installation instructions.

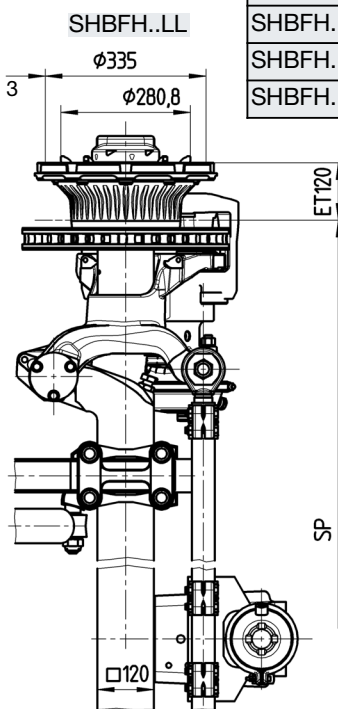
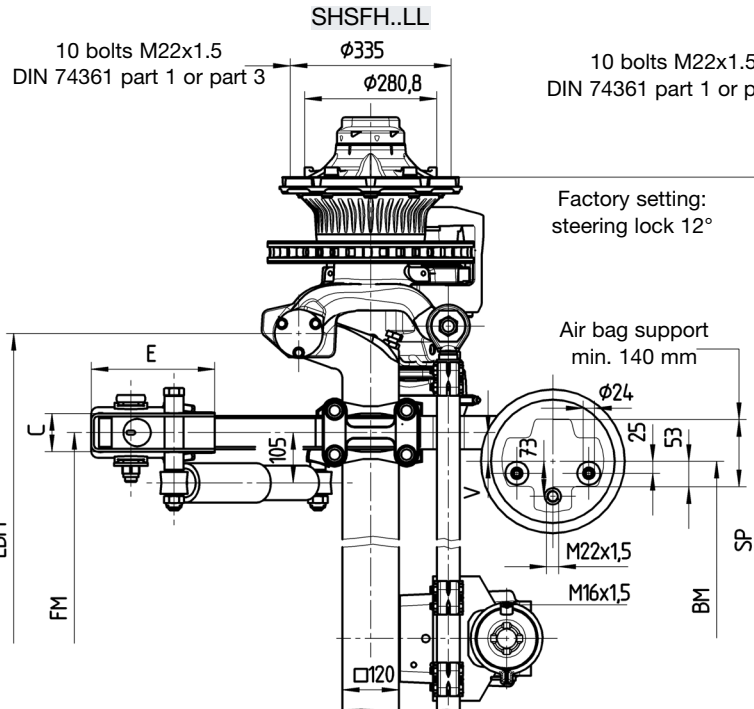
With axle ratio - rigid to steering axle of 1:1, when fitted with a lifting axle and when using central lubrication systems, the steering axle must be equipped with a steering damper.

Leaf spring		Draglink position	Steering damper set	Drawing
L1	L2			
500	380	312 / 171	05.872.00.56.0	04.00.095155



Line	Series	~ adjustable ride height FH				Total spring travel (GF 1)	Air bag	Shock absorber 02.37...	Hanger bracket				Shock absorber mount	
		for axle units	min. FH with axle raised	Empty without air	Loaded without air				ST	C	E	G	D	F
2	ALOLL	430-470	460	360	345	190	30K	..22.83.00	268	80	258	83	90	35
3	ALOLL	460-510	490	390	375	220	30	..22.88.00	268	80	258	83	90	35

1) Lifting heights acc. to TD-1242.0



Axle type	Track SP	Spring centre FM	Steering pin centre BM	Air bag centre BM		Tyres recommended
				V=20	V=60	
SHSFH..LL 9010	2040	980	1395	940	860	385/65 R22.5 385/55 R22.5
SHSFH..LL 9010	2040	1080	1395	1040	960	
SHSFH..LL 9010	2095	1080	1450	1040	960	
SHSFH..LL 9010	2140	1080	1495	1040	960	
SHBFH..LL 9010	2040	980	1395	940	860	
SHBFH..LL 9010	2040	1080	1395	1040	960	
SHBFH..LL 9010	2095	1080	1450	1040	960	
SHBFH..LL 9010	2140	1080	1495	1040	960	

Max. inclination angle of the semitrailer under full load and lowest adjustable ride height $\pm 1^\circ$

With trailing arm L1=500 / L2=380, bag pressures acc. to TE-1188.0 sheet 15

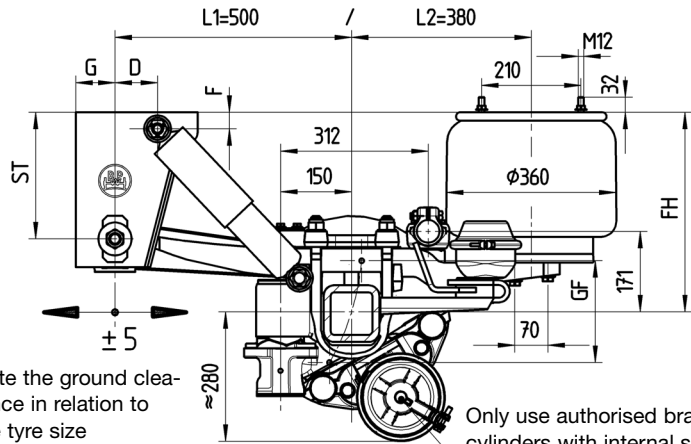
The hanger brackets, air bag supports and the frame must be reinforced so that the forces applied can be absorbed. See the current BPW installation instructions.

With axle ratio - rigid to steering axle of 1:1, when fitted with a lifting axle and when using central lubrication systems, the steering axle must be equipped with a steering damper.

Leaf spring		Draglink position	Steering damper set	Drawing
L1	L2			
500	380	312 / 171	05.872.00.56.0	04.00.095155



DIRECTION OF TRAVEL

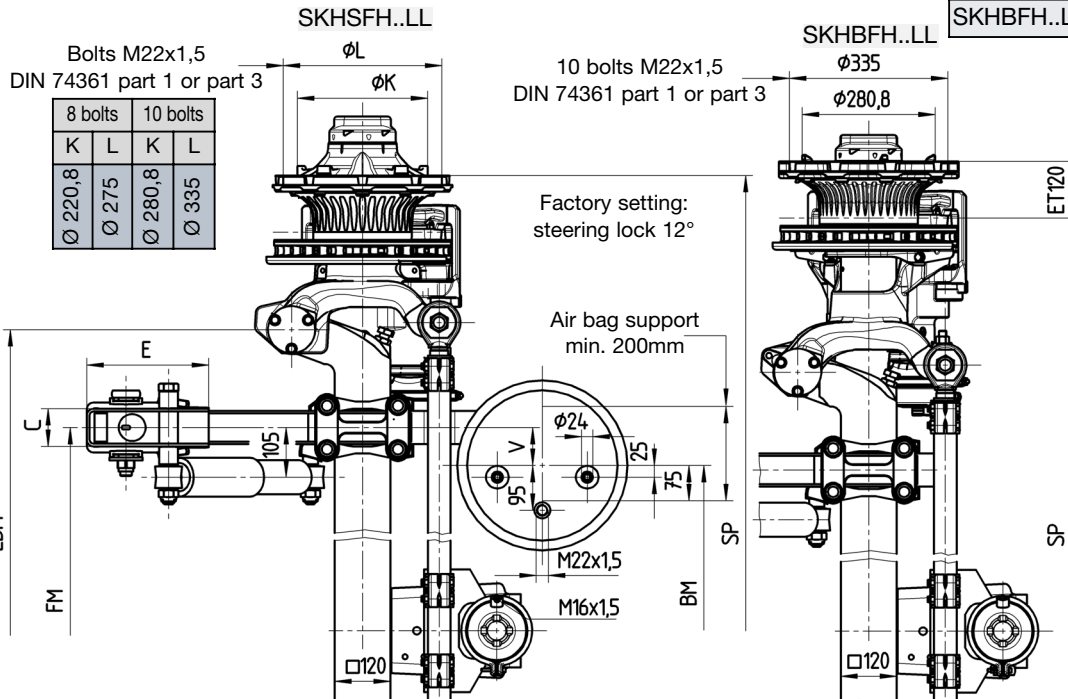


Note the ground clearance in relation to the tyre size

Only use authorised brake cylinders with internal seal max. Ø 191 mm

Line	Series	≈ adjustable ride height FH				Total spring travel GF ¹⁾	Air bag	Shock absorber 02.37...	Hanger bracket				Shock absorber mount	
		for axle units	min. FH with axle raised	Empty without air	Loaded without air				ST	C	E	G	D	F
2	ALOLL	430-470	460	360	345	190	36K	..22.83.00	268	80	258	83	90	35
3	ALOLL	460-510	490	390	375	220	36	..22.88.00	268	80	258	83	90	35

Axle type	Track SP / axle type		Spring centre FM	Steering pin centre LBM	Air bag centre BM V=80	Tyres recommended	
	..9010	..9008				10 bolts	8 bolts
SKHSFH..LL 9010/9008	2040	2045	980	1395	820	385/65 R22,5 385/55 R22,5	385/65 R19,5 ²⁾
SKHSFH..LL 9010/9008	2095	2100	1080	1450	920		
SKHSFH..LL 9010/9008	2140	2145	1080	1495	920		
SKHBFH..LL 9010	2040	--	980	1395	820	385/65 R22,5 385/55 R22,5	--
SKHBFH..LL 9010	2040	--	1080	1395	920		
SKHBFH..LL 9010	2095	--	1080	1450	920		
SKHBFH..LL 9010	2140	--	1080	1495	920	385/65 R19,5 ²⁾	



- 1) Lifting heights acc. to TD-1242.0
- 2) The load rating of the tyre mentioned in the drawing is in no relation to the axle load capacity. It is dependent on the information from the tyre manufacturer.

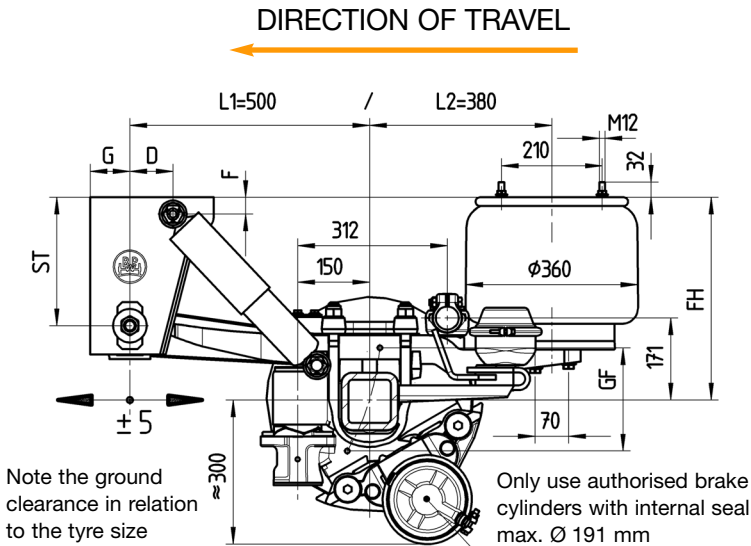
Max. inclination angle of the semitrailer under full load and lowest adjustable ride height ±1°

With trailing arm L1=500 / L2=380, bag pressures acc. to TE-1188.0 sheet 11

The hanger brackets, air bag supports and the frame must be reinforced so that the forces applied can be absorbed. See the current BPW installation instructions.

With axle ratio - rigid to steering axle of 1:1, when fitted with a lifting axle and when using central lubrication systems, the steering axle must be equipped with a steering damper.

Leaf spring		Draglink position	Steering damper set	Drawing
L1	L2			
500	380	312 / 171	05.872.00.56.0	04.00.095155



SHSFH..LL

10 bolts M22x1.5
DIN 74361 part 1 or part 3

Ø335

Ø280,8

10 bolts M22x1.5
DIN 74361 part 1 or part 3

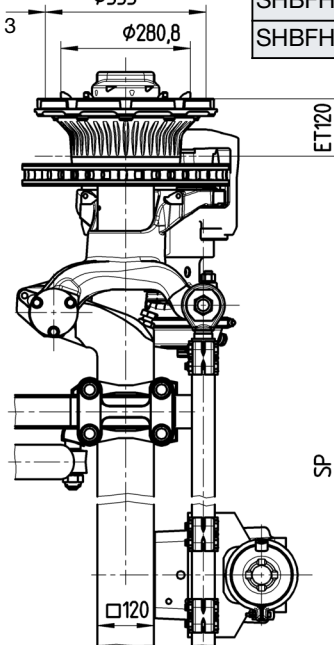
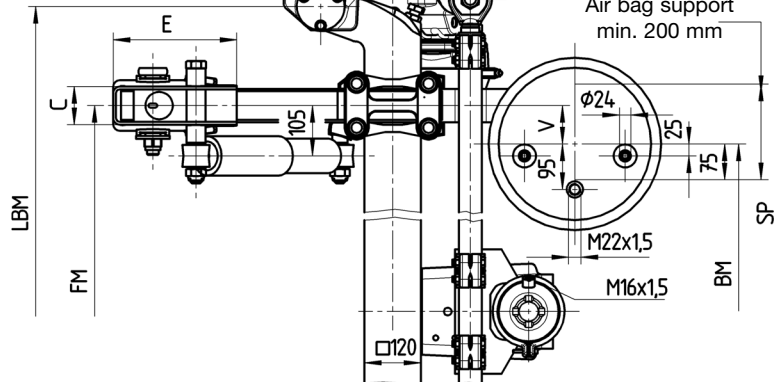
SHBFH..LL

Ø335

Ø280,8

Factory setting:
steering lock 12°

Air bag support
min. 200 mm



Line	Series	≈ adjustable ride height FH				Total spring travel GF ¹⁾	Air bag	Shock absorber 02.37...	Hanger bracket				Shock absorber mount	
		for axle units	min. FH with axle raised	Empty without air	Loaded without air				ST	C	E	G	D	F
2	ALOLL	430-470	460	360	345	190	36K	..22.83.00	268	80	258	83	90	35
3	ALOLL	460-510	490	390	375	220	36	..22.88.00	268	80	258	83	90	35

¹⁾ Lifting heights acc. to TD-1242.0

Axle type	Track SP	Spring centre FM	Steering pin centre BM	Air bag centre BM	Tyres recommended
				V=80	
SHSFH..LL 9010	2040	980	1395	820	385/65 R22.5 385/55 R22.5
SHSFH..LL 9010	2040	1080	1395	920	
SHSFH..LL 9010	2095	1080	1450	920	
SHSFH..LL 9010	2140	1080	1495	920	
SHBFH..LL 9010	2040	980	1395	820	
SHBFH..LL 9010	2040	1080	1395	920	
SHBFH..LL 9010	2095	1080	1450	920	
SHBFH..LL 9010	2140	1080	1495	920	

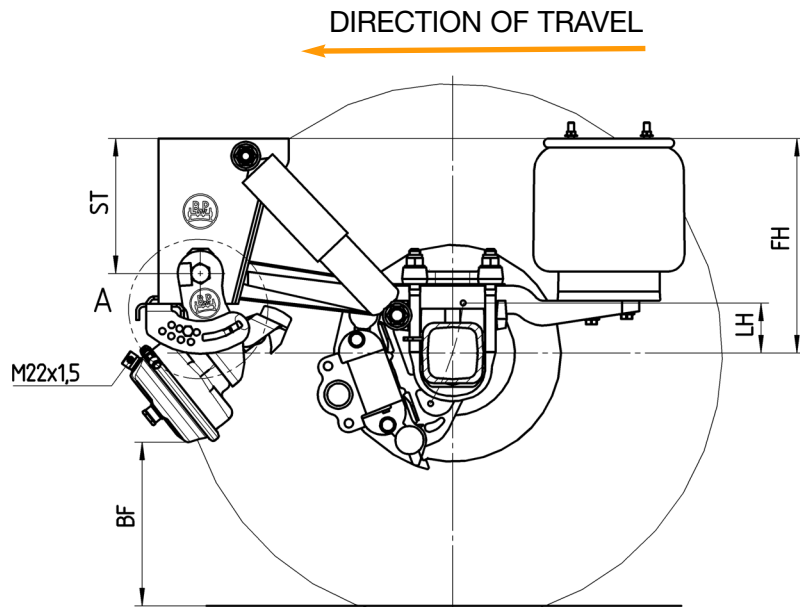
Max. inclination angle of the semitrailer under full load and lowest adjustable ride height ±1°

With trailing arm L1=500 / L2=380, bag pressures acc. to TE-1188.0 sheet 11

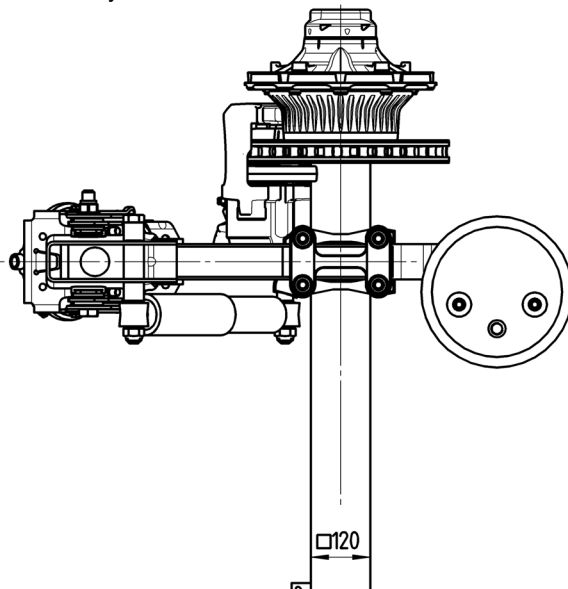
The hanger brackets, air bag supports and the frame must be reinforced so that the forces applied can be absorbed. See the current BPW installation instructions.

With axle ratio - rigid to steering axle of 1:1, when fitted with a lifting axle and when using central lubrication systems, the steering axle must be equipped with a steering damper.

Leaf spring		Draglink position	Steering damper set	Drawing
L1	L2			
500	380	312 / 171	05.872.00.56.0	04.00.095155



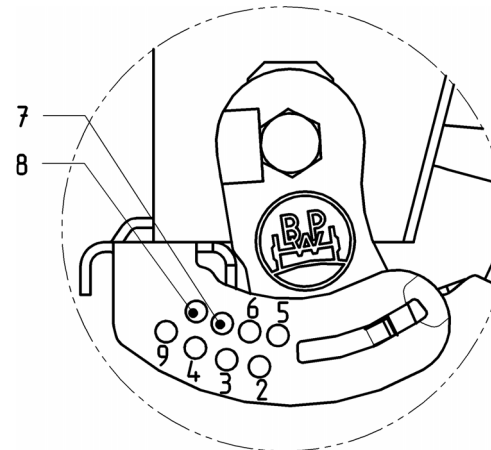
* Note the ground clearance in relation to the tyre size!



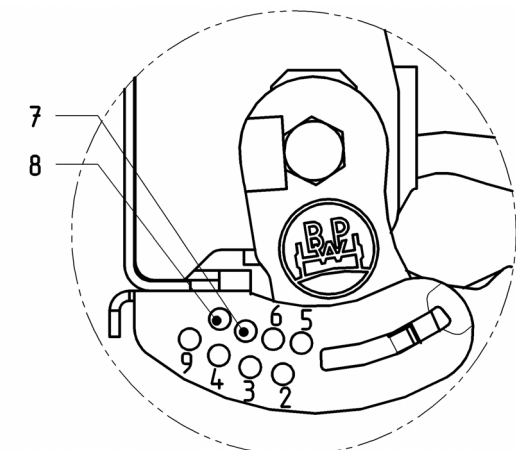
Suspension to drawing ALII-TSB.0 Sheet No.	≈ adjustable ride height FH		min. Lifting height LH	Support height ST	Ground clearance BF ¹⁾	Stop position in version
	for axle units	min. FH with axle raised				
Sheet 1, 1a Sheet 2, 2a	400-430	430	100	184	419	8
	430-470	460	100	268	358	7
	460-510	490	100	268	395	8

¹⁾ Ground clearance in relation to the set minimum ride height with the axle raised.
* Reifen: 385/65 R 22.5 ($r_{stat} = 496$)

Detail A
Support configuration



Detail A
Channel crossmember configuration



In the lifting and lowering version, the total spring travel must be limited by a shut-off valve.

Minimum air pressure for lifting the axle approx. 6 bar.

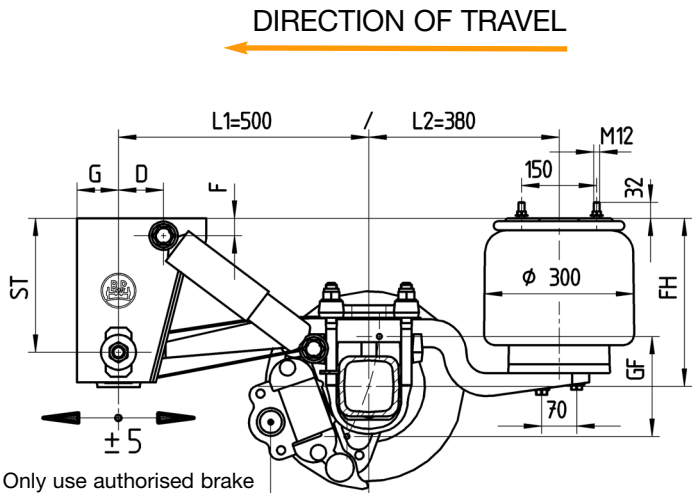
The hanger brackets, air bag supports and the frame must be reinforced so that the forces applied can be absorbed. See the current BPW installation instructions.

Airlight II

Air-spring axles with disc brake TSB 3709

Ride height 245-420 mm
for trailer and semitrailer

AL II-TSB.0
Sheet No. 8



Only use authorised brake cylinders with internal seal max. Ø 191 mm

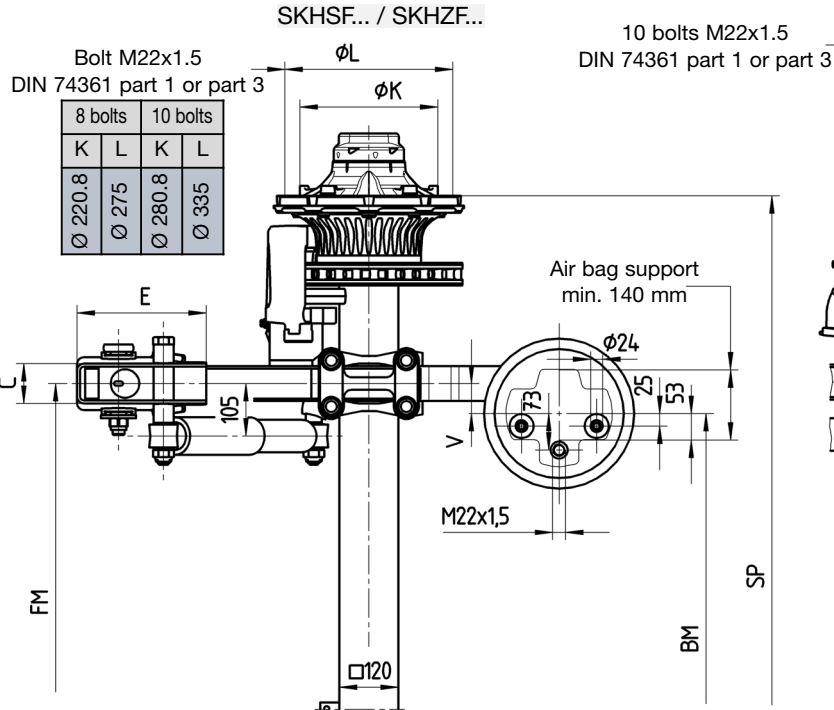
Line	Series	~ adjustable ride height FH					Total spring travel (GF ¹)	Air bag	Shock absorber 02.37...	Hanger bracket				Shock absorber mount		
		for single axles	for axle units	min. FH with axle raised	Empty without air	Loaded without air				ST	C	E	G	D	F	
2)	1	ALMT	245-290	255-290	285	185	170	190	30K	..22.89.00	184	86	240	83	70	35
2)	2	ALMT	270-310	280-310	310	210	195	220	30	..22.89.00	184	86	240	83	70	35
	3	ALMT	280-325	290-325	320	220	205	190	30K	..22.83.00	268	80	258	83	55	35
2)	4	ALM	300-340	310-340	340	240	225	190	30K	..22.83.00	184	86	240	83	70	35
	5	ALMT	305-360	315-360	345	245	230	220	30	..22.83.00	268	80	258	83	55	35
	6	ALM	340-390	350-390	380	280	265	190	30K	..22.83.00	268	80	258	83	90	35
	7	ALM	365-420	375-420	405	305	290	220	30	..22.83.00	268	80	258	83	90	35

¹) Lifting heights acc. to TD-1242.0

²) Only suitable for semitrailer

³) The load rating of the tyre mentioned in the drawing is in no relation to the axle load capacity. It is dependent on the information from the tyre manufacturer.

⁴) Note the maximum total width



Axle type	Track SP with axle type		Spring type FM	Air bag centre BM		Tyres recommended	
	..9010	..9008		V=20	V=60	10 bolts	8 bolts
SKHSF..9010/9008	2000	2005	1200	1160	1080	385/65 R22.5 385/55 R22.5	385/65 R19.5 ³⁾ 435/50 R19.5 ⁴⁾ 445/45 R19.5 ⁴⁾
SKHSF..9010/9008	2040	2045	1200	1160	1080		
SKHSF..9010/9008	2040	2045	1300	1260	1180		
SKHSF..9010/9008	2095	2100	1300	1260	1180		
SKHSF..9010/9008	2140	2145	1400	1360	1280		
SKHBF..9010	2000	--	1200	1160	1080	385/65 R22.5 385/55 R22.5	--
SKHBF..9010	2040	--	1200	1160	1080		
SKHBF..9010	2040	--	1300	1260	1180		
SKHBF..9010	2095	--	1300	1260	1180		
SKHBF..9010	2140	--	1400	1360	1280		
SKHZF..9010/9008	1820	1825	900	860	780	275/70 R22.5	265/70 R19.5
SKHZF..9010/9008	1880	1885	980	---	860		
SKHZF..9010/9008	1920	1925	980	940	860		

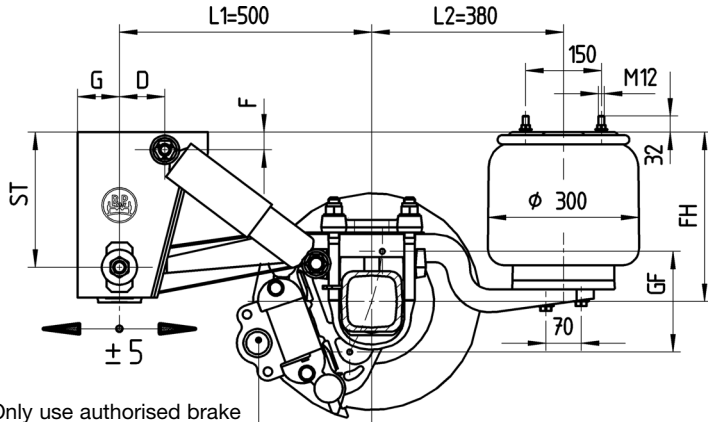
Max. inclination angle of the semitrailer under full load and lowest adjustable ride height 1°

With trailing arm L1=500 / L2=380, bag pressures acc. to TE-1188.0 sheet 15

The hanger brackets, air bag supports and the frame must be reinforced so that the forces applied can be absorbed. See the current BPW installation instructions.



DIRECTION OF TRAVEL

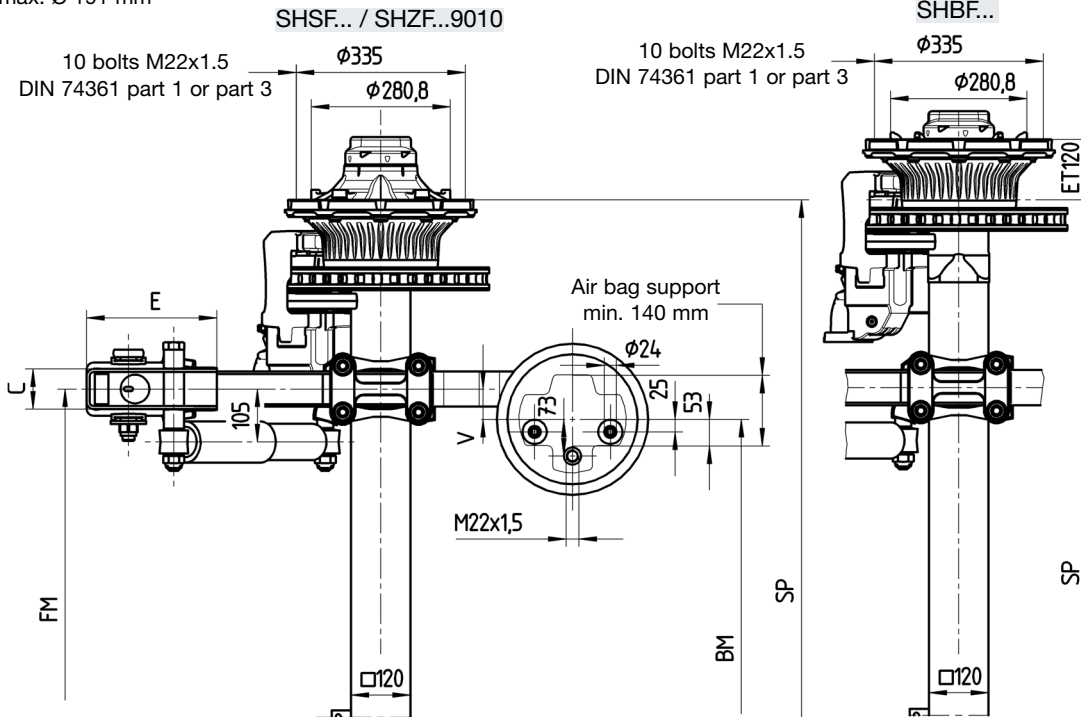


Only use authorised brake cylinders with internal seal max. Ø 191 mm

Line	Series	≈ adjustable ride height FH					Total spring travel (GF ¹)	Air bag	Shock absorber 02.37...	Hanger bracket				Shock absorber mount		
		for single axle	for axle units	min. FH with axle raised	Empty without air	Loaded without air				ST	C	E	G	D	F	
2)	1	ALMT	245-290	255-290	285	185	170	190	30K	..22.89.00	184	86	240	83	70	35
2)	2	ALMT	270-310	280-310	310	210	195	220	30	..22.89.00	184	86	240	83	70	35
	3	ALMT	280-325	290-325	320	220	205	190	30K	..22.83.00	268	80	258	83	55	35
2)	4	ALM	300-340	310-340	340	240	225	190	30K	..22.83.00	184	86	240	83	70	35
	5	ALMT	305-360	315-360	345	245	230	220	30	..22.83.00	268	80	258	83	55	35
	6	ALM	340-390	350-390	380	280	265	190	30K	..22.83.00	268	80	258	83	90	35
	7	ALM	365-420	375-420	405	305	290	220	30	..22.83.00	268	80	258	83	90	35

¹⁾ Lifting heights acc. to TD-1242.0,

²⁾ Only suitable for semitrailer



Axle type	Track SP	Spring centre FM	Air bag centre BM		Tyres recommended
			V=20	V=60	
SHSF..9010	2010	1200	1160	1080	385/65 R22.5
SHSF..9010	2040	1200	1160	1080	
SHSF..9010	2040	1300	1260	1180	
SHSF..9010	2095	1300	1260	1180	
SHSF..9010	2140	1400	1360	1280	
SHBF..9010	2000	1200	1160	1080	
SHBF..9010	2040	1200	1160	1080	
SHBF..9010	2040	1300	1260	1180	
SHBF..9010	2095	1300	1260	1180	
SHBF..9010	2140	1400	1360	1280	275/70 R22.5
SHZF..9010	1820	900	860	780	
SHZF..9010	1880	980	---	860	
SHZF..9010	1920	980	940	860	

Max. inclination angle of the semitrailer under full load and lowest adjustable ride height $\pm 1^\circ$

With trailing arm L1=500 / L2=380, bag pressures acc. to TE-1188.0 sheet 15

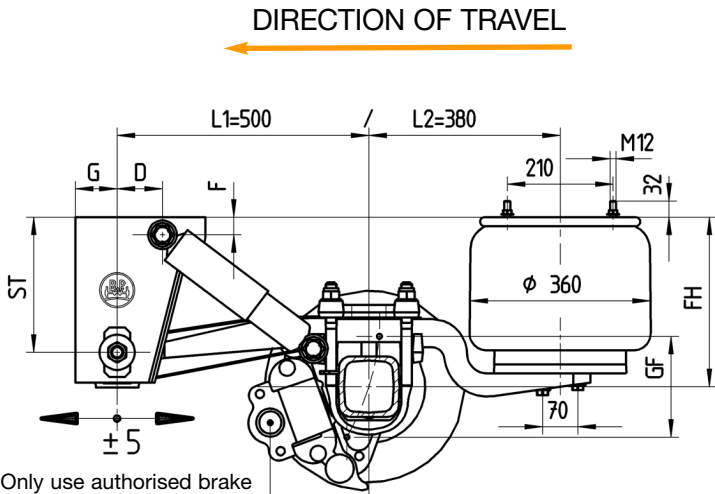
The hanger brackets, air bag supports and the frame must be reinforced so that the forces applied can be absorbed. See the current BPW installation instructions.

Airlight II

Air-spring axles with disc brake TSB 3709

Ride height 245-420 mm
for trailer and semitrailer

AL II-TSB.0
Sheet No. 9



Only use authorised brake cylinders with internal seal max. Ø 191 mm

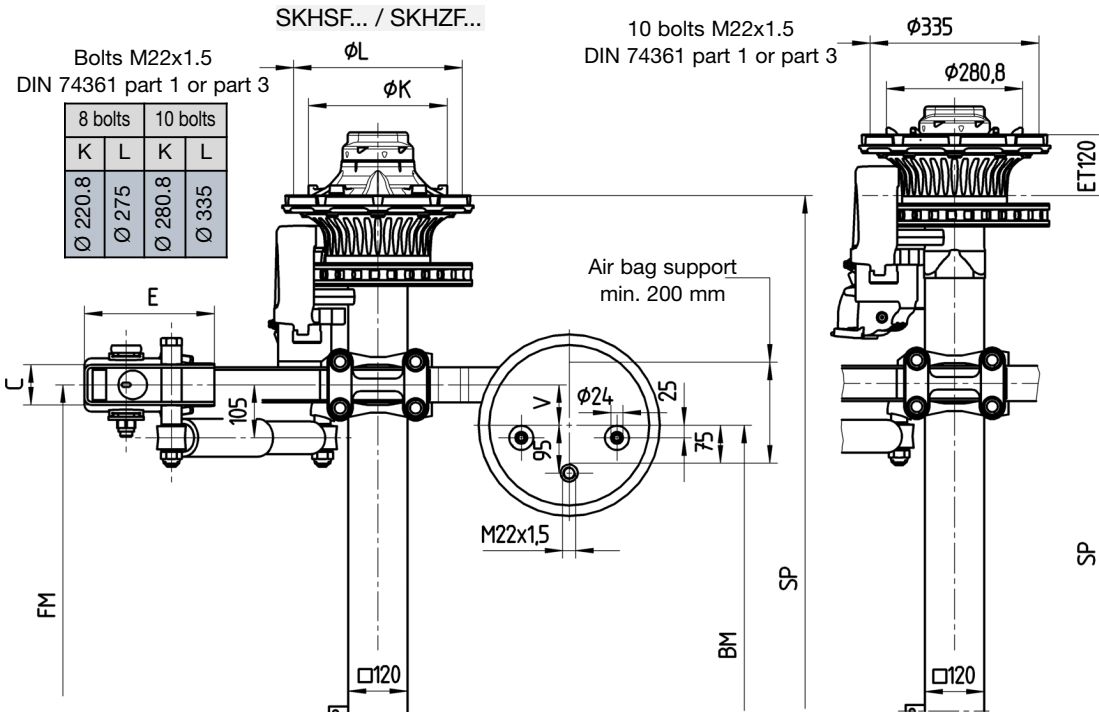
Line	Series	~ adjustable ride height FH					Total spring travel GF ¹⁾	Air bag	Shock absorber 02.37...	Hanger bracket				Shock absorber mount		
		for single axle	for axle units	min. FH with axle raised	Empty without air	Loaded without air				ST	C	E	G	D	F	
2)	1	ALMT	245-290	255-290	285	185	170	190	36K	..22.89.00	184	86	240	83	70	35
2)	2	ALMT	270-310	280-310	310	210	195	220	36	..22.89.00	184	86	240	83	70	35
	3	ALMT	280-325	290-325	320	220	205	190	36K	..22.83.00	268	80	258	83	55	35
2)	4	ALM	300-340	310-340	340	240	225	190	36K	..22.83.00	184	86	240	83	70	35
	5	ALMT	305-360	315-360	345	245	230	220	36	..22.83.00	268	80	258	83	55	35
	6	ALM	340-390	350-390	380	280	265	190	36K	..22.83.00	268	80	258	83	90	35
	7	ALM	365-420	375-420	405	305	290	220	36	..22.83.00	268	80	258	83	90	35

1) Lifting heights acc. to TD-1242.0

2) Only suitable for semitrailer

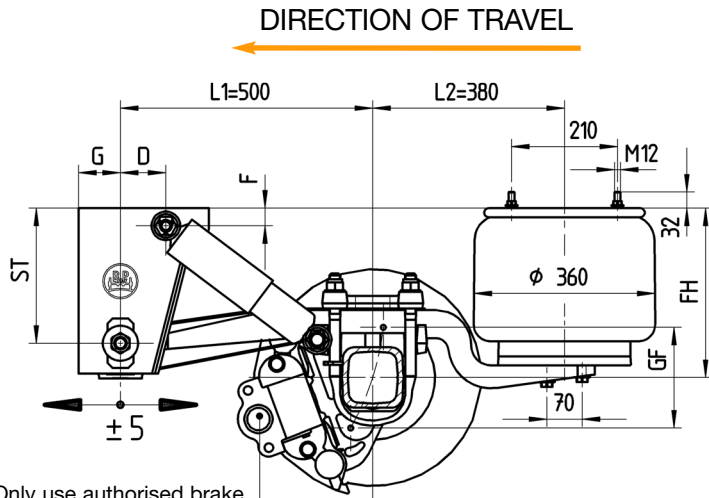
3) The load rating of the tyre mentioned in the drawing is in no relation to the axle load capacity. It is dependent on the information from the tyre manufacturer.

4) Note the maximum total width

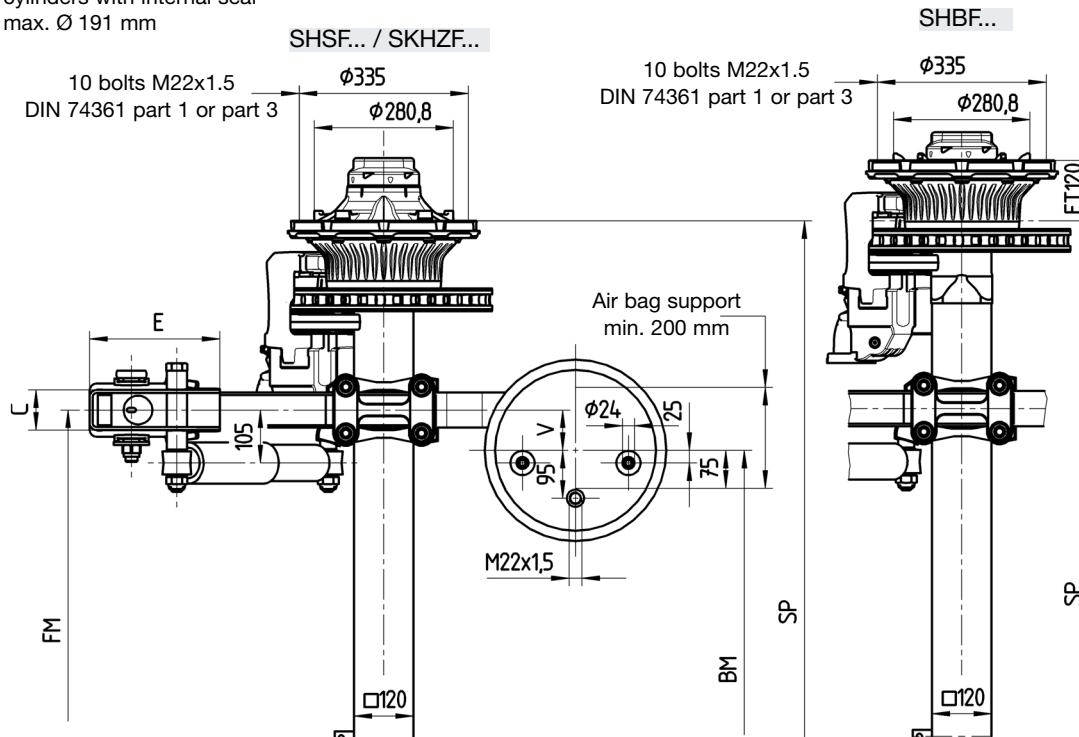


Axle type	Track SP with axle type		Spring centre FM	Air bag centre BM V=80	Tyres recommended	
	..9010	..9008			10 bolts	8 bolts
SKHSF..9010/9008	2000	2005	1200	1040	385/65 R22.5 385/55 R22.5	385/65 R19.5 ³⁾ 435/50 R19.5 ⁴⁾ 445/45 R19.5 ⁴⁾
SKHSF..9010/9008	2040	2045	1200	1040		
SKHSF..9010/9008	2040	2045	1300	1140		
SKHSF..9010/9008	2095	2100	1300	1140		
SKHSF..9010/9008	2140	2145	1400	1240		
SKHBF..9010	2000	--	1200	1040	385/65 R22.5 385/55 R22.5	--
SKHBF..9010	2040	--	1200	1040		
SKHBF..9010	2040	--	1300	1140		
SKHBF..9010	2095	--	1300	1140		
SKHBF..9010	2095	--	1300	1140		
SKHBF..9010	2140	--	1400	1240		
SKHBF..9010	2140	--	1400	1240		
SKHZF..9010/9008	1820	1825	900	740	275/70 R22.5	265/70 R19.5
SKHZF..9010/9008	1880	1885	980	820		
SKHZF..9010/9008	1920	1925	980	820		

Max. inclination angle of the semitrailer under full load and lowest adjustable ride height ±1°
With trailing arm L1=500 / L2=380, bag pressures acc. to TE-1188.0 sheet 11
The hanger brackets, air bag supports and the frame must be reinforced so that the forces applied can be absorbed. See the current BPW installation instructions.



Only use authorised brake cylinders with internal seal max. Ø 191 mm



Line	Series	~ adjustable ride height FH					Total spring travel (GF ¹⁾)	Air bag	Shock absorber 02.37...	Hanger bracket				Shock absorber mount		
		for single axle	for axle units	min. FH with axle raised	Empty without air	Loaded without air				ST	C	E	G	D	F	
2)	1	ALMT	245-290	255-290	285	185	170	190	36K	..22.89.00	184	86	240	83	70	35
2)	2	ALMT	270-310	280-310	310	210	195	220	36	..22.89.00	184	86	240	83	70	35
	3	ALMT	280-325	290-325	320	220	205	190	36K	..22.83.00	268	80	258	83	55	35
2)	4	ALM	300-340	310-340	340	240	225	190	36K	..22.83.00	184	86	240	83	70	35
	5	ALMT	305-360	315-360	345	245	230	220	36	..22.83.00	268	80	258	83	55	35
	6	ALM	340-390	350-390	380	280	265	190	36K	..22.83.00	268	80	258	83	90	35
	7	ALM	365-420	375-420	405	305	290	220	36	..22.83.00	268	80	258	83	90	35

¹⁾ Lifting heights acc. to TD-1242.0

²⁾ Only suitable for semitrailer

Axle type	Track SP	Spring centre FM	Air bag centre BM V=80	Tyres recommended
SHSF..9010	2010	1200	1040	385/65 R22.5
SHSF..9010	2040	1200	1040	
SHSF..9010	2040	1300	1140	
SHSF..9010	2095	1300	1140	
SHSF..9010	2140	1400	1240	
SHBF..9010	2000	1200	1040	
SHBF..9010	2040	1200	1040	
SHBF..9010	2040	1300	1140	
SHBF..9010	2095	1300	1140	
SHBF..9010	2140	1400	1240	275/70 R22.5
SHZF..9010	1820	900	740	
SHZF..9010	1880	980	820	
SHZF..9010	1920	980	820	

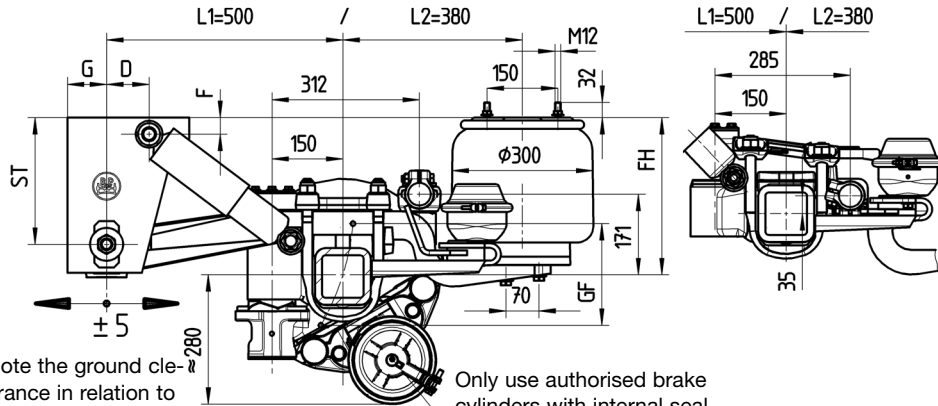
Max. inclination angle of the semitrailer under full load and lowest adjustable ride height $\pm 1^\circ$
With trailing arm L1=500 / L2=380, bag pressures acc. to TE-1188.0 sheet 11
The hanger brackets, air bag supports and the frame must be reinforced so that the forces applied can be absorbed. See the current BPW installation instructions.



DIRECTION OF TRAVEL

Series ALMLL

Series ALMTLL



Note the ground clearance in relation to the tyre size

Only use authorised brake cylinders with internal seal max. Ø 191 mm

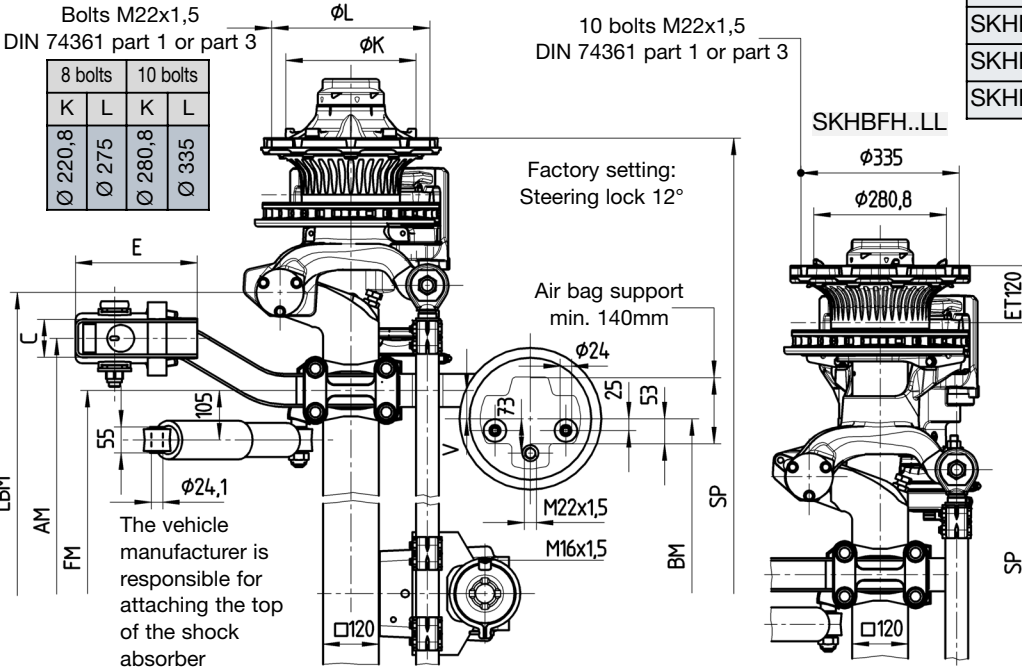
SKHSFH...LL

SKHBFH...LL

Bolts M22x1,5
DIN 74361 part 1 or part 3

10 bolts M22x1,5
DIN 74361 part 1 or part 3

8 bolts		10 bolts	
K	L	K	L
Ø 220,8	Ø 275	Ø 280,8	Ø 335



The vehicle manufacturer is responsible for attaching the top of the shock absorber

Line	Series	~ adjustable ride height FH				Total spring travel ¹⁾	Air bag	Shock absorber 02.37...	Hanger bracket				Shock absorber mount	
		for axle units	min. FH with axle raised	Empty without air	Loaded without air				ST	C	E	G	D	F
1	ALMTLL	255-290	285	185	170	190	30K	..22.89.00	184	86	240	83	70	35
2	ALMTLL	280-310	310	210	195	220	30	..22.89.00	184	86	240	83	70	35
5	ALMTLL	315-360	345	245	230	220	30	..22.83.00	268	80	258	83	55	35
6	ALMLL	350-390	380	280	265	190	30K	..22.83.00	268	80	258	83	90	35
7	ALMLL	375-420	405	305	290	220	30	..22.83.00	268	80	258	83	90	35

Axle type	Track SP / axle type		Spring centre FM	Support centre AM	Steering pin centre LBM	Air bag centre BM		Tyres recommended	
	..9010	..9008				V=20	V=60	10 bolts	8 bolts
SKHSFH...LL 9010/9008	2040	2045	980	1200	1395	940	860	385/65 R22,5 385/55 R22,5	385/65 R19,5 ²⁾
SKHSFH...LL 9010/9008	2095	2100	1080	1300	1450	1040	960		
SKHSFH...LL 9010/9008	2140	2145	1080	1300	1495	1040	960		
SKHBFH...LL 9010	2040	--	980	1200	1395	940	860	385/65 R22,5 385/55 R22,5	--
SKHBFH...LL 9010	2040	--	1080	1300	1395	1040	960		
SKHBFH...LL 9010	2095	--	1080	1300	1450	1040	960	385/65 R19,5 ²⁾	--
SKHBFH...LL 9010	2140	--	1080	1300	1495	1040	960		

¹⁾ Lifting heights acc. to TD-1242.0

²⁾ The load rating of the tyre mentioned in the drawing is in no relation to the axle load capacity.

It is dependent on the information from the tyre manufacturer.

Max. inclination angle of the semitrailer under full load and lowest adjustable ride height ±1°

With trailing arm L1=500 / L2=380, bag pressures acc. to TE-1188.0 sheet 11

The hanger brackets, air bag supports and the frame must be reinforced so that the forces applied can be absorbed. See the current BPW installation instructions.

With axle ratio - rigid to steering axle of 1:1, when fitted with a lifting axle and when using central lubrication systems, the steering axle must be equipped with a steering damper.

Series	Draglink position	Steering damper set	Drawing
ALMLL	312 / 171	05.872.00.56.0	04.00.095155
ALMTLL	285 / 35	05.872.00.59.0	04.00.510030

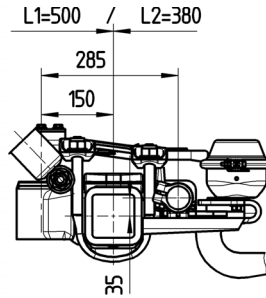
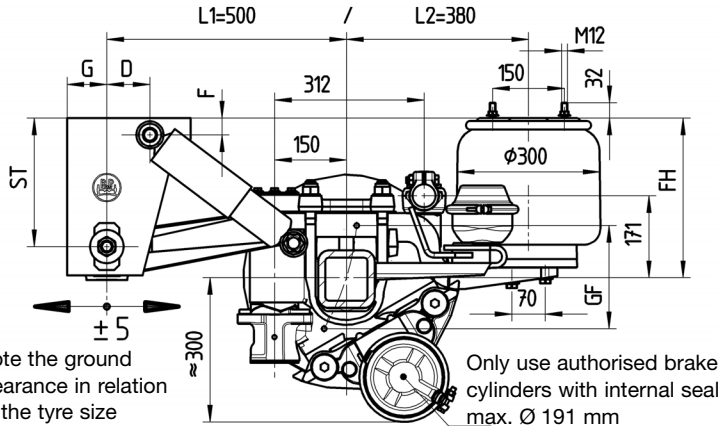


DIRECTION OF TRAVEL

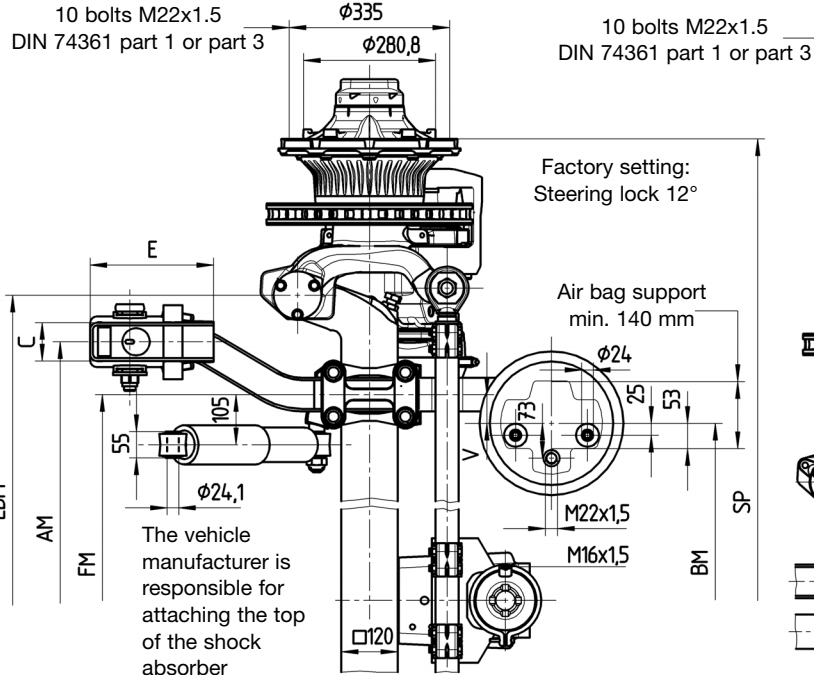


Series ALMLL

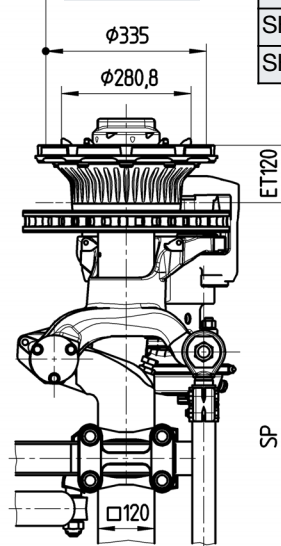
Series ALMTLL



SHSFH..LL



SHBFH..LL



Line	Series	≈ adjustable ride height FH				Total spring travel GF ¹⁾	Air bag	Shock absorber 02.37...	Hanger bracket				Shock absorber mount	
		for axle units	min. FH with axle raised	Empty without air	Loaded without air				ST	C	E	G	D	F
1	ALMTLL	255-290	285	185	170	190	30K	..22.89.00	184	86	240	83	70	35
2	ALMTLL	280-310	310	210	195	220	30	..22.89.00	184	86	240	83	70	35
5	ALMTLL	315-360	345	245	230	220	30	..22.83.00	268	80	258	83	55	35
6	ALMLL	350-390	380	280	265	190	30K	..22.83.00	268	80	258	83	90	35
7	ALMLL	375-420	405	305	290	220	30	..22.83.00	268	80	258	83	90	35

¹⁾ Lifting heights acc. to TD-1242.0

Axle type	Track SP	Spring centre FM	Support centre AM	Steering pin centre LBM	Air bag centre BM		Tyres recommended
					V=20	V=60	
SHSFH..LL 9010	2040	980	1200	1395	940	860	385/65 R22.5 385/55 R22.5
SHSFH..LL 9010	2040	1080	1300	1395	1040	960	
SHSFH..LL 9010	2095	1080	1300	1450	1040	960	
SHSFH..LL 9010	2140	1080	1300	1495	1040	960	
SHBFH..LL 9010	2040	980	1200	1395	940	860	
SHBFH..LL 9010	2040	1080	1300	1395	1040	960	
SHBFH..LL 9010	2095	1080	1300	1450	1040	960	
SHBFH..LL 9010	2140	1080	1300	1495	1040	960	

Max. inclination angle of the semitrailer under full load and lowest adjustable ride height ±1°

With trailing arm L1=500 / L2=380, bag pressures acc. to TE-1188.0 sheet 15

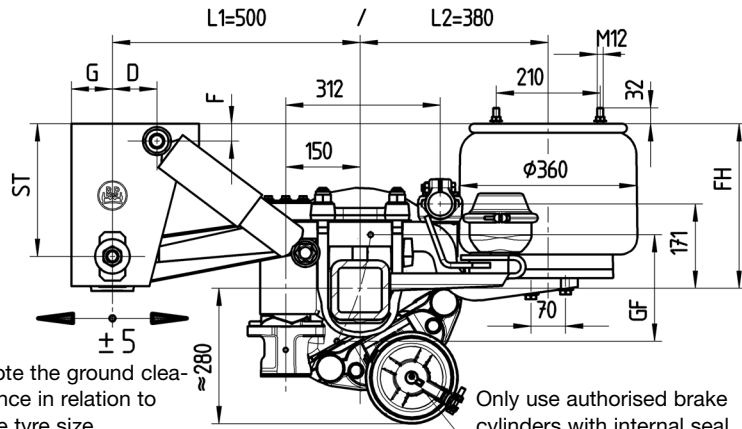
The hanger brackets, air bag supports and the frame must be reinforced so that the forces applied can be absorbed. See the current BPW installation instructions.

With axle ratio - rigid to steering axle of 1:1, when fitted with a lifting axle and when using central lubrication systems, the steering axle must be equipped with a steering damper.

Series	Draglink position	Steering damper set	Drawing
ALMLL	312 / 171	05.872.00.56.0	04.00.095155
ALMTLL	285 / 35	05.872.00.59.0	04.00.510030



DIRECTION OF TRAVEL



Note the ground clearance in relation to the tyre size

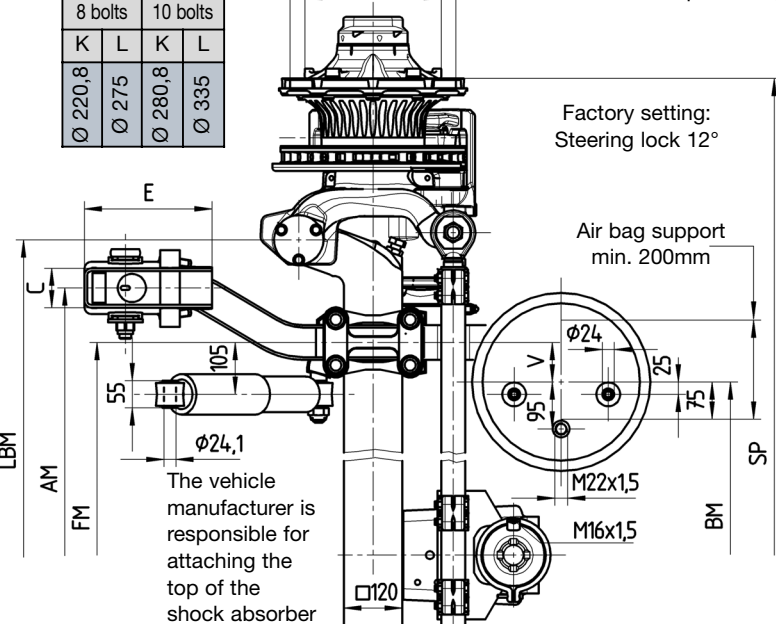
Only use authorised brake cylinders with internal seal max. Ø 191 mm

SKHSFH...LL

Bolts M22x1,5
DIN 74361 part 1 or part 3

8 bolts		10 bolts	
K	L	K	L
Ø 220,8	Ø 275	Ø 280,8	Ø 335

10 bolts M22x1,5
DIN 74361 part 1 or part 3

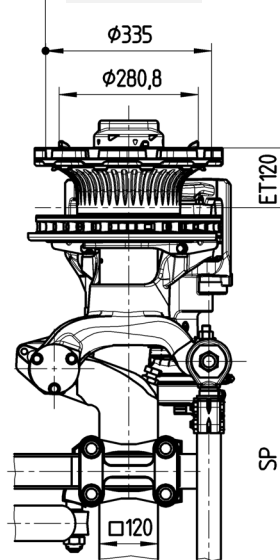


Factory setting:
Steering lock 12°

Air bag support
min. 200mm

The vehicle manufacturer is responsible for attaching the top of the shock absorber

SKHBFH...LL



Line	Series	≈ adjustable ride height FH				Total spring travel GF ¹⁾	Air bag	Shock absorber 02.37...	Hanger bracket				Shock absorber mount	
		for axle units	min. FH with axle raised	Empty without air	Loaded without air				ST	C	E	G	D	F
6	ALMLL	350-390	380	280	265	190	36K	..22.83.00	268	80	258	83	90	35
7	ALMLL	375-420	405	305	290	220	36	..22.83.00	268	80	258	83	90	35

Axle type	Track SP / Axle type		Spring centre FM	Support centre AM	Steering pin centre LBM	Air bag centre BM V=80	Tyres recommended	
	..9010	..9008					10 bolts	8 bolts
SKHSFH...LL 9010/9008	2040	2045	980	1200	1395	820	385/65 R22,5 385/55 R22,5	385/65 R19,5 ²⁾
SKHSFH...LL 9010/9008	2095	2100	1080	1300	1450	920		
SKHSFH...LL 9010/9008	2140	2145	1080	1300	1495	920		
SKHBFH...LL 9010	2040	--	980	1200	1395	820	385/65 R22,5 385/55 R22,5	--
SKHBFH...LL 9010	2040	--	1080	1300	1395	920		
SKHBFH...LL 9010	2095	--	1080	1300	1450	920		
SKHBFH...LL 9010	2140	--	1080	1300	1495	920		

¹⁾ Lifting heights acc. to TD-1242.0

²⁾ The load rating of the tyre mentioned in the drawing is in no relation to the axle load capacity. It is dependent on the information from the tyre manufacturer.

Max. inclination angle of the semitrailer under full load and lowest adjustable ride height ±1°

With trailing arm L1=500 / L2=380, bag pressures acc. to TE-1188.0 sheet 11

The hanger brackets, air bag supports and the frame must be reinforced so that the forces applied can be absorbed. See the current BPW installation instructions.

With axle ratio - rigid to steering axle of 1:1, when fitted with a lifting axle and when using central lubrication systems, the steering axle must be equipped with a steering damper.

Series	Draglink position	Steering damper set	Drawing
ALMLL	312 / 171	05.872.00.56.0	04.00.095155

Airlight II

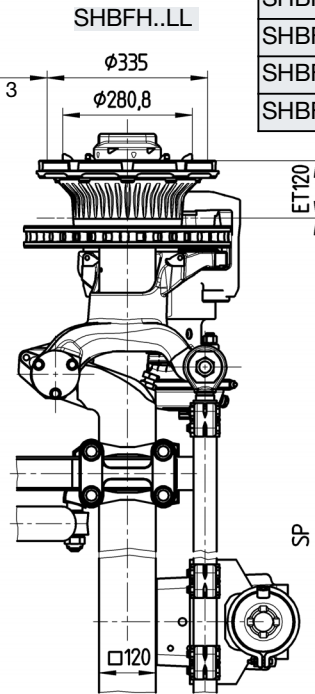
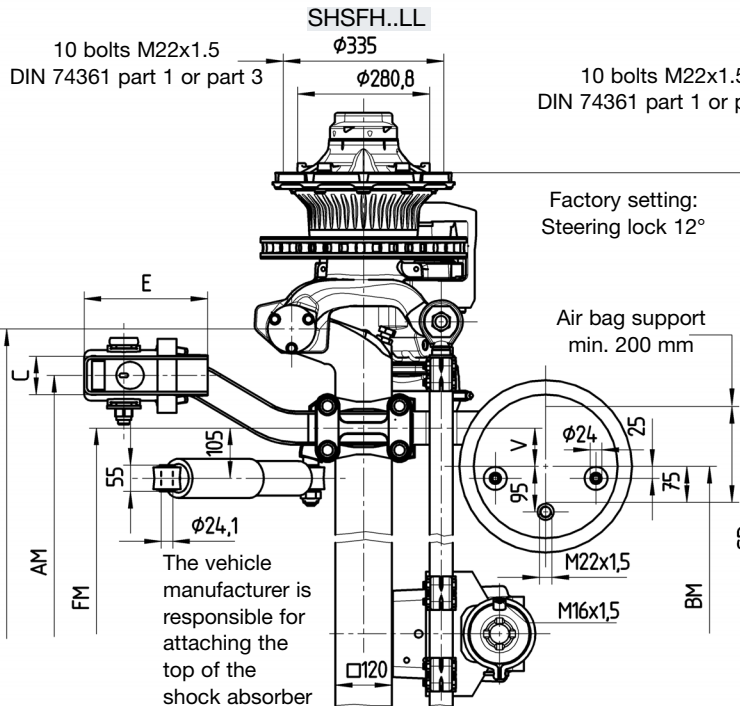
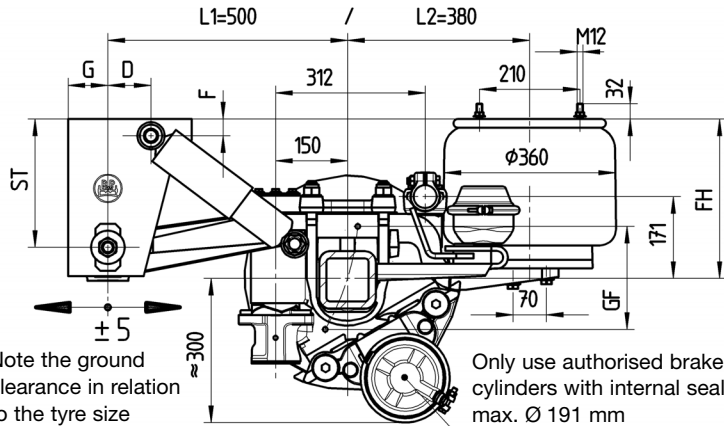
Self-steering axles with disc brake TSB 4309

Ride height 350-420 mm
for semitrailer

AL II-TSB.0
Sheet No. 11a



DIRECTION OF TRAVEL



Line	Series	≈ adjustable ride height FH				Total spring travel GF ¹⁾	Air bag	Shock absorber 02.37...	Hanger bracket				Shock absorber mount	
		for axle units	min. FH with axle raised	Empty without air	Loaded without air				ST	C	E	G	D	F
6	ALMLL	350-390	380	280	265	190	36K	..22.83.00	268	80	258	83	90	35
7	ALMLL	375-420	405	305	290	220	36	..22.83.00	268	80	258	83	90	35

¹⁾ Lifting heights acc. to TD-1242.0

Axle type	Track SP	Spring centre FM	Support centre AM	Steering pin centre LBM	Air bag centre BM	Tyres recommended
					V=80	
SHSFH..LL 9010	2040	980	1200	1395	820	385/65 R22.5 385/55 R22.5
SHSFH..LL 9010	2040	1080	1300	1395	920	
SHSFH..LL 9010	2095	1080	1300	1450	920	
SHSFH..LL 9010	2140	1080	1300	1495	920	
SHBFH..LL 9010	2040	980	1200	1395	820	
SHBFH..LL 9010	2040	1080	1300	1395	920	
SHBFH..LL 9010	2095	1080	1300	1450	920	
SHBFH..LL 9010	2095	1080	1300	1450	920	
SHBFH..LL 9010	2140	1080	1300	1495	920	
SHBFH..LL 9010	2140	1080	1300	1495	920	

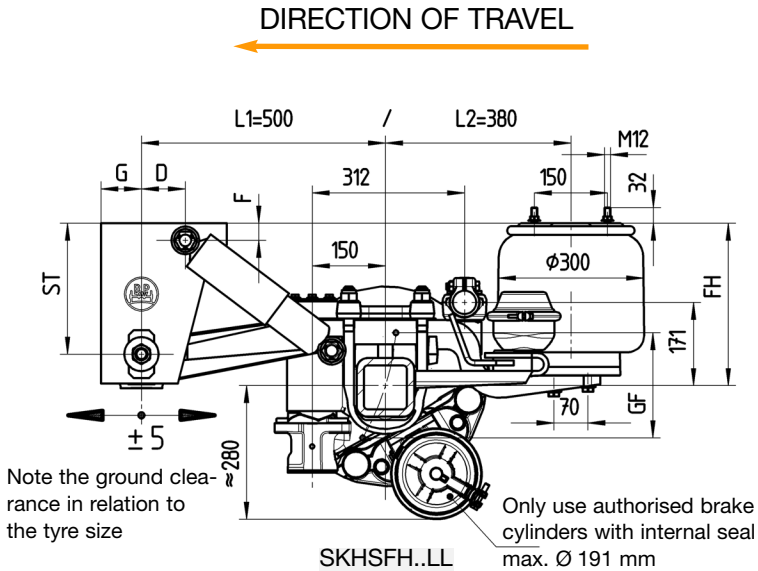
Max. inclination angle of the semitrailer under full load and lowest adjustable ride height ±1°

With trailing arm L1=500 / L2=380, bag pressures acc. to TE-1188.0 sheet 11

The hanger brackets, air bag supports and the frame must be reinforced so that the forces applied can be absorbed. See the current BPW installation instructions.

With axle ratio - rigid to steering axle of 1:1, when fitted with a lifting axle and when using central lubrication systems, the steering axle must be equipped with a steering damper.

Series	Draglink position	Steering damper set	Drawing
ALMLL	312 / 171	05.872.00.56.0	04.00.095155



Note the ground clearance in relation to the tyre size

Only use authorised brake cylinders with internal seal max. \varnothing 191 mm

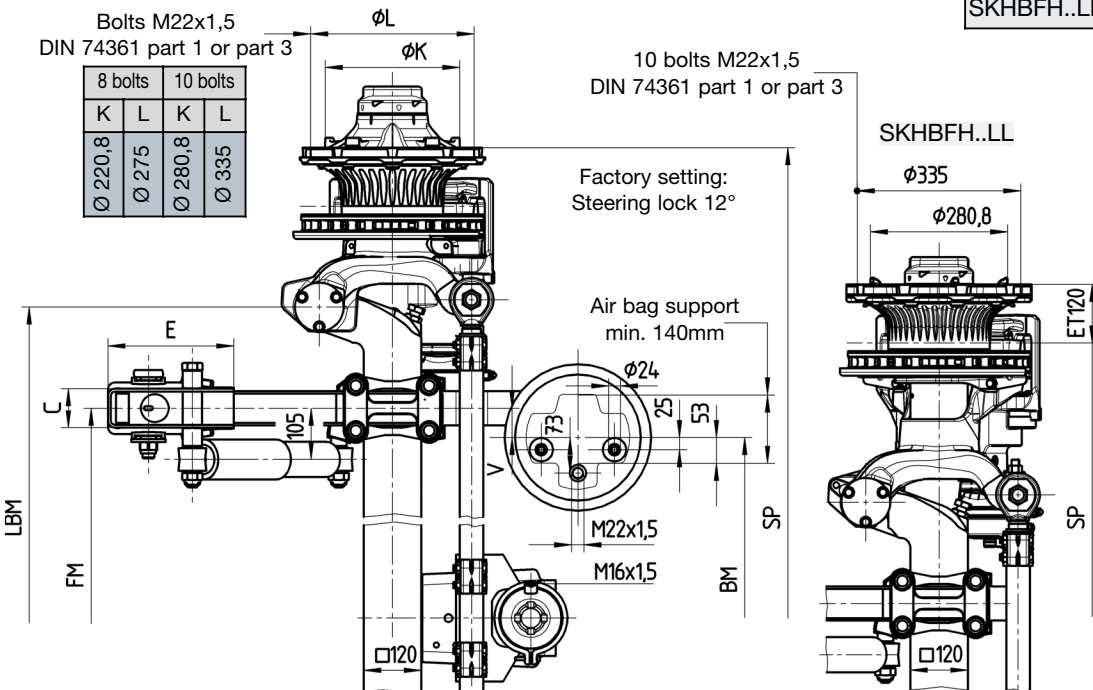
Bolts M22x1,5
DIN 74361 part 1 or part 3

8 bolts		10 bolts	
K	L	K	L
\varnothing 220,8	\varnothing 275	\varnothing 280,8	\varnothing 335

10 bolts M22x1,5
DIN 74361 part 1 or part 3

Factory setting:
Steering lock 12°

Air bag support
min. 140mm



Line	Series	~ adjustable ride height FH				Total spring travel GF ¹⁾	Air bag	Shock absorber 02.37...	Hanger bracket				Shock absorber mount	
		for axle units	min. FH with axle raised	Empty without air	Loaded without air				ST	C	E	G	D	F
6	ALMLL	350-390	380	280	265	190	30K	..22.83.00	268	80	258	83	90	35
7	ALMLL	375-420	405	305	290	220	30	..22.83.00	268	80	258	83	90	35

Axle type	Track SP / Axle type		Spring centre FM	Steering pin centre LBM	Air bag centre BM		Tyres recommended	
	..9010	..9008			V=20	V=60	10 bolts	8 bolts
SKHSFH..LL 9010/9008	2040	2045	980	1395	940	860	385/65 R22,5 385/55 R22,5	385/65 R19,5 ²⁾
SKHSFH..LL 9010/9008	2095	2100	1080	1450	1040	960		
SKHSFH..LL 9010/9008	2140	2145	1080	1495	1040	960		
SKHBFH..LL 9010	2040	--	980	1395	940	860	385/65 R22,5 385/55 R22,5 385/65 R19,5 ²⁾	--
SKHBFH..LL 9010	2040	--	1080	1395	1040	960		
SKHBFH..LL 9010	2095	--	1080	1450	1040	960		
SKHBFH..LL 9010	2140	--	1080	1495	1040	960		

¹⁾ Lifting heights acc. to TD-1242.0

²⁾ The load rating of the tyre mentioned in the drawing is in no relation to the axle load capacity.

It is dependent on the information from the tyre manufacturer.

Max. inclination angle of the semitrailer under full load and lowest adjustable ride height $\pm 1^\circ$

With trailing arm L1=500 / L2=380, bag pressures acc. to TE-1188.0 sheet 15

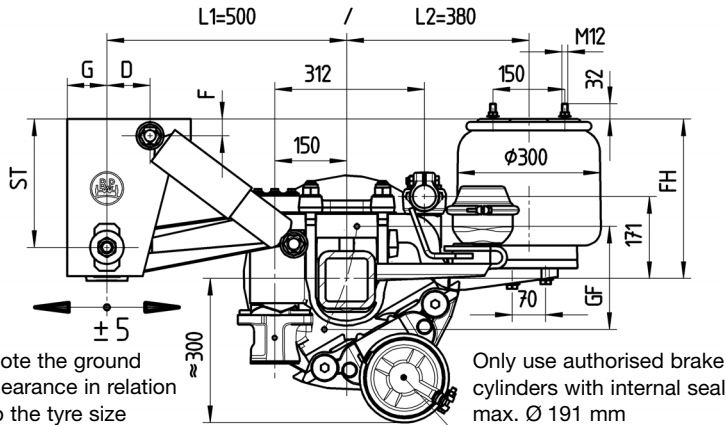
The hanger brackets, air bag supports and the frame must be reinforced so that the forces applied can be absorbed. See the current BPW installation instructions.

With axle ratio - rigid to steering axle of 1:1, when fitted with a lifting axle and when using central lubrication systems, the steering axle must be equipped with a steering damper.

Series	Draglink position	Steering damper set	Drawing
ALMLL	312 / 171	05.872.00.56.0	04.00.095155



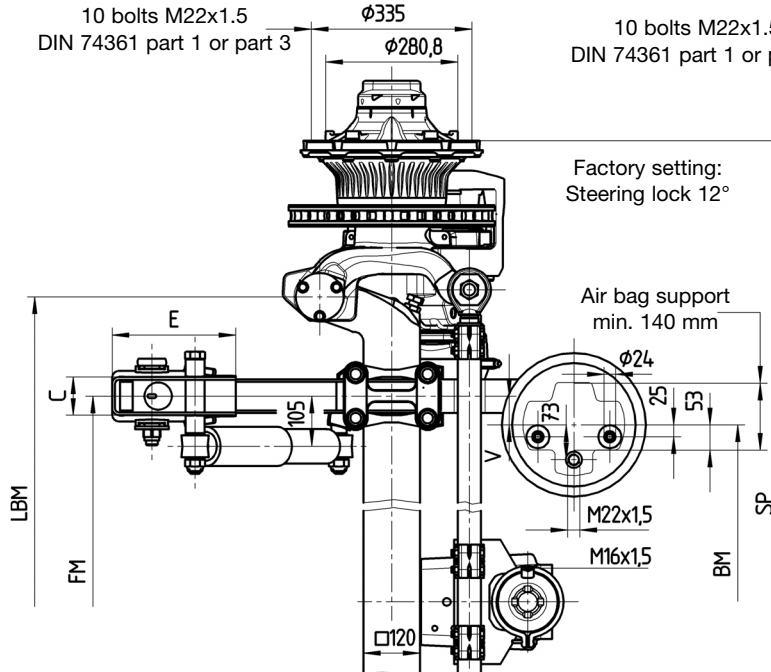
DIRECTION OF TRAVEL



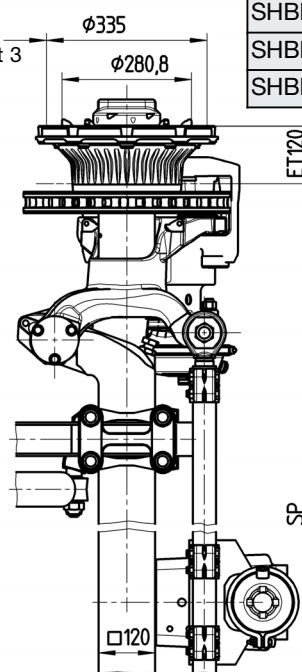
SHSFH..LL

10 bolts M22x1.5
DIN 74361 part 1 or part 3

10 bolts M22x1.5
DIN 74361 part 1 or part 3



SHBFH..LL



Line	Series	≈ adjustable ride height FH				Total spring travel (GF ¹⁾	Air bag	Shock absorber 02.37...	Hanger bracket				Shock absorber mount	
		for axle units	min. FH with axle raised	Empty without air	Loaded without air				ST	C	E	G	D	F
6	ALMLL	350-390	380	280	265	190	30K	..22.83.00	268	80	258	83	90	35
7	ALMLL	375-420	405	305	290	220	30	..22.83.00	268	80	258	83	90	35

¹⁾ Lifting heights acc. to TD-1242.0

Axle type	Track SP	Spring centre FM	Steering pin centre LBM	Air bag centre BM		Tyres recommended
				V=20	V=60	
SHSFH..LL 9010	2040	980	1395	940	860	385/65 R22.5 385/55 R22.5
SHSFH..LL 9010	2040	1080	1395	1040	960	
SHSFH..LL 9010	2095	1080	1450	1040	960	
SHSFH..LL 9010	2140	1080	1495	1040	960	
SHBFH..LL 9010	2040	980	1395	940	860	
SHBFH..LL 9010	2040	1080	1395	1040	960	
SHBFH..LL 9010	2095	1080	1450	1040	960	
SHBFH..LL 9010	2140	1080	1495	1040	960	

Max. inclination angle of the semitrailer under full load and lowest adjustable ride height ±1°

With trailing arm L1=500 / L2=380, bag pressures acc. to TE-1188.0 sheet 15

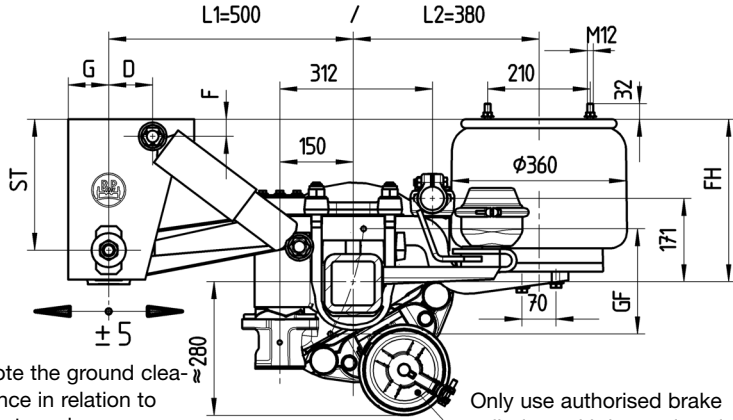
The hanger brackets, air bag supports and the frame must be reinforced so that the forces applied can be absorbed. See the current BPW installation instructions.

With axle ratio - rigid to steering axle of 1:1, when fitted with a lifting axle and when using central lubrication systems, the steering axle must be equipped with a steering damper.

Series	Draglink position	Steering damper set	Drawing
ALMLL	312 / 171	05.872.00.56.0	04.00.095155



DIRECTION OF TRAVEL



SKHSFH...LL

Only use authorised brake cylinders with internal seal max. \varnothing 191 mm

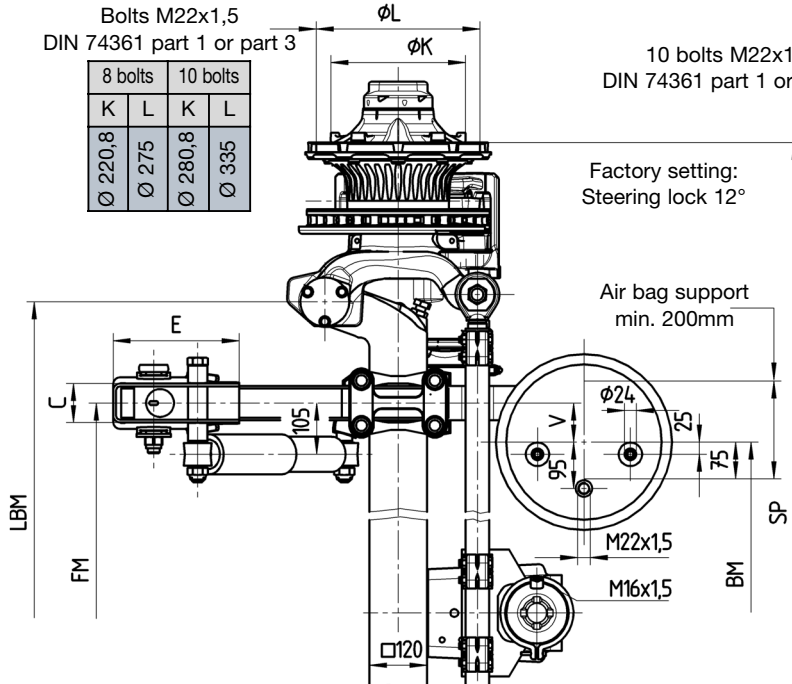
Bolts M22x1,5
DIN 74361 part 1 or part 3

8 bolts		10 bolts	
K	L	K	L
\varnothing 220,8	\varnothing 275	\varnothing 280,8	\varnothing 335

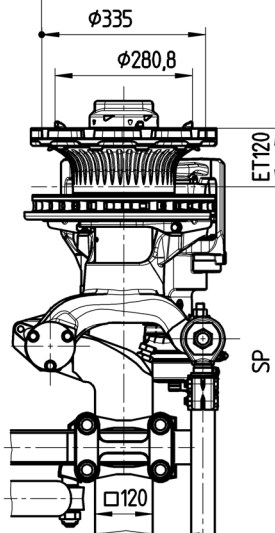
10 bolts M22x1,5
DIN 74361 part 1 or part 3

Factory setting:
Steering lock 12°

Air bag support
min. 200mm



SKHBFH...LL



Line	Series	~ adjustable ride height FH				Total spring travel (GF ¹⁾)	Air bag	Shock absorber 02.37...	Hanger bracket				Shock absorber mount	
		for axle units	min. FH with axle raised	Empty without air	Loaded without air				ST	C	E	G	D	F
6	ALMLL	350-390	380	280	265	190	36K	..22.83.00	268	80	258	83	90	35
7	ALMLL	375-420	405	305	290	220	36	..22.83.00	268	80	258	83	90	35

Axle type	Track SP / axle type		Spring centre FM	Steering pin centre LBM	Air bag centre BM V=80	Tyres recommended	
	..9010	..9008				10 bolts	8 bolts
SKHSFH...LL 9010/9008	2040	2045	980	1395	820	385/65 R22,5 385/55 R22,5	385/65 R19,5 ²⁾
SKHSFH...LL 9010/9008	2095	2100	1080	1450	920		
SKHSFH...LL 9010/9008	2140	2145	1080	1495	920		
SKHBFH...LL 9010	2040	--	980	1395	820	385/65 R22,5 385/55 R22,5	--
SKHBFH...LL 9010	2040	--	1080	1395	920		
SKHBFH...LL 9010	2095	--	1080	1450	920		
SKHBFH...LL 9010	2140	--	1080	1495	920	385/65 R19,5 ²⁾	

¹⁾ Lifting heights acc. to TD-1242.0

²⁾ The load rating of the tyre mentioned in the drawing is in no relation to the axle load capacity. It is dependent on the information from the tyre manufacturer.

Max. inclination angle of the semitrailer under full load and lowest adjustable ride height $\pm 1^\circ$

With trailing arm L1=500 / L2=380, bag pressures acc. to TE-1188.0 sheet 11

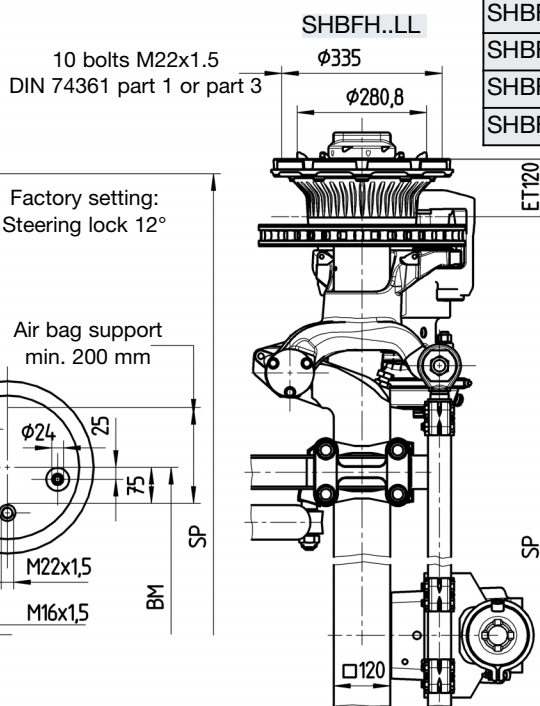
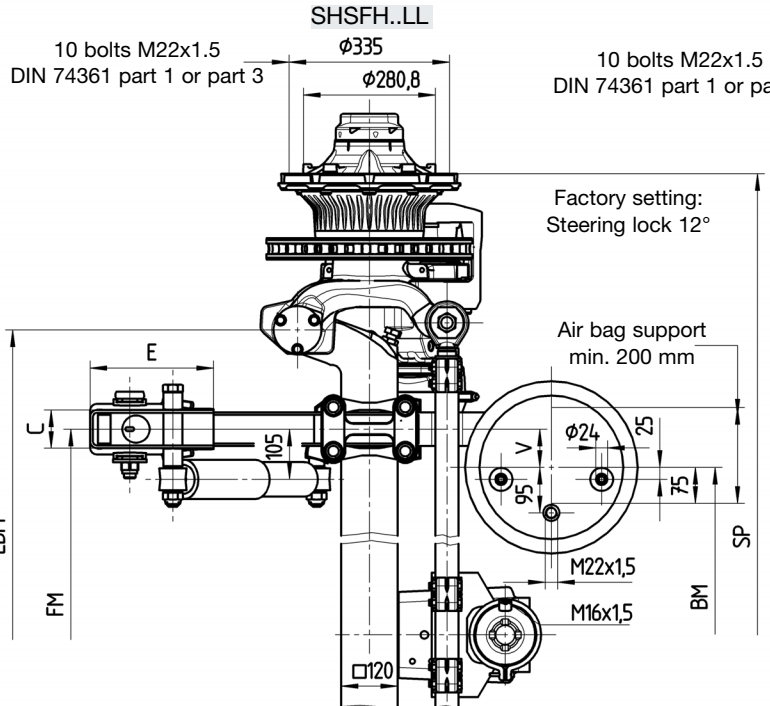
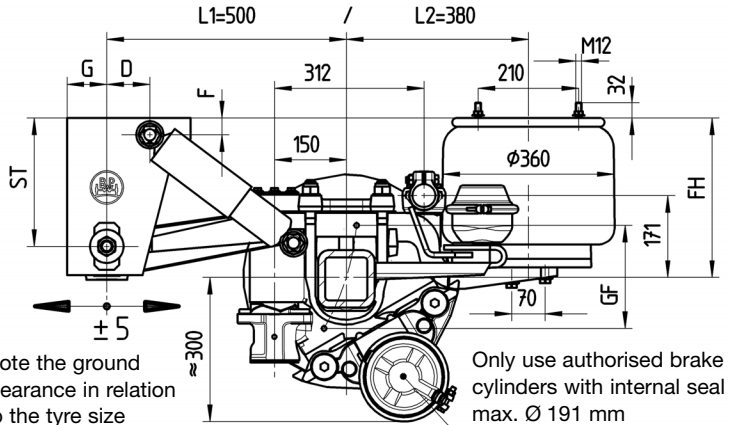
The hanger brackets, air bag supports and the frame must be reinforced so that the forces applied can be absorbed. See the current BPW installation instructions.

With axle ratio - rigid to steering axle of 1:1, when fitted with a lifting axle and when using central lubrication systems, the steering axle must be equipped with a steering damper.

Series	Draglink position	Steering damper set	Drawing
ALMLL	312 / 171	05.872.00.56.0	04.00.095155



DIRECTION OF TRAVEL



Line	Series	≈ adjustable ride height FH				Total spring travel GF ¹⁾	Air bag	Shock absorber 02.37...	Hanger bracket				Shock absorber mount	
		for axle units	min. FH with axle raised	Empty without air	Loaded without air				ST	C	E	G	D	F
6	ALMLL	350-390	380	280	265	190	36K	..22.83.00	268	80	258	83	90	35
7	ALMLL	375-420	405	305	290	220	36	..22.83.00	268	80	258	83	90	35

¹⁾ Lifting heights acc. to TD-1242.0

Axle type	Track SP	Spring centre FM	Steering pin centre LBM	Air bag centre BM	Tyres recommended
				V=80	
SHSFH..LL 9010	2040	980	1395	820	385/65 R22.5 385/55 R22.5
SHSFH..LL 9010	2040	1080	1395	920	
SHSFH..LL 9010	2095	1080	1450	920	
SHSFH..LL 9010	2140	1080	1495	920	
SHBFH..LL 9010	2040	980	1395	820	
SHBFH..LL 9010	2040	1080	1395	920	
SHBFH..LL 9010	2095	1080	1450	920	
SHBFH..LL 9010	2140	1080	1495	920	

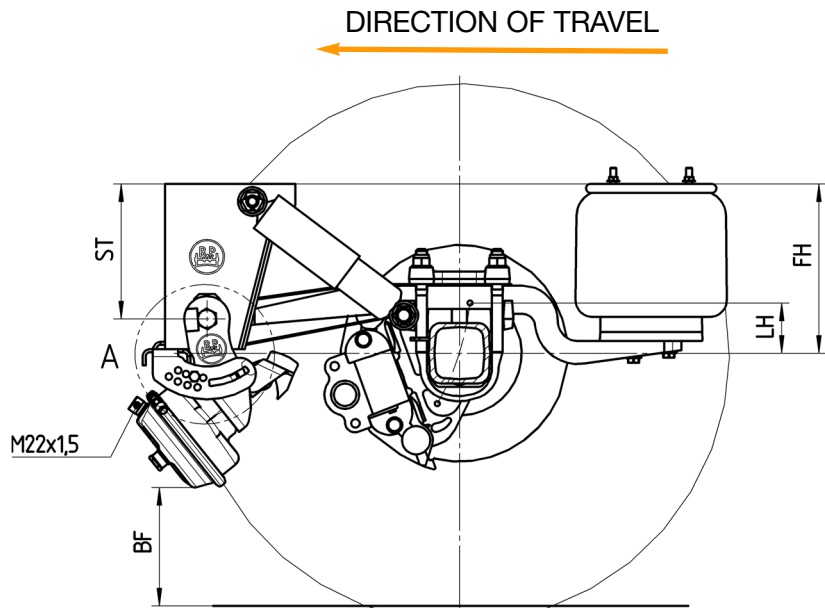
Max. inclination angle of the semitrailer under full load and lowest adjustable ride height ±1°

With trailing arm L1=500 / L2=380, bag pressures acc. to TE-1188.0 sheet 11

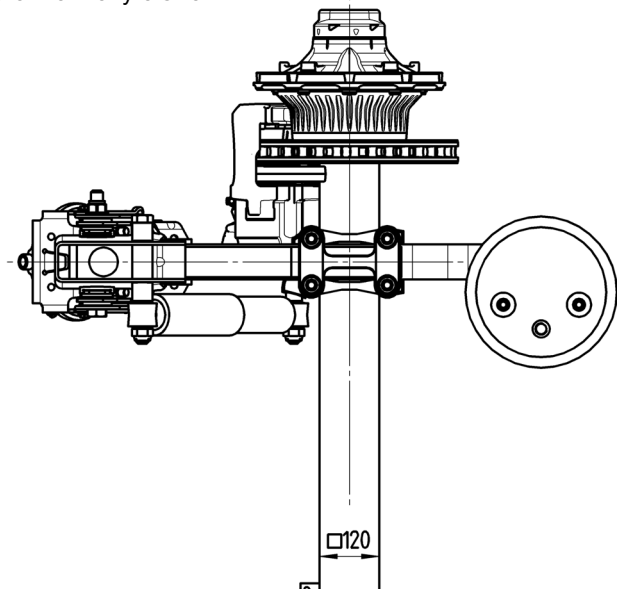
The hanger brackets, air bag supports and the frame must be reinforced so that the forces applied can be absorbed. See the current BPW installation instructions.

With axle ratio - rigid to steering axle of 1:1, when fitted with a lifting axle and when using central lubrication systems, the steering axle must be equipped with a steering damper.

Series	Draglink position	Steering damper set	Drawing
ALMLL	312 / 171	05.872.00.56.0	04.00.095155



* Note the ground clearance in relation to the tyre size !

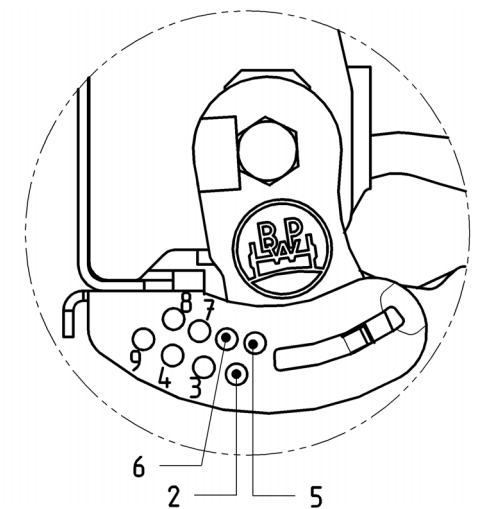
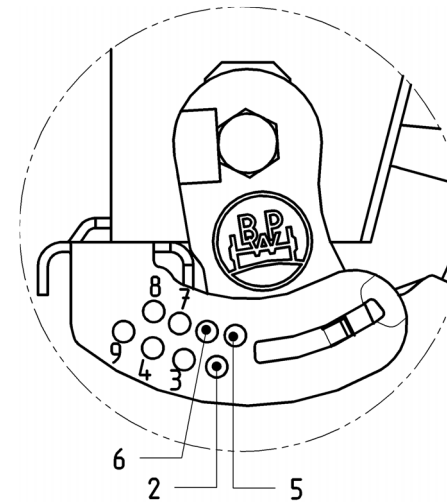


Suspension to drawing ALII-TSB.0 Sheet No.	≈ adjustable ride height FH		min. Lifting height LH	Support height ST	Ground clearance BF ¹⁾	Stop position in version
	for axle units	min. FH with axle raised				
Sheet 8, 8a	255-290	285	100	184	262	5
	280-310	310	100	184	287	6
	290-325	320	100	268	213	5
Sheet 9, 9a	310-340	340	100	184	316	6
	315-360	345	100	268	238	5
	350-390	380	100	268	271	2
	375-420	405	100	268	297	6

¹⁾ Ground clearance in the relation to the set minimum ride height with the axle raised.
* Tyre: 385/65 R 22.5 ($r_{stat} = 496$)

Detail A Support configuration

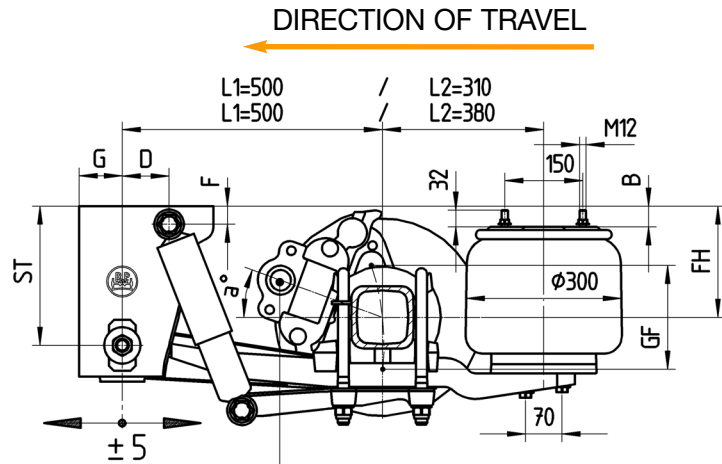
Channel crossmember version



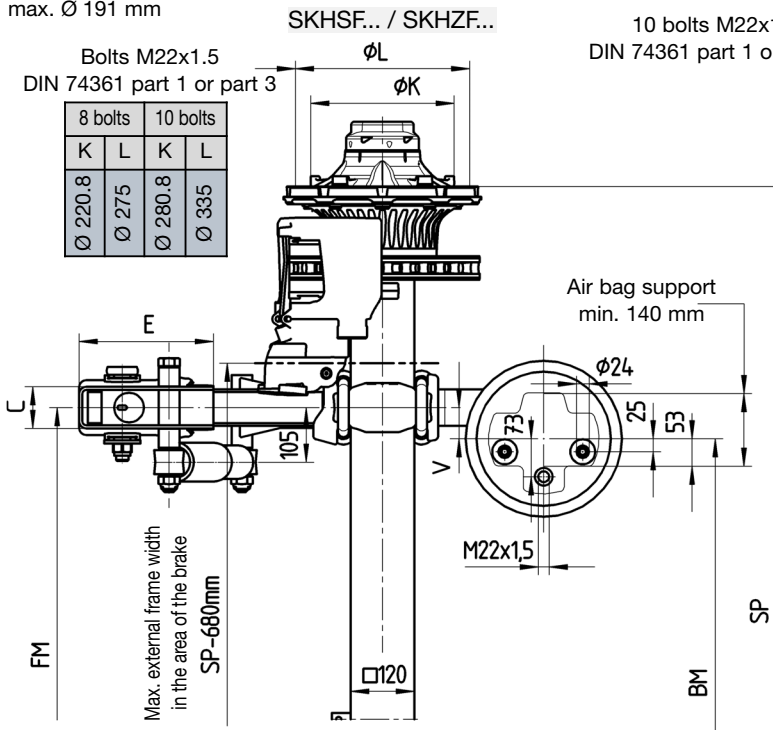
In the lifting and lowering version, the total spring travel must be limited by a shut-off valve.

Minimum air pressure for lifting the axle approx. 6 bar.

The hanger brackets, air bag supports and the frame must be reinforced so that the forces applied can be absorbed. See the current BPW installation instructions.



Only use authorised brake cylinders with internal seal max. Ø 191 mm



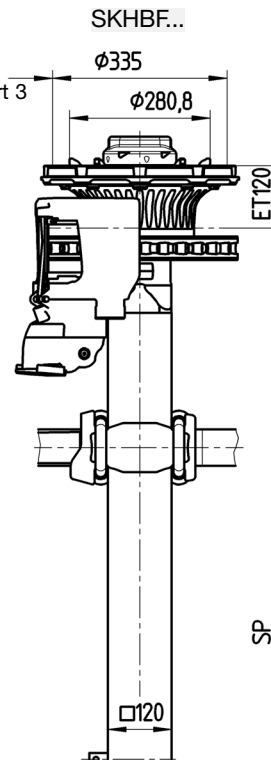
Line	Series	≈ adjustable ride height FH					Total spring travel GF ¹⁾	Air bag	Shock absorber 02.37...	Hanger bracket				Shock absorber mount		Bracket ²⁾	Brake position
		for single axles	for axle units	min. FH with axle raised	Empty without air	Loaded without air				ST	C	E	G	D	F		
1	ALU	205-255	215-255	245	145	130	190	30K	..22.83.00	268	80	258	83	55	35	---	15°
2	ALU	235-290	245-290	275	175	160	220	30	..22.83.00	268	80	258	83	90	35	---	20°
3	ALU	260-300	270-300	300	200	185	220	30	..22.83.00	268	80	258	83	90	35	40	20°

1) Lifting heights acc. to TD-1242.0

2) Bracket is not supplied

3) The load rating of the tyre mentioned in the drawing is in no relation to the axle load capacity. It is dependent on the information from the tyre manufacturer.

4) Note the maximum total width.



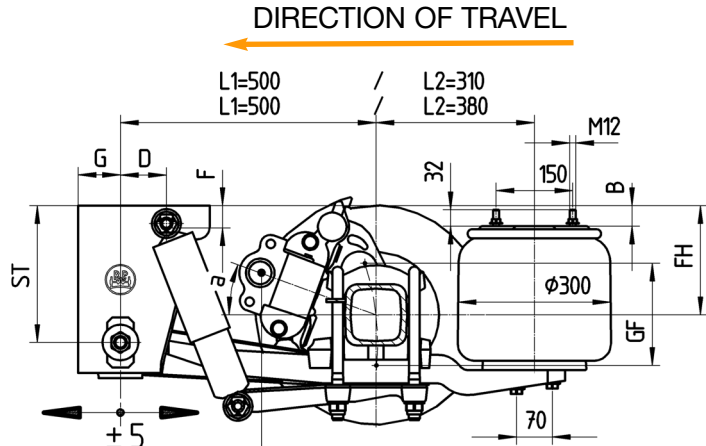
Axle type	Track SP with axle type		Spring centre FM	Air bag centre BM		Tyres recommended	
	..9010	..9008		V=20	V=60	10 bolts	8 bolts
SKHSF..9010/9008	2000	2005	1100	1060	980	385/65 R22.5	385/65 R19.5 ³⁾
SKHSF..9010/9008	2040	2045	1100	1060	980	385/55 R22.5	435/50 R19.5 ⁴⁾
SKHBF..9010	2000	--	1200	1160	1080	385/65 R22.5	--
SKHBF..9010	2040	--	1200	1160	1080	385/55 R22.5	--
SKHBF..9010	2040	--	1300	1260	1180	385/65 R19.5 ³⁾	--
SKHBF..9010	2095	--	1300	1260	1180	435/50 R19.5 ⁴⁾	--
SKHBF..9010	2140	--	1400	1360	1280	445/45 R19.5 ⁴⁾	--
SKHZF..9010/9008	1820	1825	900	860	780	275/70 R22.5	265/70 R19.5
SKHZF..9010/9008	1880	1885	980	---	860	275/70 R22.5	265/70 R19.5
SKHZF..9010/9008	1920	1925	980	940	860	275/70 R22.5	265/70 R19.5

Max. inclination angle of the semitrailer under full load and lowest adjustable ride height ±1°

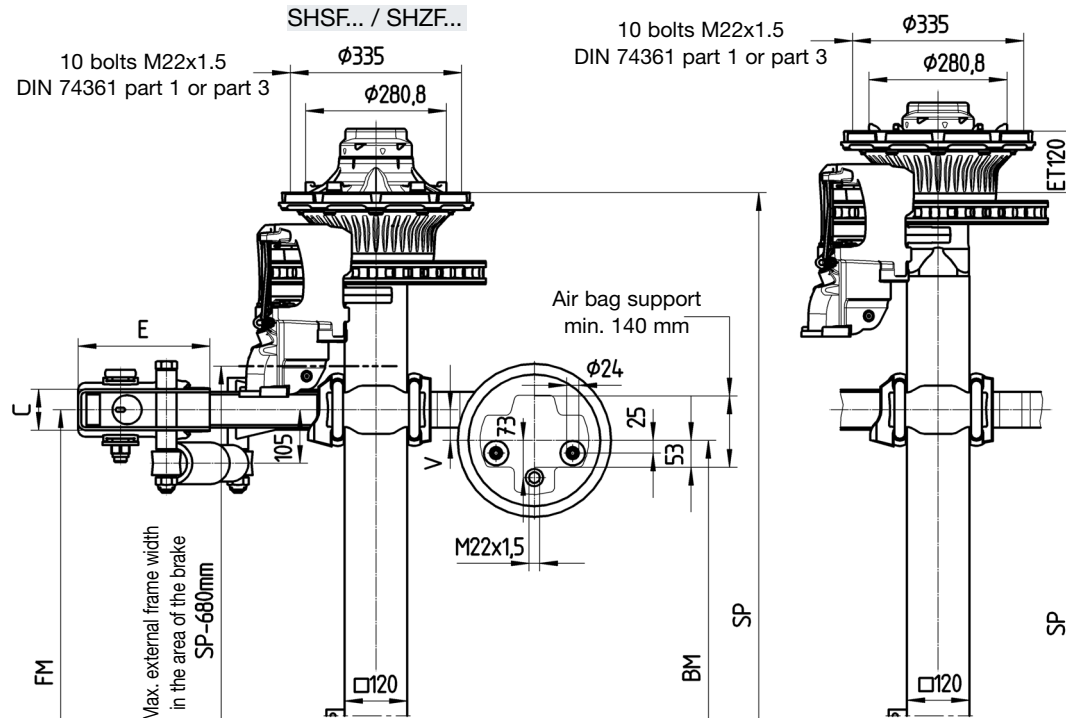
With trailing arm L1=500 / L2=310, bag pressures acc. to TE-1188.0 sheet 18

With trailing arm L1=500 / L2=380, bag pressures acc. to TE-1188.0 sheet 15

The hanger brackets, air bag supports and the frame must be reinforced so that the forces applied can be absorbed. See the current BPW installation instructions.



Only use authorised brake cylinders with internal seal max. Ø 186 mm

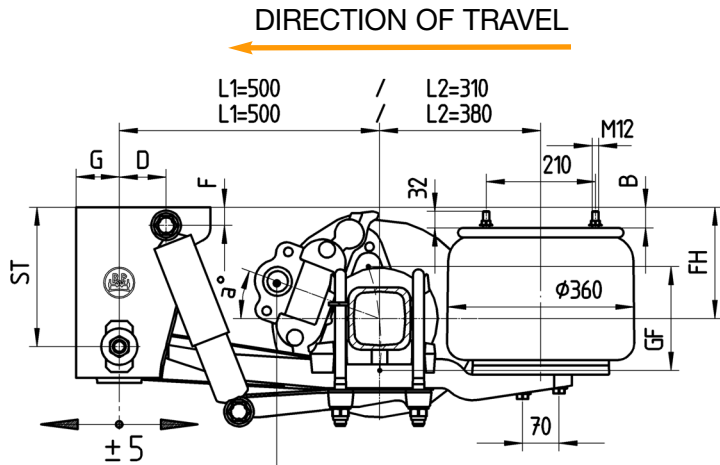


Line	Series	~ adjustable ride height FH					Total spring travel (GF ¹⁾)	Air bag	Shock absorber 02.37...	Hanger bracket				Shock absorber mount		Bracket ²⁾	Brake position	
		for single axles	for axle units	min. FH with axle raised	Empty without air	Loaded without air				ST	C	E	G	D	F			B
3)	2	ALU	235-290	245-290	275	175	160	220	30	..22.83.00	268	80	258	83	55	35	---	20°
3)	3	ALU	260-300	270-300	300	200	185	220	30	..22.83.00	268	80	258	83	55	35	40	20°

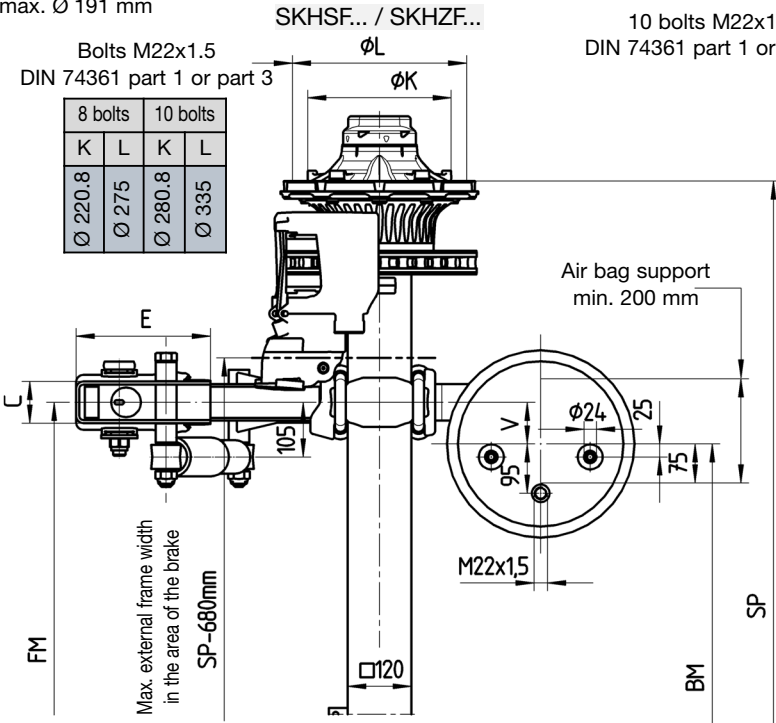
- 1) Lifting heights acc. to TD-1242.0
- 2) Bracket is not supplied
- 3) Versions with channel crossmember and aluminium hanger brackets are not possible in the ALU series with TSB 4309

Axle type	Track SP	Spring centre FM	Air bag centre BM		Tyres recommended
			V=20	V=60	
SHSF..9010	2010	1100	1060	980	385/65 R22.5
SHSF..9010	2040	1100	1060	980	
SHSF..9010	2040	1200	1160	1080	
SHBF..9010	2000	1200	1160	1080	
SHBF..9010	2040	1200	1160	1080	
SHBF..9010	2040	1300	1260	1180	
SHBF..9010	2095	1300	1260	1180	385/55 R22.5
SHBF..9010	2140	1400	1360	1280	
SHZF..9010	1820	900	860	780	275/70 R22.5
SHZF..9010	1880	980	---	860	
SHZF..9010	1920	980	940	860	

Max. inclination angle of the semitrailer under full load and lowest adjustable ride height $\pm 1^\circ$
 With trailing arm L1=500 / L2=310, bag pressures acc. to TE-1188.0 sheet 18
 With trailing arm L1=500 / L2=380, bag pressures acc. to TE-1188.0 sheet 15
 The hanger brackets, air bag supports and the frame must be reinforced so that the forces applied can be absorbed. See the current BPW installation instructions.



Only use authorised brake cylinders with internal seal max. Ø 191 mm



Line	Series	≈ adjustable ride height FH					Total spring travel (GF ¹⁾	Air bag	Shock absorber 02.37...	Hanger bracket				Shock absorber mount		Bracket ²⁾	Brake position
		for single axle	for axle units	min. FH with axle raised	Empty without air	Loaded without air				ST	C	E	G	D	F		
1	ALU	205-255	215-255	245	145	130	190	36K	..22.83.00	268	80	258	83	55	35	---	15°
2	ALU	235-290	245-290	275	175	160	220	36	..22.83.00	268	80	258	83	90	35	---	20°
3	ALU	260-300	270-300	300	200	185	220	36	..22.83.00	268	80	258	83	90	35	40	20°

¹⁾ Lifting heights acc. to TD-1242.0

²⁾ Bracket is not supplied

³⁾ The load rating of the tyre mentioned in the drawing is in no relation to the axle load capacity. It is dependent on the information from the tyre manufacturer.

⁴⁾ Note the maximum total width

Axle type	Track SP with axle type		Spring centre FM	Air bag centre BM V=80	Tyres recommended	
	..9010	..9008			10 bolts	8 bolts
SKHSF..9010/9008	2000	2005	1100	940	385/65 R22.5	385/65 R19.5 ³⁾
SKHSF..9010/9008	2040	2045	1100	940	385/55 R22.5	435/50 R19.5 ⁴⁾
SKHBF..9010	2000	--	1200	1040	385/65 R22.5	--
SKHBF..9010	2040	--	1200	1040	385/55 R22.5	
SKHBF..9010	2040	--	1300	1140	385/65 R19.5 ³⁾	
SKHBF..9010	2095	--	1300	1140	435/50 R19.5 ⁴⁾	
SKHBF..9010	2140	--	1400	1240	445/45 R19.5 ⁴⁾	
SKHZF..9010/9008	1820	1825	900	740	275/70 R22.5	265/70 R19.5
SKHZF..9010/9008	1880	1885	980	820		
SKHZF..9010/9008	1920	1925	980	820		

Max. inclination angle of the semitrailer under full load and lowest adjustable ride height ±1°

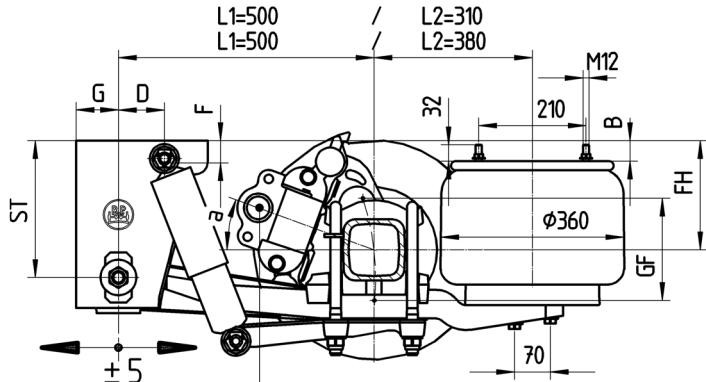
With trailing arm L1=500 / L2=310, bag pressures acc. to TE-1188.0 sheet 5

With trailing arm L1=500 / L2=380, bag pressures acc. to TE-1188.0 sheet 11

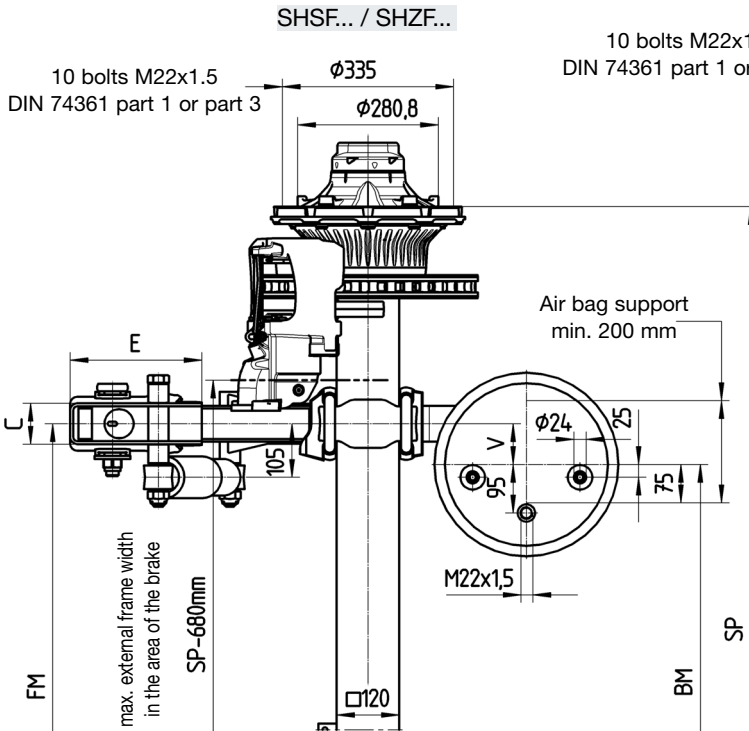
The hanger brackets, air bag supports and the frame must be reinforced so that the forces applied can be absorbed. See the current BPW installation instructions.



DIRECTION OF TRAVEL

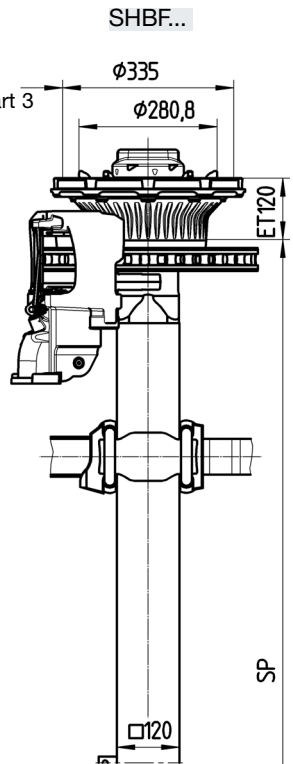


Only use authorised brake cylinders with internal seal max. Ø 186 mm



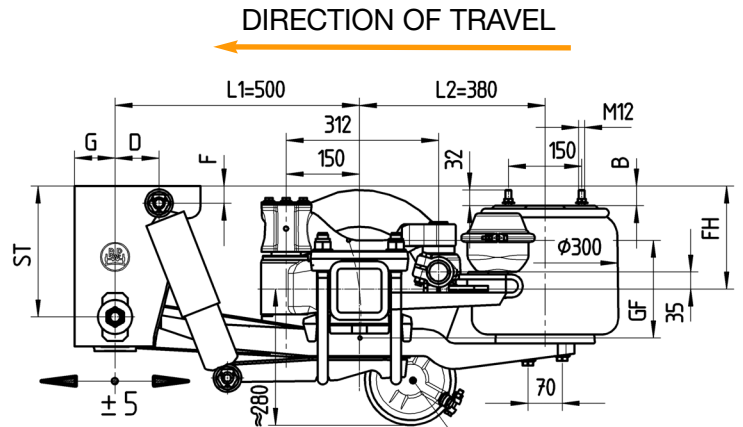
Line	Series	≈ adjustable ride height FH					Total spring travel (GF ¹⁾)	Air bag	Shock absorber 02.37...	Hanger bracket				Shock absorber mount		2) Bracket	3) Brake position	
		for single axles	for axle units	min. FH with axle raised	Empty without air	Loaded without air				ST	C	E	G	D	F			B
3)	2	ALU	235-290	245-290	275	175	160	220	36	..22.83.00	268	80	258	83	55	35	---	20°
3)	3	ALU	260-300	270-300	300	200	185	220	36	..22.83.00	268	80	258	83	55	35	40	20°

- 1) Lifting heights acc. to TD-1242.0
- 2) Bracket is not supplied
- 3) Versions with channel crossmember and aluminium hanger brackets are not possible in the ALU series with TSB 4309



Axle type	Track SP	Spring centre FM	Air bag centre BM	Tyres recommended
			V=80	
SHSF..9010	2010	1100	940	385/65 R22.5
SHSF..9010	2040	1100	940	
SHSF..9010	2040	1200	1040	
SHBF..9010	2000	1200	1040	
SHBF..9010	2040	1200	1040	
SHBF..9010	2040	1300	1140	
SHBF..9010	2095	1300	1140	
SHBF..9010	2140	1400	1240	275/70 R22.5
SHZF..9010	1820	900	740	
SHZF..9010	1880	980	820	
SHZF..9010	1920	980	820	

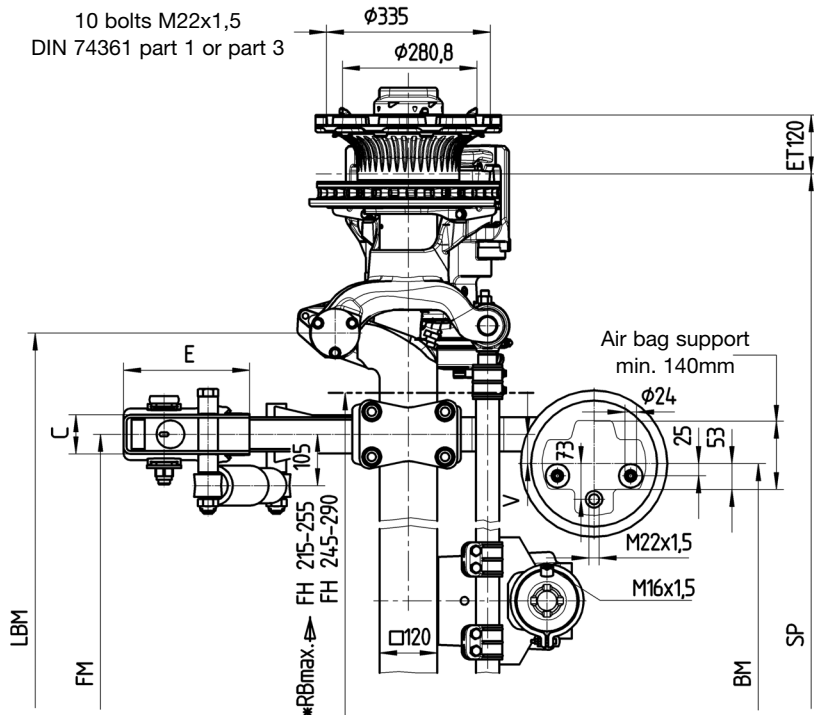
Max. inclination angle of the semitrailer under full load and lowest adjustable ride height ±1°
 With trailing arm L1=500 / L2=310, bag pressures acc. to TE-1188.0 sheet 5
 With trailing arm L1=500 / L2=380, bag pressures acc. to TE-1188.0 sheet 11
 The hanger brackets, air bag supports and the frame must be reinforced so that the forces applied can be absorbed. See the current BPW installation instructions.



Note the ground clearance in relation to the tyre size

Only use authorised brake cylinders with internal seal max. Ø 191 mm

10 bolts M22x1,5
DIN 74361 part 1 or part 3



Line	Series	≈ adjustable ride height FH				Total spring travel (GF ¹⁾)	Air bag	Shock absorber 02.37...	Hanger bracket				Shock absorber mount		Bracket ²⁾	
		for axle units	min. FH wit axle raised	Empty without air	Loaded without air				ST	C	E	G	D	F		B
4)	1	ALULL	215-255	245	145	130	190	30K	..22.83.00	268	80	258	83	55	35	---
4)	2	ALULL	245-290	275	175	160	220	30	..22.83.00	268	80	258	83	90	35	---
	3	ALULL	270-300	300	200	185	220	30	..22.83.00	268	80	258	83	90	35	40

1) Lifting heights acc. to TD-1242.0

2) Bracket is not supplied

3) The load rating of the tyre mentioned in the drawing is in no relation to the axle load capacity. It is dependent on the information from the tyre manufacturer.

4) Note the maximum frame RBmax.

Axle type	Track SP	Spring centre FM	Steering pin centre LBM	*RBmax.	Brake cylinder max.	Steering lock	Air bag centre BM		Tyres ³⁾ recommended
							V=20	V=60	
SKHBFH..LL 9010	2040	980	1395	1150	Typ 20	10°	940	860	385/65 R22,5
SKHBFH..LL 9010	2095	1005	1450	1205	Typ 24	12°	965	885	385/55 R22,5
SKHBFH..LL 9010	2140	1050	1495	1250	Typ 24	12°	1010	930	385/55 R22,5

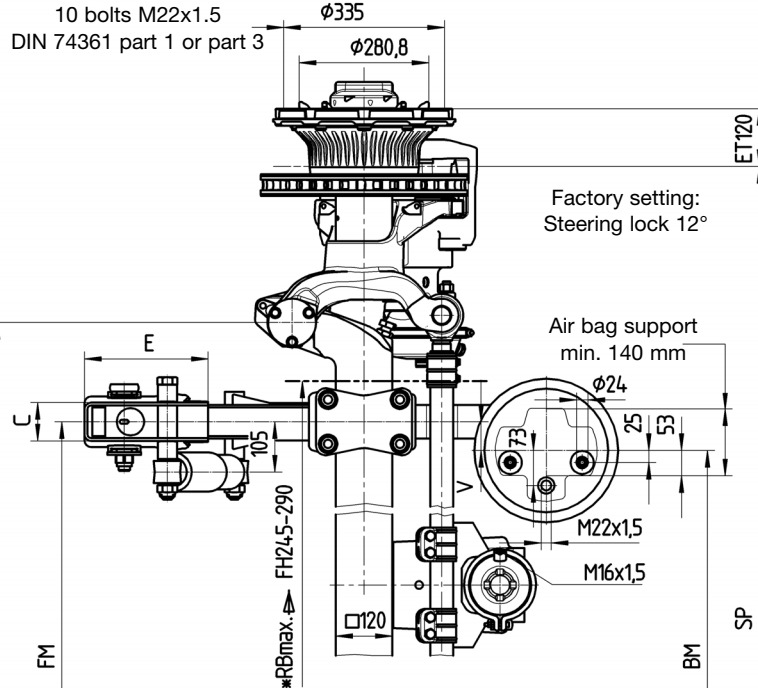
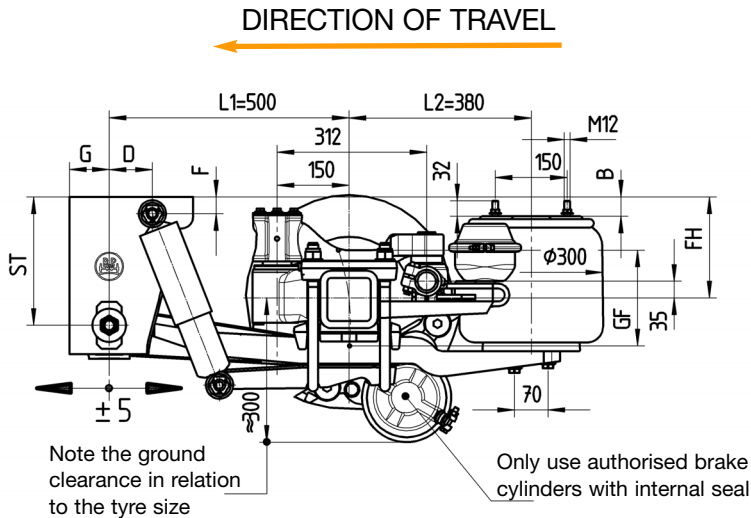
Max. inclination angle of the semitrailer under full load and lowest adjustable ride height ±1°

With trailing arm L1=500 / L2=380, bag pressures acc. to TE-1188.0 sheet 15

The hanger brackets, air bag supports and the frame must be reinforced so that the forces applied can be absorbed. See the current BPW installation instructions.

With axle ratio - rigid to steering axle of 1:1, when fitted with a lifting axle and when using central lubrication systems, the steering axle must be equipped with a steering damper.

Series	Draglink position	Steering damper set	Drawing
ALULL	312 / 35	05.872.00.59.0	04.00.510030



Line	Series	≈ adjustable ride height FH				Total spring travel (GF ¹⁾)	Air bag	Shock absorber 02.37...	Hanger bracket				Shock absorber mount		Bracket ²⁾	
		for axle units	min. FH with axle raised	Empty without air	Loaded without air				ST	C	E	G	D	F		B
3)	2	ALULL	245-290	275	175	160	220	30	..22.83.00	268	80	258	83	90	35	---
	3	ALULL	270-300	300	200	185	220	30	..22.83.00	268	80	258	83	90	35	40

- 1) Lifting heights acc. to TD-1242.0
- 2) Bracket is not supplied
- 3) Note the maximum frame RBmax.

Axle type	Track SP	Spring centre FM	Steering pin centre LBM	*RBmax.	Brake cylinder max.	Air bag centre BM		Tyres recommended
						V=20	V=60	
SHBFH..LL 9010	2040	980	1395	1150	Typ 24	940	860	385/65 R22.5
SHBFH..LL 9010	2095	1080	1450	1205	Typ 16	1040	960	385/55 R22.5
SHBFH..LL 9010	2140	1080	1495	1250	Typ 24	1040	960	

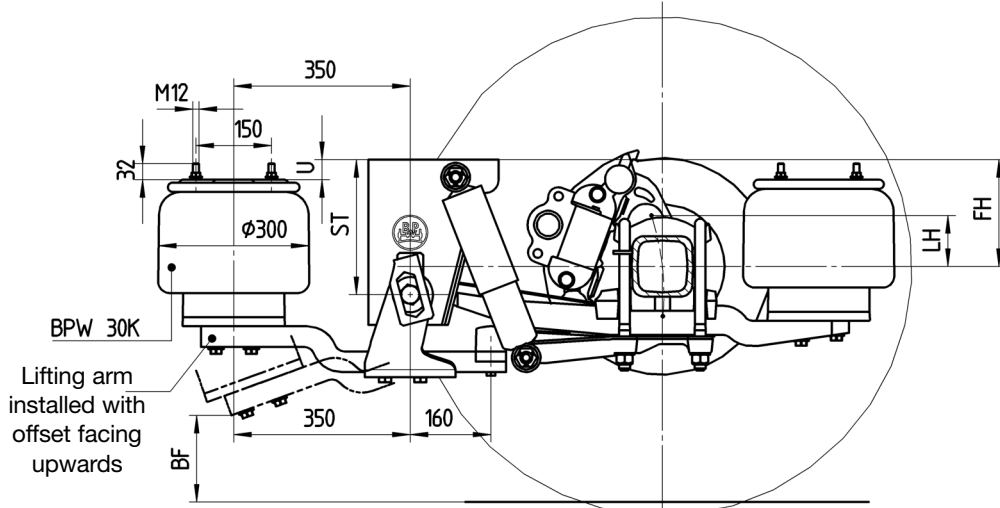
Max. inclination angle of the semitrailer under full load and lowest adjustable ride height $\pm 1^\circ$
 With trailing arm L1=500 / L2=380, bag pressures acc. to TE-1188.0 sheet 15
 The hanger brackets, air bag supports and the frame must be reinforced so that the forces applied can be absorbed. See the current BPW installation instructions.

With axle ratio - rigid to steering axle of 1:1, when fitted with a lifting axle and when using central lubrication systems, the steering axle must be equipped with a steering damper.

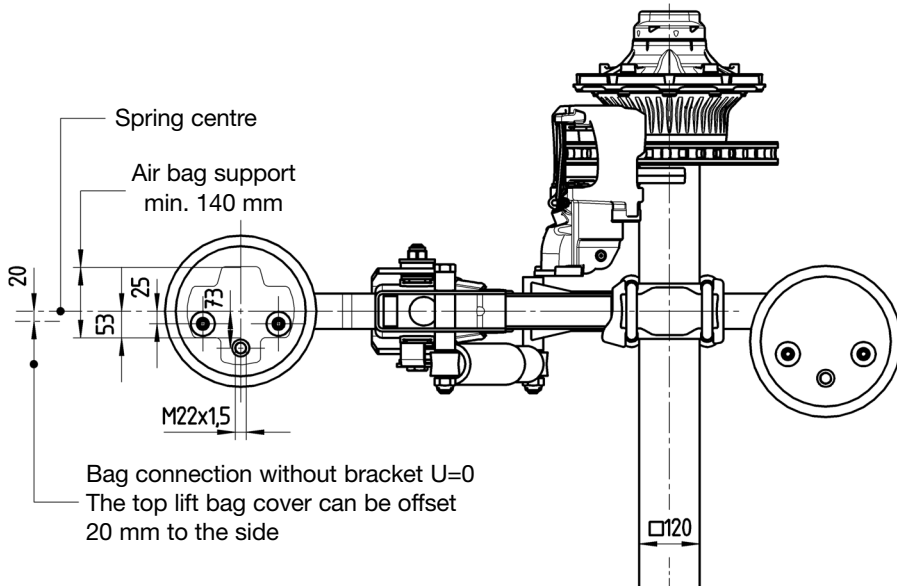
Series	Draglink position	Steering damper set	Drawing
ALULL	312 / 35	05.872.00.59.0	04.00.510030



DIRECTION OF TRAVEL
←



* Note the ground clearance in relation to the tyre size !

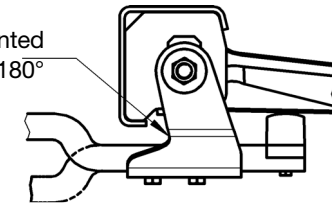


Suspension to drawing ALII-TSB.0 Sheet No.	≈ adjustable ride height FH		min. Lifting height LH	Support height ST	Ground clearance BF ¹⁾	Bracket U
	for axle units	min. FH with axle raised				
Sheet 15,15a Sheet 16, 16a	215-255	245	100	268	275	0 ²⁾
	245-290	275	100	268	325	0
	270-300	300	100	268	350	0

- ¹⁾ Ground clearance in relation to the set minimum ride height with the axle raised
- * Tyre: 385/65 R 22.5 (r_{stat} = 496)
- ²⁾ A 40mm tall bracket is possible as an alternative, bracket is not supplied.

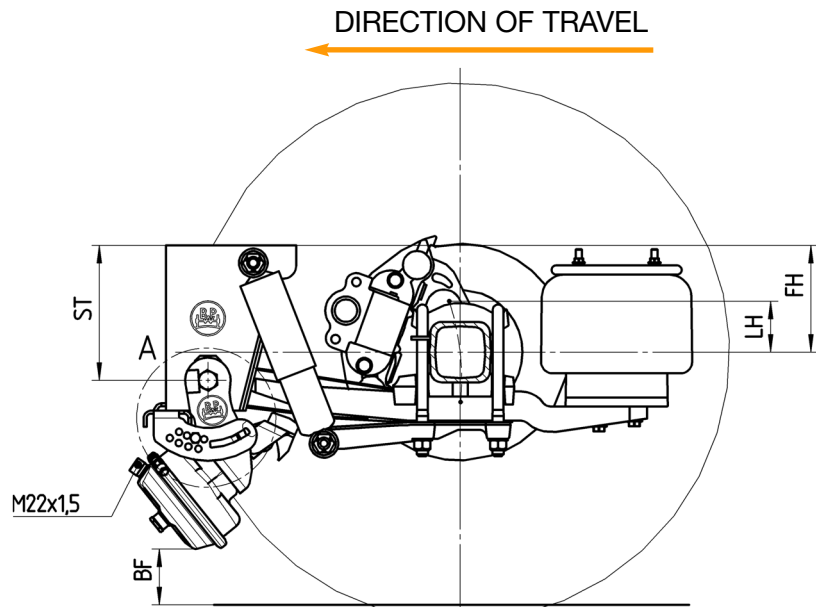
Version with channel crossmember

In version with channel crossmember, support mounted with recess turned through 180°

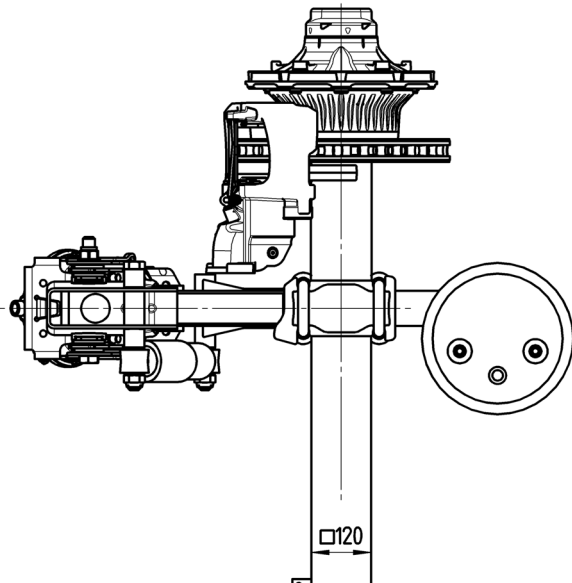


The air pressure for the lift bag must be limited to 5 bar at the reduction valve.

The hanger brackets, air bag supports and the frame must be reinforced so that the forces applied can be absorbed. See the current BPW installation instructions.



* Note the ground clearance in relation to the tyre size !



Suspension to drawing ALII-TSB.0 Sheet No.	≈ adjustable ride height FH		min. lifting height LH	Support height ST	Ground clearance BF ¹⁾	Stop position in version
	for axle units	min. FH with axle raised				
Sheet 15, 15a Sheet 16, 16a	215-255 ²⁾	245	100	268	143	7
	245-290 ²⁾	275	100	268	176	4
	270-300	300	100	268	205	8

¹⁾ Ground clearance in relation to the set minimum ride height with the axle raised

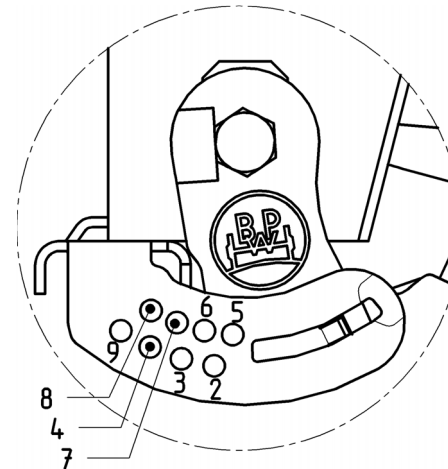
* Tyre: 385/65 R 22.5 ($r_{stat} = 496$)

In case of smaller tyres, it is necessary to check whether the double-sided axle lift can be used, according to the application.

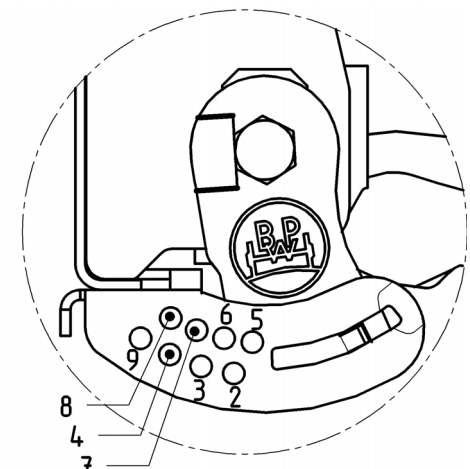
²⁾ Due to the low ground clearance, it is necessary to check whether the double-sided axle lift can be used, according to the application.

Detail A

Detail A Support configuration



Channel crossmember configuration



In the lifting and lowering version, the total spring travel must be limited by a shut-off valve.

Minimum air pressure for lifting the axle approx. 6 bar.

The hanger brackets, air bag supports and the frame must be reinforced so that the forces applied can be absorbed. See the current BPW installation instructions.