

SL-Air-spring axles

with disc brake

SL-SB.01

Sheet-no. I



Series	Air-spring axles and suspensions	Trailing arm	Axle type	Axle load	Ride heights mm (FH)	Suspensions to drawing SL-SB.01 Sheet-no.:
SLO		Single leaf	SHSF... SHZF...	9 to HD	400-560	Sheet 1
				12 to	415-600	Sheet 1a
		Double leaf		9 to HD	420-600	Sheet 2
				12 to	445-610	Sheet 2a
SLM		Single leaf	SHSF... SHZF...	9 to HD	305-470	Sheet 8
				12 to	345-500	Sheet 8a
		Double leaf		9 to HD	330-470	Sheet 9
				12 to	350-500	Sheet 9a
SLU		Single leaf	SKHSF.. SKHBF.. SKHZF..	9 to Long stroke	220-350	Sheet 15d
		Double leaf	SHSF.. SHZF..	9 to HD	250-370	Sheet 16
		Double leaf	SKHSF.. SKHBF.. SKHZF..	9 to Long stroke	235-345	Sheet 16d

Subject to change without notice / Rev 0 - 28.10.2005 / Konrad



Weight variations are within the permitted DIN tolerances for the respective production process, given in kg.
Weight axle SP = Track, FM = Spring centre

Suspensions to drawing SL-SB.01 Sheet-no.:	Line	Weight of air suspension parts	Weight of axle attachment	SP 1820		Sp 1820		SP 1880		SP 2000		SP 2040		SP 2040	
				FM 900	FM 980	FM 980	FM 980	FM 1100	FM 1160	FM 1200	FM 1300				
Sheet 1	1	148	34	304	304							315	315		
	2	151													
	3	159													
Sheet 1a	1	138	43	359		363	371	374							
	2	141													
	3	159													
Sheet 2	1	167	35	304	304							315	315		
	2	170													
	3	178													
Sheet 2a	1	157	44	359		363	371	374							
	2	160													
	3	178													
Sheet 8	1	153	34	304	304							315	315		
	2	155													
	3	167													
	4	167													
	5	167													
Sheet 8a	2	153	43	359		363	371	374							
	3	157													
	4	157													
	5	157													
Sheet 9	1	170	35	304	304							315	315		
	2	182													
	3	182													
	4	182													
Sheet 9a	1	168	44	359		363	371	374							
	2	172													
	3	172													
	4	172													

Subject to change without notice / Rev 0 - 28.10.2005 / Konrad

Additional weight per axle

ABS = 0,6 kg

Determining the total weight

Air suspension parts
 + Axle attachment
 + Axle
 + (Additional weight)
 = Total weight



Suspensions to drawing SL-SB.01 Sheet-no.:	Line	Weight variations are within the permitted DIN tolerances for the respective production process, given in kg. Weight axle SP = Track, FM = Spring centre										
		Weight of air suspension parts	Weight of axle attachment	FM 900		FM 980		FM 1100	FM 1200		FM 1300	
				Sp 1820	Sp 1880	Sp 1885	Sp 1925	Sp 2005	Sp 2010	Sp 2040	Sp 2075	Sp 2040
Sheet 15d	1	164	46			287	289	292	302		295	276
Sheet 16	1	174	47	304	307					315		
	2	186										
	3	186										
Sheet 16d	1	206	42			287	289	292	302		295	276

Subject to change without notice / Rev 0 - 28.10.2005 / Konrad

Additional weight per axle

ABS = 0,6 kg

Determining the total weight

- Air suspension parts
- + Axle attachment
- + Axle
- + (Additional weight)
- = Total weight

SL-Height of centre of gravity

Air-spring axles with disc brake

SL-SB.01

Sheet-no. III



Series	Suspensions to drawing SL-SB.01 Sheet-no:	Trailing arm 05.082...	Leaf thickness	L1	L2	Axle load kg	Height of centre of gravity max. Spring centre					
							900	980	1100	1160	1200	1300
SLO	Sheet 1	...13.75.1	1 x 57	500	380	9000 kg	2550	2750			3250	3500
		...14.16.0			335	9000 kg	2550	2750			3250	3500
	Sheet 1a	...13.75.1	1 x 57	500	380	10000 kg	2400	2550	2800	2950		
						11000 kg	2200	2350	2550	2650		
						12000 kg	2050	2150	2350	2450		
		...14.16.0			335	10000 kg	2400	2550	2800	2950		
						11000 kg	2200	2350	2550	2650		
						12000 kg	2050	2150	2350	2450		
	Sheet 2	...12.68.0	2 x 43	500	380	9000 kg	2700	2900			3450	3650
	Sheet 2a	...12.68.0	2 x 43	500	380	10000 kg	2500	2600	2850	3000		
11000 kg						2250	2400	2600	2700			
12000 kg						2050	2200	2400	2500			
SLM	Sheet 8	...13.83.1	1 x 57	500	380	9000 kg	2550	2750			3250	3500
	Sheet 8a	...13.83.1	1 x 57	500	380	10000 kg	2400	2550	2800	2950		
						11000 kg	2200	2350	2550	2650		
						12000 kg	2050	2150	2350	2450		
	Sheet 9	...13.33.0	2 x 43	500	380	9000 kg	2700	2900			3450	3650
	Sheet 9a	...13.33.0	2 x 43	500	380	10000 kg	2500	2600	2850	3000		
						11000 kg	2250	2400	2600	2700		
						12000 kg	2050	2200	2400	2500		
SLU	Sheet 15d	...13.78.0	1 x 58	620	365	9000 kg		2100	2300		2500	2700
	Sheet 16	...12.83.0	2 x 43	550	380	9000 kg	2250	2550			3350	
	Sheet 16d	...13.63.0	2 x 51	690	310	9000 kg		2400	2950		3450	3950

Subject to change without notice / Rev 0 - 28.10.2005 / Konrad

Calculation reference:

0,4 g transverse acceleration lateral body tilt approx. 3.5 degrees without taking into consideration the tilt limit and the tyre deflection.

SL-Air suspension hanger brackets

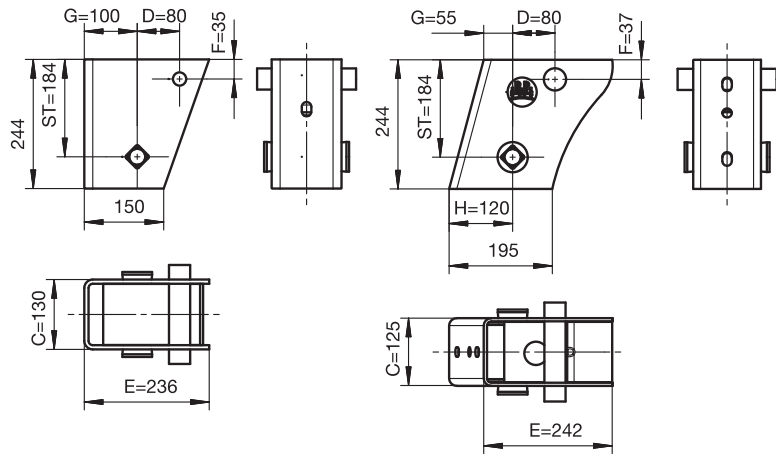
for Suspensions to SB.01

SL-SB.01

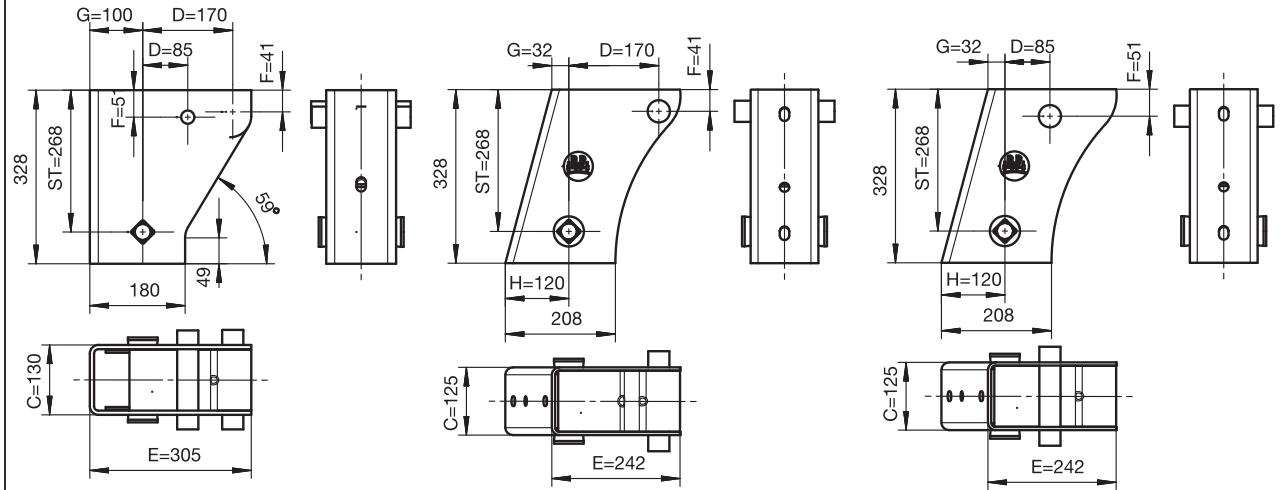
Sheet-no. IV



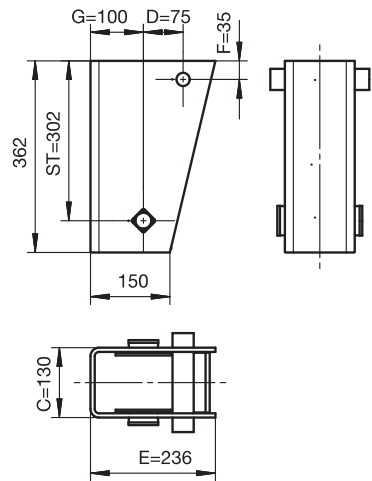
Support height ST=184



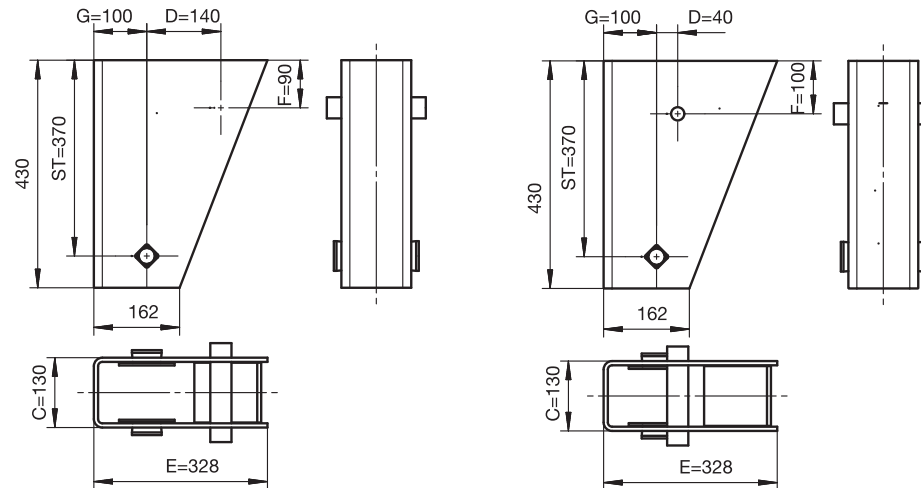
Support height ST=268



Support height ST=302



Support height ST=370



Note:
The frame must be reinforced so that the forces applied can be absorbed. See the current BPW installation instructions.

Series SLO

HD-Air-spring axles with disc brake SB 4309

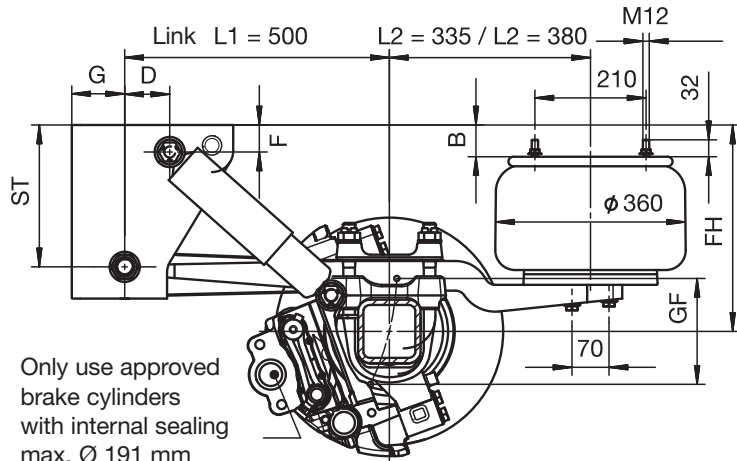
n 120 Axle load 9000 kg

Ride height 400-560 mm

for trailer and semi-trailer

SL-SB.01

Sheet-no. 1



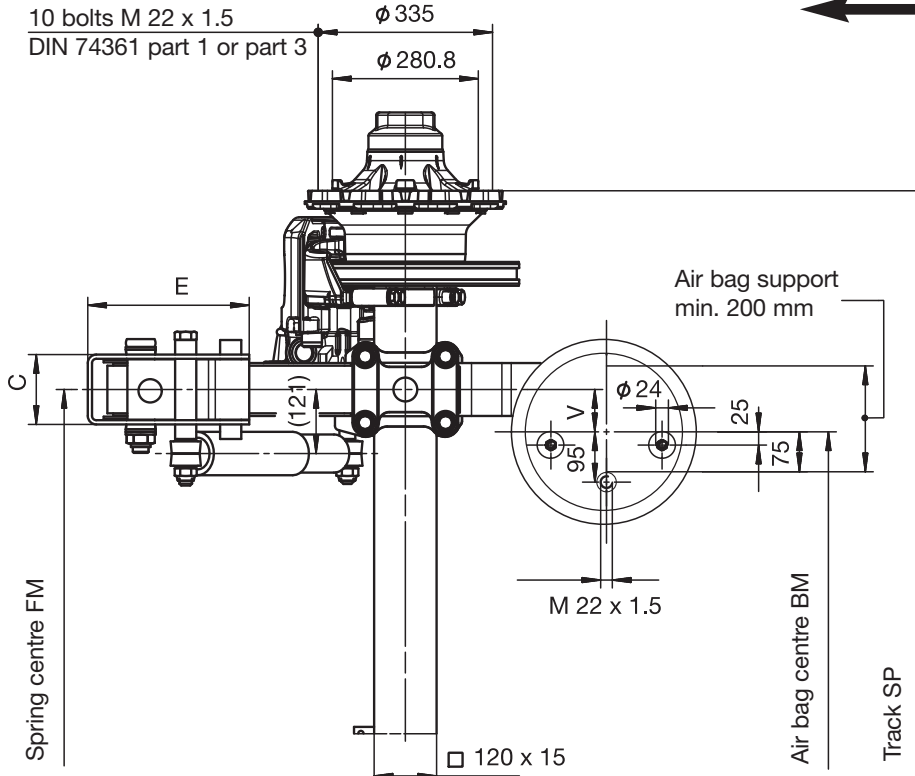
Line	Series	~ adjustable ride height FH					Total spring travel (GF ¹⁾)	Air bag	Shock absorber 02.37...	Hanger bracket				Shock absorber mount		Console ²⁾
		for single axles	for axle units	min. FH with axle raised	Empty without air	Loaded without air				ST	C	E	G	D	F	
1	SLO	400-450	410-450	440	340	325	190	36K	..22.14.00 ³⁾	268	130	305	100	85	51	-
2	SLO	425-480	435-480	465	365	350	220	36	..22.14.00 ³⁾	268	130	305	100	85	51	-
3	SLO	500-560	510-560	540	440	425	220	36	..02.92.00	370	130	328	100	140	90	60

¹⁾ Lifting heights acc. to TD-1242.0

²⁾ The bracket is not included in supplied package

³⁾ HD shock absorber 02.3722.04.00 acc. to table
Recommended use: As specified in current BPW warranty documents

DIRECTION OF TRAVEL



Axle type	Track SP	Spring centre FM	Air bag centre BM V=80	Tyres recommended
SHSFSLO 9010	2040	1200	1040	385/65 R 22.5
		1300	1140	
SHZFSLO 9010	1820	900	740	275/70 R 22.5
		980	820	

max. inclination angle of the semi-trailer under full load and lowest adjustable ride height ±1°

With trailing arm L1=500 / L2=380, bag pressures acc. to TE-1188.0 sheet 11
With trailing arm L1=500 / L2=335, bag pressures acc. to TE-1188.0 sheet 31

The hanger brackets, air bag supports and the frame must be reinforced so that the forces applied can be absorbed.
See the current BPW installation instructions.

Series SLO

Air-spring axles with disc brake SB 4345

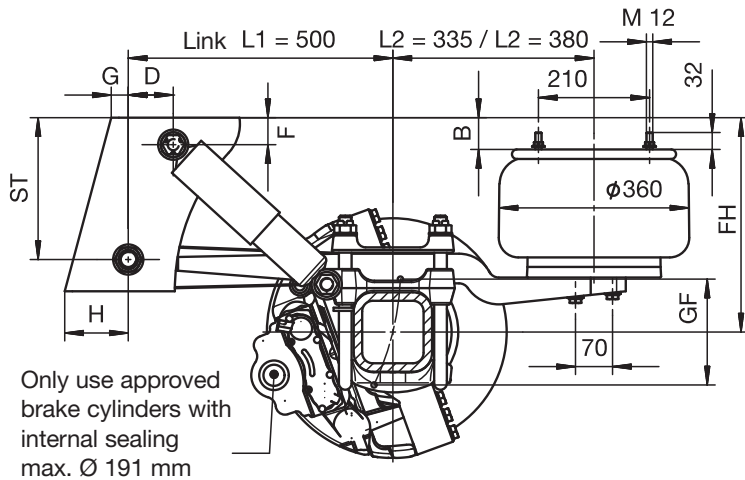
n 150 Axle load 12000 kg

Ride height 415-600 mm

for trailer and semi-trailer

SL-SB.01

Sheet-no. 1a

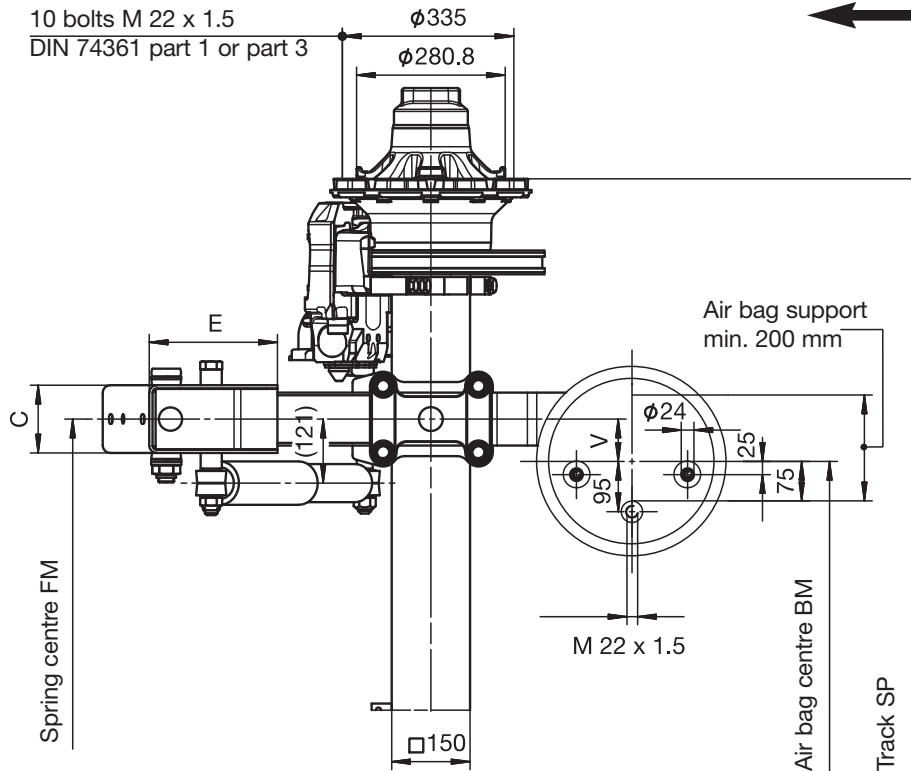


Line	Series	~ adjustable ride height FH					Total spring travel GF ¹⁾	Air bag	Shock absorber 02.37...	Hanger bracket					Shock absorber mount		Console ²⁾
		for single axles	for axle units	min. FH with axle raised	Empty without air	Loaded without air				ST	C	E	G	H	D	F	
1	SLO	415-455	425-455	455	355	340	190	36K	..22.14.00	268	125	242	32	120	85	51	-
2	SLO	445-500	455-500	485	385	370	220	36	..22.14.00	268	125	242	32	120	85	51	-
3	SLO	520-600	530-600	560	460	445	220	36	..02.92.00	370	130	328	100	100	140	90	60

¹⁾ Lifting heights acc. to TD-1242.0

²⁾ The bracket is not included in supplied package

10 bolts M 22 x 1.5
DIN 74361 part 1 or part 3



DIRECTION OF TRAVEL

Axle type	Track SP	Spring centre FM	Air bag centre BM V=80	Tyres ³⁾ recommended
SHSFSLO 12010	2000	1100	940	425/65 R 22.5
	2040	1160	1000	445/65 R 22.5
SHZFSLO 12010	1820	900	740	275/70 R 22.5
	1880	980	820	295/80 R 22.5 ⁴⁾

³⁾ The load rating of the tyre entered in the drawing is unrelated to the axle load capacity.

It is dependent on the information from the tyre manufacturer.

⁴⁾ Tyre 295/80 R 22.5 only possible with Track=1820, Spring centre=900

Recommended use for BPW chassis and suspensions:
As specified in current BPW warranty documents

max. inclination angle of the semi-trailer under full load and lowest adjustable ride height $\pm 1^\circ$

With trailing arm L1=500 / L2=380, bag pressures acc. to TE-1188.0 sheet 11
With trailing arm L1=500 / L2=335, bag pressures acc. to TE-1188.0 sheet 31

The hanger brackets, air bag supports and the frame must be reinforced so that the forces applied can be absorbed.
See the current BPW installation instructions.

Series SLO

HD-Air-spring axles with disc brake SB 4309

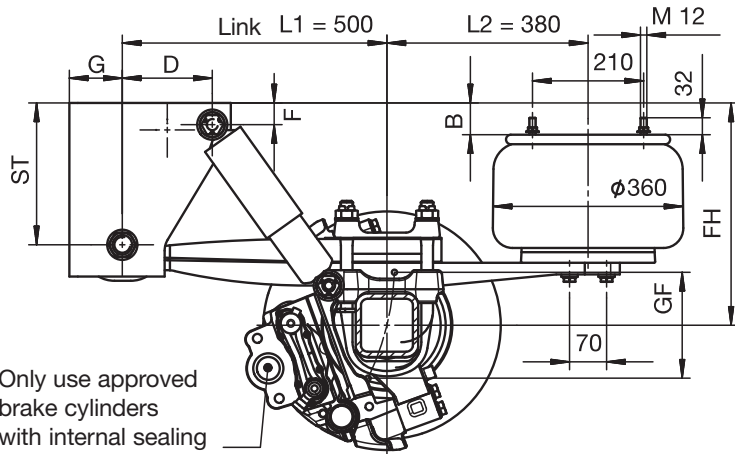
n 120 Axle load 9000 kg

Ride height 420-600 mm

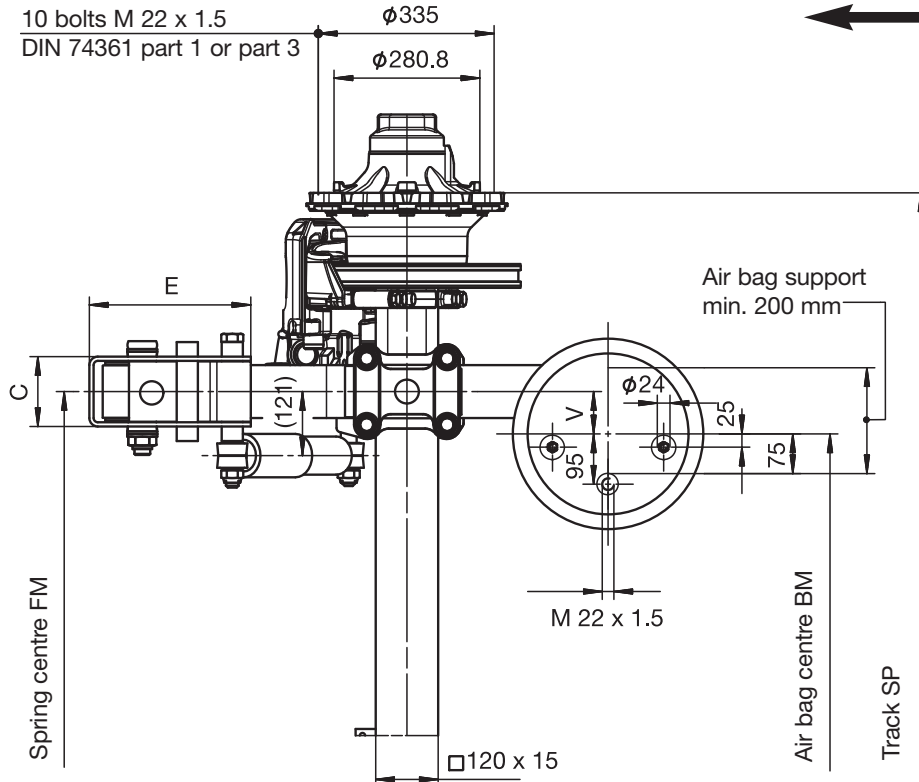
for trailer and semi-trailer

SL-SB.01

Sheet-no. 2



10 bolts M 22 x 1.5
DIN 74361 part 1 or part 3



Line	Series	~ adjustable ride height FH					Total spring travel (GF ¹⁾)	Air bag	Shock absorber 02.37...	Hanger bracket				Shock absorber mount		Console ²⁾
		for single axles	for axle units	min. FH with axle raised	Empty without air	Loaded without air				ST	C	E	G	D	F	
1	SLO	420-460	430-460	460	360	345	190	36K	..22.14.00 ³⁾	268	130	305	100	170	41	-
2	SLO	450-490	460-490	490	390	375	220	36	..22.14.00 ³⁾	268	130	305	100	170	41	-
3	SLO	530-600	540-600	570	470	455	220	36	..02.92.00	370	130	328	100	140	90	60

¹⁾ Lifting heights acc. to TD-1242.0

²⁾ The bracket is not included in supplied package

³⁾ HD shock absorber 02.3722.04.00 acc. to table

Recommended use: As specified in current BPW warranty documents

Axle type	Track SP	Spring centre FM	Air bag centre BM V=80	Tyres recommended
SHSFSLO 9010	2040	1200	1040	385/65 R 22.5
		1300	1140	
SHZFSLO 9010	1820	900	740	275/70 R 22.5
		980	820	

max. inclination angle of the semi-trailer under full load and lowest adjustable ride height ±1°

With trailing arm L1=500 / L2=380, bag pressures acc. to TE-1188.0 sheet 11

The hanger brackets, air bag supports and the frame must be reinforced so that the forces applied can be absorbed. See the current BPW installation instructions.

Series SLO

Air-spring axles with disc brake SB 4345

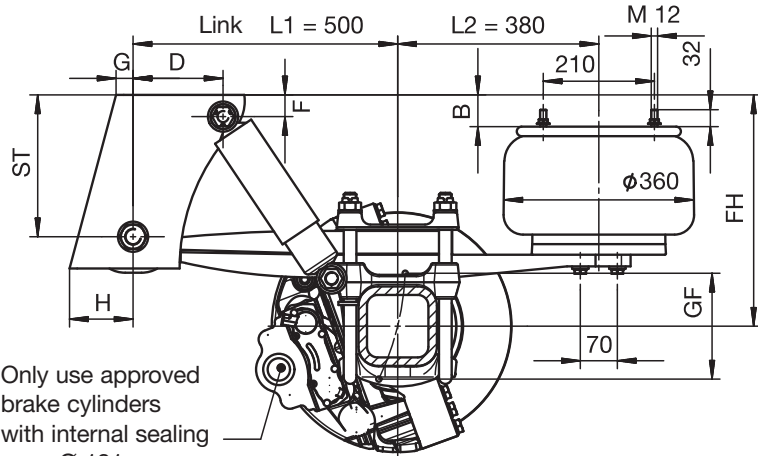
n 150 Axle load 12000 kg

Ride height 445-610 mm

for trailer and semi-trailer

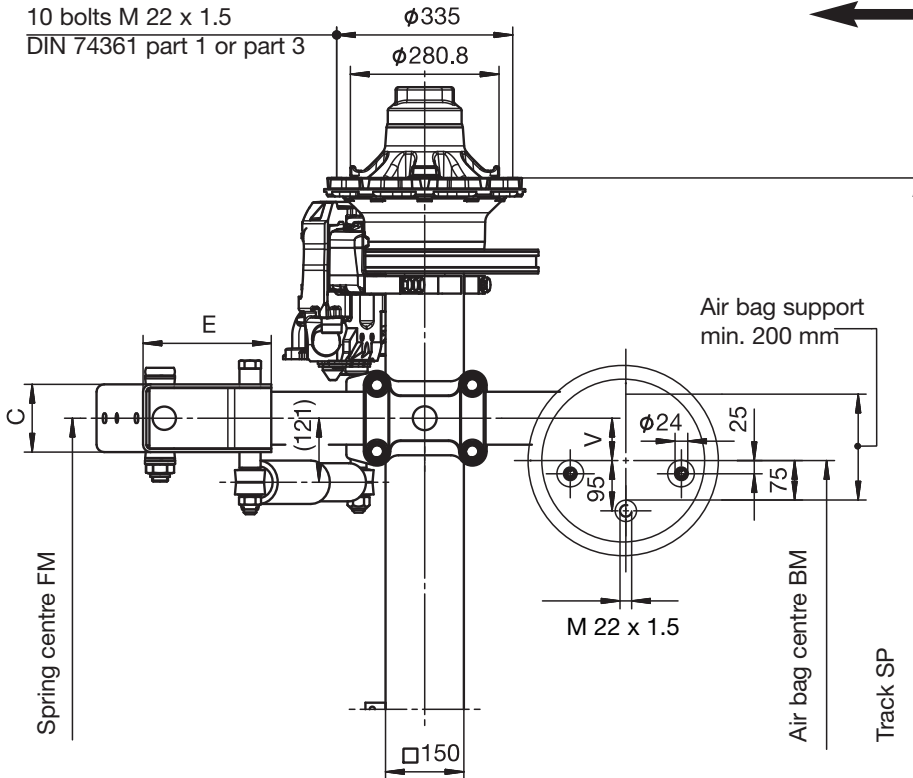
SL-SB.01

Sheet-no. 2a



Only use approved brake cylinders with internal sealing max. Ø 191 mm

10 bolts M 22 x 1.5
 DIN 74361 part 1 or part 3



DIRECTION OF TRAVEL



Line	Series	~ adjustable ride height FH					Total spring travel GF ¹⁾	Air bag	Shock absorber 02.37...	Hanger bracket					Shock absorber mount		Console ²⁾
		for single axles	for axle units	min. FH with axle raised	Empty without air	Loaded without air				ST	C	E	G	H	D	F	
1	SLO	445-490	455-490	485	385	370	190	36K	..22.14.00	268	125	242	32	120	85	51	-
2	SLO	475-520	485-520	515	415	400	220	36	..22.14.00	268	125	242	32	120	170	41	-
3	SLO	520-610	560-610	590	490	475	220	36	..02.92.00	370	130	328	100	100	140	90	60

¹⁾ Lifting heights acc. to TD-1242.0

²⁾ The bracket is not included in supplied package

Axle type	Track SP	Spring centre FM	Air bag centre BM V=80	Tyres ³⁾ recommended
SHSFSLO 12010	2000	1100	940	425/65 R 22.5 445/65 R 22.5
	2040	1160	1000	
SHZFSLO 12010	1820	900	740	275/70 R 22.5 295/80 R 22.5 ⁴⁾
	1880	980	820	

³⁾ The load rating of the tyre entered in the drawing is unrelated to the axle load capacity.

It is dependent on the information from the tyre manufacturer.

⁴⁾ Tyre 295/80 R 22.5 only possible with Track=1820, Spring centre=900

Recommended use for BPW chassis and suspensions:
 As specified in current BPW warranty documents

max. inclination angle of the semi-trailer under full load and lowest adjustable ride height ±1°

With trailing arm L1=500 / L2=380, bag pressures acc. to TE-1188.0 sheet 11

The hanger brackets, air bag supports and the frame must be reinforced so that the forces applied can be absorbed.

See the current BPW installation instructions.

Series SLM

HD-Air-spring axles with disc brake SB 4309

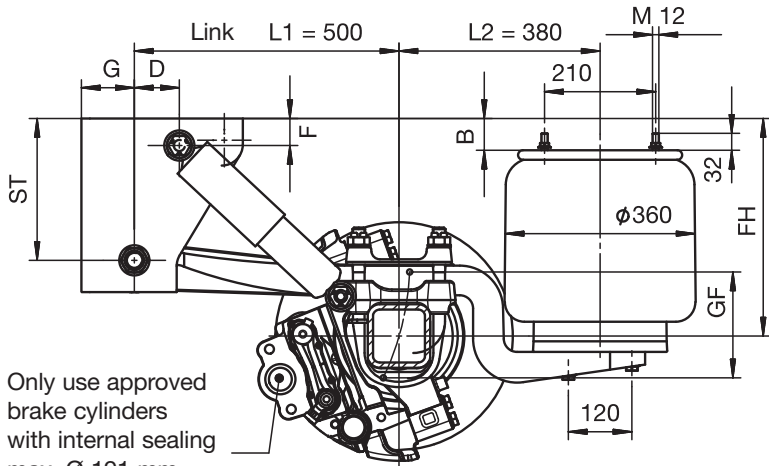
n 120 Axle load 9000 kg

Ride height 305-470 mm

for trailer and semi-trailer

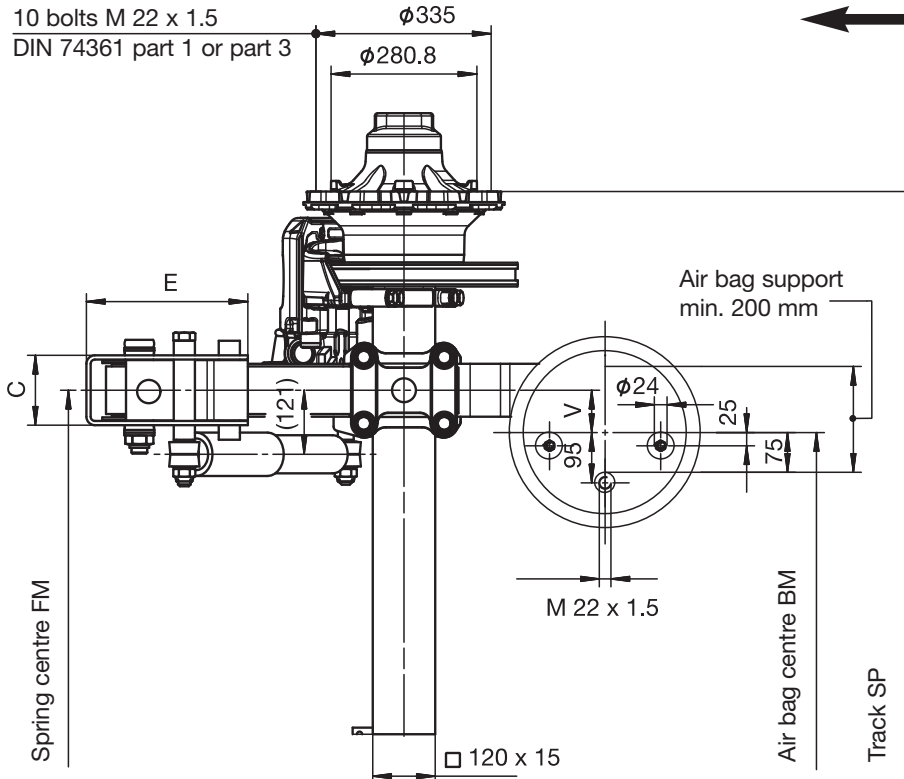
SL-SB.01

Sheet-no. 8



Only use approved brake cylinders with internal sealing max. Ø 191 mm

10 bolts M 22 x 1.5
DIN 74361 part 1 or part 3



Line	Series	~ adjustable ride height FH					Total spring travel (GF ¹⁾)	Air bag	Shock absorber ⁴⁾ 02.37...	Hanger bracket				Shock absorber mount		Console ²⁾
		for single axles	for axle units	min. FH with axle raised	Empty without air	Loaded without air				ST	C	E	G	D	F	
1 ³⁾	SLM	305-355	315-355	345	245	230	190	36K	..22.14.00	184	130	236	100	80	37	-
2 ³⁾	SLM	330-380	340-380	370	270	255	220	36	..22.14.00	184	130	236	100	80	37	-
3	SLM	360-410	370-415	400	300	285	220	36	..22.14.00	268	130	305	100	85	51	-
4	SLM	400-450	410-450	440	340	325	220	36	..22.14.00	268	130	305	100	85	51	60
5	SLM	420-470	430-470	460	360	345	220	36	..22.14.00	268	130	305	100	170	41	100

DIRECTION OF TRAVEL



¹⁾ Lifting heights acc. to TD-1242.0

²⁾ The bracket is not included in supplied package

³⁾ Only suitable for semi-trailer

⁴⁾ HD shock absorber 02.3722.04.00 acc. to table
Recommended use: As specified in current BPW warranty documents

Axle type	Track SP	Spring centre FM	Air bag centre BM V=80	Tyres recommended
SHSFSLM 9010	2040	1200	1040	385/65 R 22.5
		1300	1140	
SHZFSLM 9010	1820	900	740	275/70 R 22.5
		980	820	

max. inclination angle of the semi-trailer under full load and lowest adjustable ride height ±1°

With trailing arm L1=500 / L2=380, bag pressures acc. to TE-1188.0 sheet 11

The hanger brackets, air bag supports and the frame must be reinforced so that the forces applied can be absorbed.
See the current BPW installation instructions.

Series SLM

Air-spring axles with disc brake SB 4345

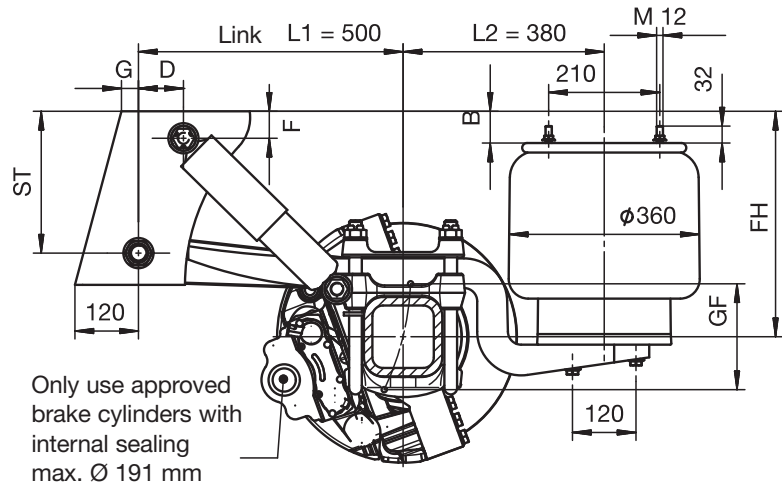
n 150 Axle load 12000 kg

Ride height 345-500 mm

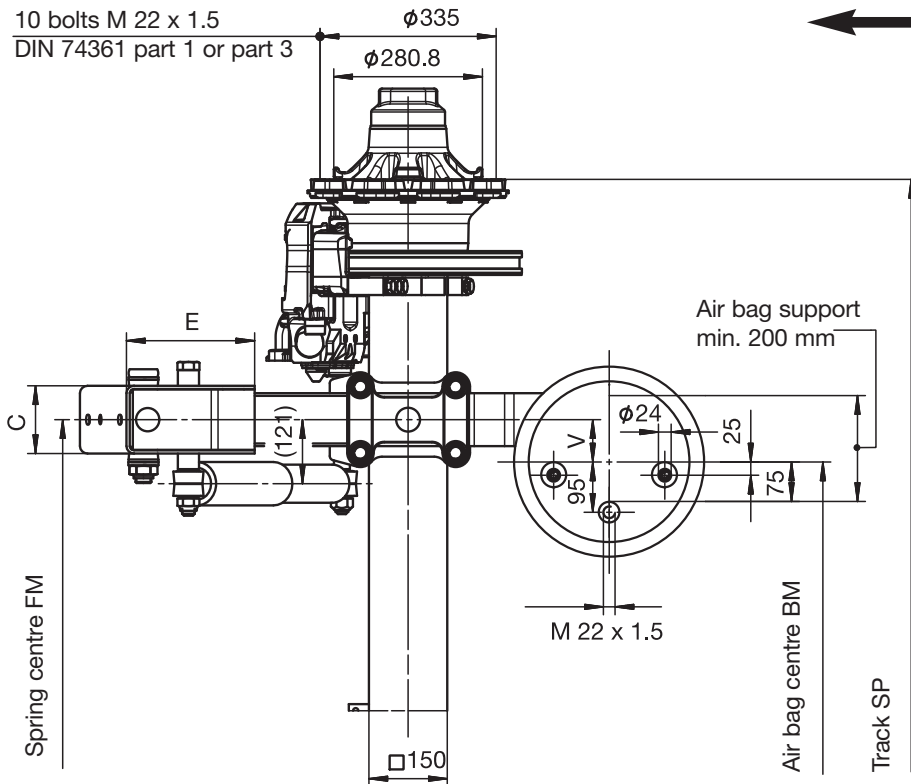
for trailer and semi-trailer

SL-SB.01

Sheet-no. 8a



10 bolts M 22 x 1.5
DIN 74361 part 1 or part 3



Line	Series	~ adjustable ride height FH					Total spring travel GF ¹⁾	Air bag	Shock absorber 02.37...	Hanger bracket				Shock absorber mount		Console ²⁾
		for single axles	for axle units	min. FH with axle raised	Empty without air	Loaded without air				ST	C	E	G	D	F	
2 ³⁾	SLM	345-415	355-415	385	285	270	220	36	..22.14.00	184	125	242	55	80	37	-
3	SLM	375-445	385-445	415	315	300	220	36	..22.14.00	268	125	242	32	85	51	-
4	SLM	410-460	420-460	450	350	335	220	36	..22.14.00	268	125	242	32	85	51	60
5	SLM	435-500	445-500	475	375	360	220	36	..22.14.00	268	125	242	32	85	51	100

¹⁾ Lifting heights acc. to TD-1242.0

²⁾ The bracket is not included in supplied package

³⁾ Only suitable for semi-trailer

Axle type	Track SP	Spring centre FM	Air bag centre BM V=80	Tyres ⁴⁾ recommended
SHSFSLM 12010	2000	1100	940	425/65 R 22.5
	2040	1160	1000	445/65 R 22.5
SHZFSLM 12010	1820	900	740	275/70 R 22.5
	1880	980	820	295/80 R 22.5 ⁴⁾

⁴⁾ The load rating of the tyre entered in the drawing is unrelated to the axle load capacity.

It is dependent on the information from the tyre manufacturer.

⁵⁾ Tyre 295/80 R 22.5 only possible with Track=1820, Spring centre=900

Recommended use for BPW chassis and suspensions:
As specified in current BPW warranty documents

max. inclination angle of the semi-trailer under full load and lowest adjustable ride height ±1°

With trailing arm L1=500 / L2=380, bag pressures acc. to TE-1188.0 sheet 11

The hanger brackets, air bag supports and the frame must be reinforced so that the forces applied can be absorbed.

See the current BPW installation instructions.

Series SLM

HD-Air-spring axles with disc brake SB 4309

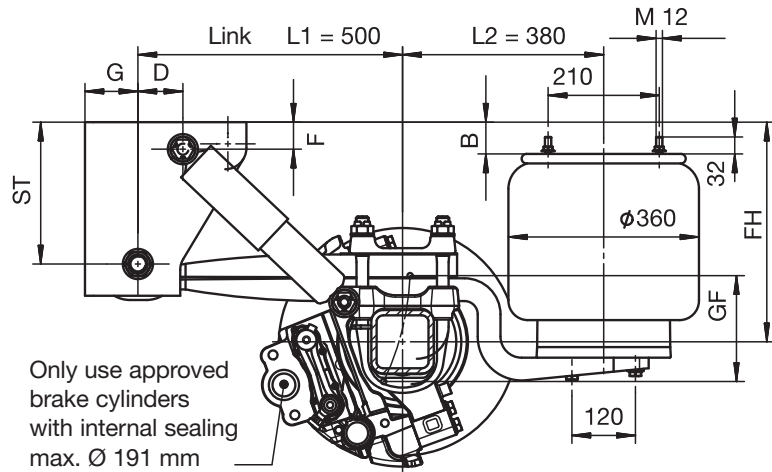
n 120 Axle load 9000 kg

Ride height 330-470 mm

for trailer and semi-trailer

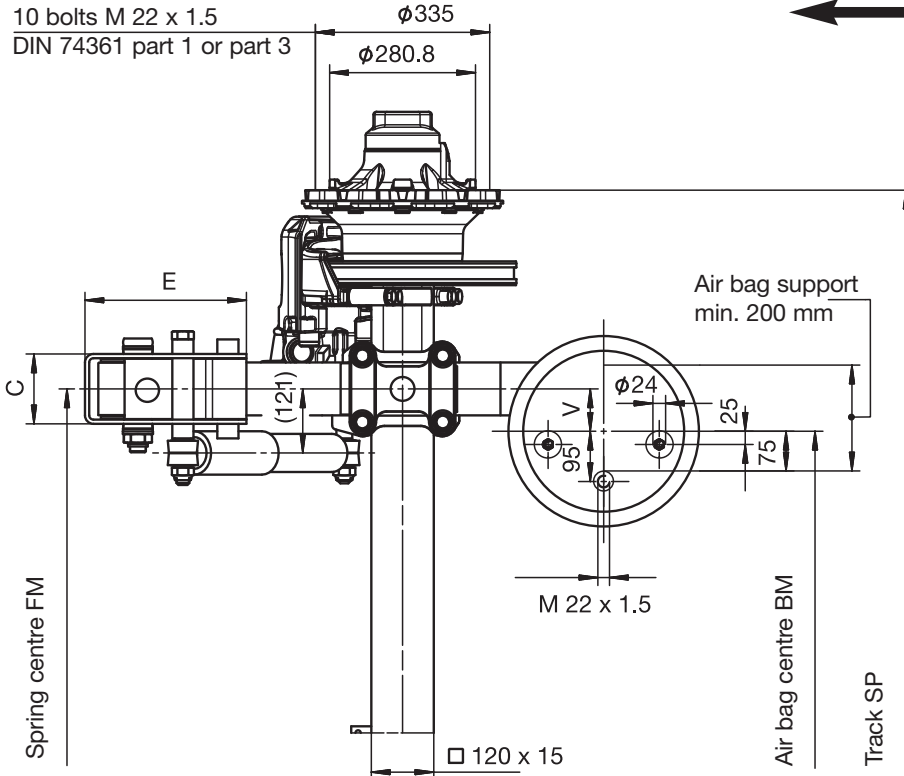
SL-SB.01

Sheet-no. 9



Only use approved brake cylinders with internal sealing max. Ø 191 mm

10 bolts M 22 x 1.5
DIN 74361 part 1 or part 3



DIRECTION OF TRAVEL



Line	Series	~ adjustable ride height FH					Total spring travel GF ¹⁾	Air bag	Shock absorber ⁴⁾ 02.37...	Hanger bracket				Shock absorber mount		Console ²⁾
		for single axles	for axle units	min. FH with axle raised	Empty without air	Loaded without air				ST	C	E	G	D	F	
1 ³⁾	SLM	330-380	340-380	370	270	255	220	36	..22.14.00	184	130	236	100	80	37	-
2	SLM	360-415	370-415	400	300	285	220	36	..22.14.00	268	130	305	100	85	51	-
3	SLM	400-450	410-450	440	340	325	220	36	..22.14.00	268	130	305	100	85	51	60
4	SLM	420-470	430-470	460	360	345	220	36	..22.14.00	268	130	305	100	170	41	100

¹⁾ Lifting heights acc. to TD-1242.0

²⁾ The bracket is not included in supplied package

³⁾ Only suitable for semi-trailer

⁴⁾ HD shock absorber 02.3722.04.00 acc. to table
Recommended use: As specified in current BPW warranty documents

Axle type	Track SP	Spring centre FM	Air bag centre BM V=80	Tyres recommended
SHSFSLM 9010	2040	1200	1040	385/65 R 22.5
		1300	1140	
SHZFSLM 9010	1820	900	740	275/70 R 22.5
		980	820	

max. inclination angle of the semi-trailer under full load and lowest adjustable ride height ±1°

With trailing arm L1=500 / L2=380, bag pressures acc. to TE-1188.0 sheet 11

The hanger brackets, air bag supports and the frame must be reinforced so that the forces applied can be absorbed.

See the current BPW installation instructions.

Series SLM

Air-spring axles with disc brake SB 4345

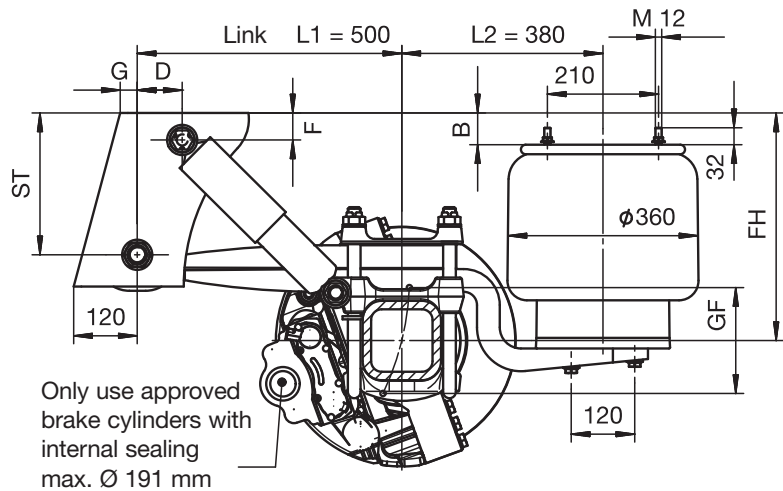
n 150 Axle load 12000 kg

Ride height 350-500 mm

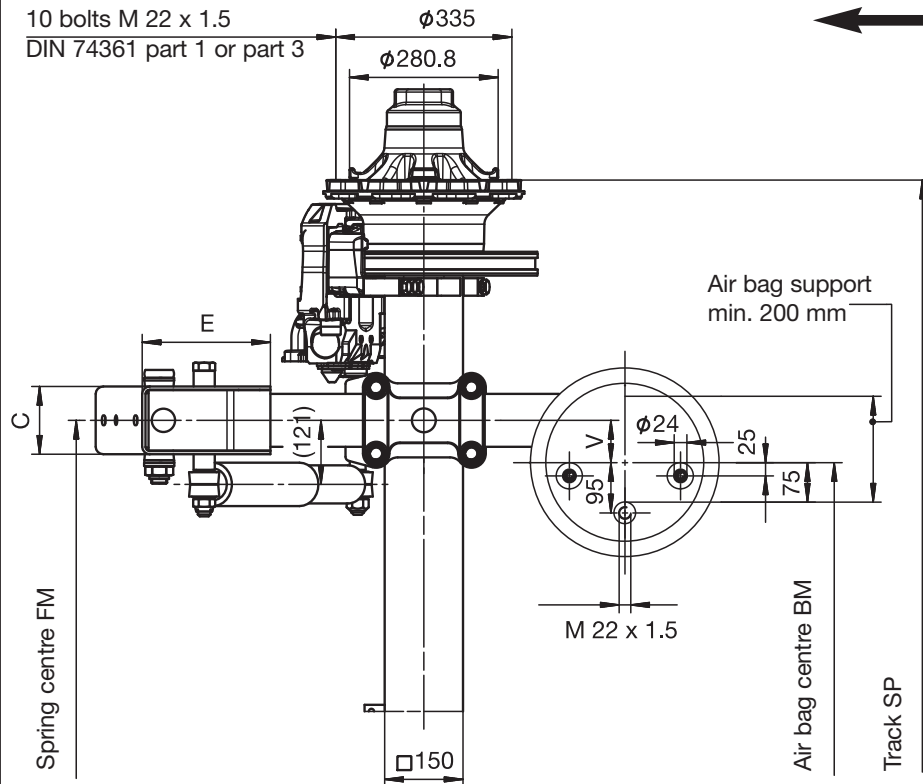
for trailer and semi-trailer

SL-SB.01

Sheet-no. 9a



10 bolts M 22 x 1.5
DIN 74361 part 1 or part 3



DIRECTION OF TRAVEL



Line	Series	~ adjustable ride height FH					Total spring travel GF ¹⁾	Air bag	Shock absorber 02.37...	Hanger bracket				Shock absorber mount		Console ²⁾
		for single axles	for axle units	min. FH with axle raised	Empty without air	Loaded without air				ST	C	E	G	D	F	
1 ³⁾	SLM	350-410	360-410	390	290	275	220	36	..22.14.00	184	125	242	55	80	37	-
2	SLM	380-440	390-440	420	320	305	220	36	..22.14.00	268	125	242	32	85	51	-
3	SLM	410-460	420-460	450	350	335	220	36	..22.14.00	268	125	242	32	85	51	60
4	SLM	440-500	450-500	480	380	365	220	36	..22.14.00	268	125	242	32	85	51	100

¹⁾ Lifting heights acc. to TD-1242.0

²⁾ The bracket is not included in supplied package

³⁾ Only suitable for semi-trailer

Axle type	Track SP	Spring centre FM	Air bag centre BM V=80	Tyres ⁴⁾ recommended
SHSFSLM 12010	2000	1100	940	425/65 R 22.5 445/65 R 22.5
	2040	1160	1000	
SHZFSLM 12010	1820	900	740	275/70 R 22.5 295/80 R 22.5 ⁵⁾
	1880	980	820	

⁴⁾ The load rating of the tyre entered in the drawing is unrelated to the axle load capacity. It is dependent on the information from the tyre manufacturer.

⁵⁾ Tyre 295/80 R 22.5 only possible with Track=1820, Spring centre=900

Recommended use for BPW chassis and suspensions:
As specified in current BPW warranty documents

max. inclination angle of the semi-trailer under full load and lowest adjustable ride height ±1°
With trailing arm L1=500 / L2=380, bag pressures acc. to TE-1188.0 sheet 11
The hanger brackets, air bag supports and the frame must be reinforced so that the forces applied can be absorbed.
See the current BPW installation instructions.

Series SLU

Long-stroke air suspension axles with disc brake SB 3745

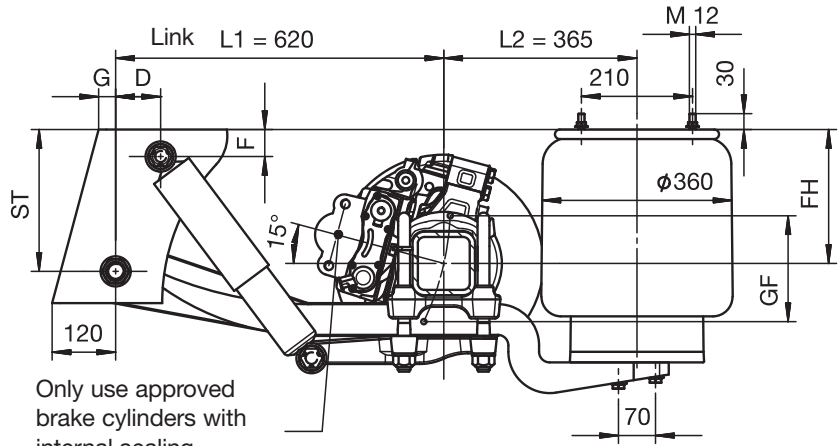
n 120 Axle load 9000 kg

Ride height 220-350 mm

for semi-trailer

SL-SB.01

Sheet-no. 15d



SKHSFSLU 9008 / SKHZFSLU 9008

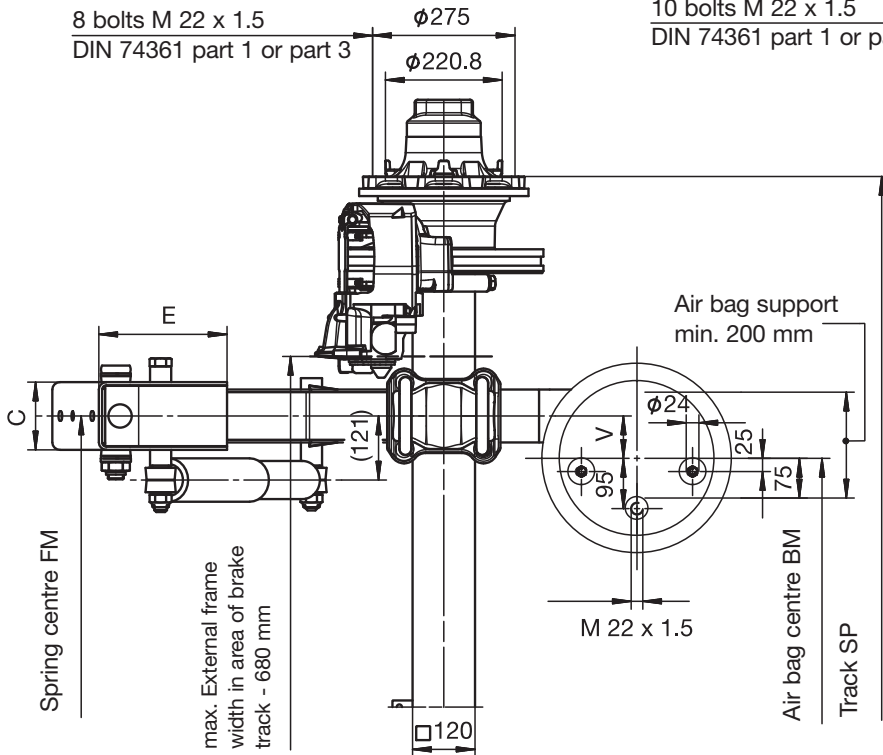
Line	Series	~ adjustable ride height FH					Total spring travel GF ¹⁾	Air bag	Shock absorber 02.37...	Hanger bracket				Shock absorber mount	
		for single axles	for axle units	min. FH with axle raised	Empty without air	Loaded without air				ST	C	E	G	D	F
1 2) 3)	SLU	220-350	230-350	260	160	145	310	36-1	..02.20.00	268	125	242	32	85	51

¹⁾ Lifting heights acc. to TD-1242.0

²⁾ A shut-off valve is required for the raising and lowering version

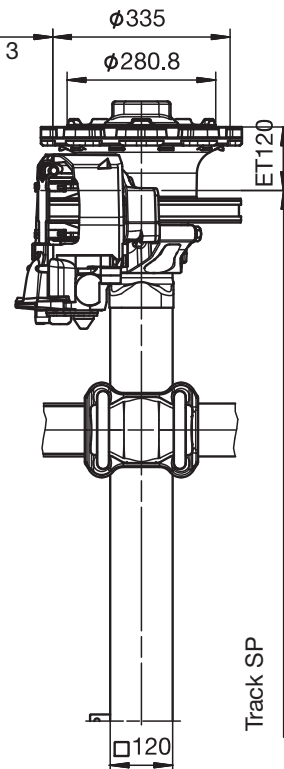
³⁾ Only suitable for semi-trailer

DIRECTION OF TRAVEL



SKHSFSLU 9008 / SKHZFSLU 9008

SKHBFSLU 9010



Axle type	Track SP Axle type		Spring centre FM	Air bag centre BM V=80	Tyres recommended
	9008	9010			
SKHSFSLU 9008	2005	-	1100	940	385/65 R 19.5 445/45 R 19.5
	2075	-	1200	1040	
SKHBFSLU 9010	-	2010	1200	1040	385/65 R 19.5 445/45 R 19.5
	-	2040	1300	1140	
SKHZFSLU 9008	1885	-	980	820	245/70 R 19.5 265/70 R 19.5
	1925	-	980	820	

In long-stroke air suspension systems, note ground clearance on delivery

max. inclination angle of the semi-trailer under full load and lowest adjustable ride height ±1°

With trailing arm L1=620 / L2=365, bag pressures acc. to TE-1188.0 sheet 28

The hanger brackets, air bag supports and the frame must be reinforced so that the forces applied can be absorbed.

See the current BPW installation instructions.

Series SLU

HD-Air-spring axles with disc brake SB 4309

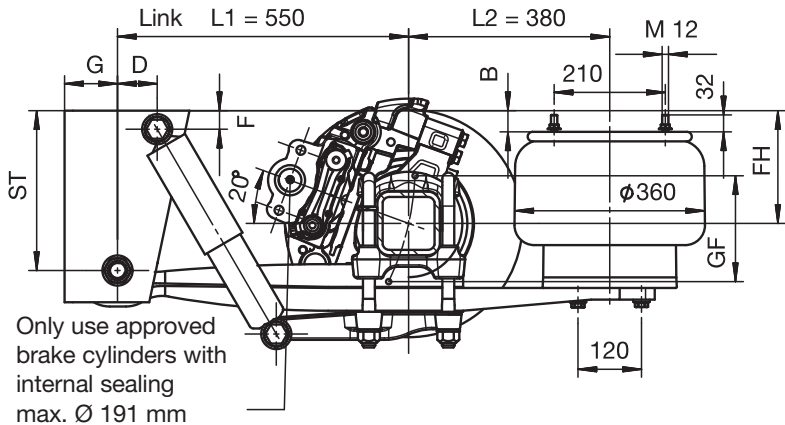
n 120 Axle load 9000 kg

Ride height 250-370 mm

for trailer and semi-trailer

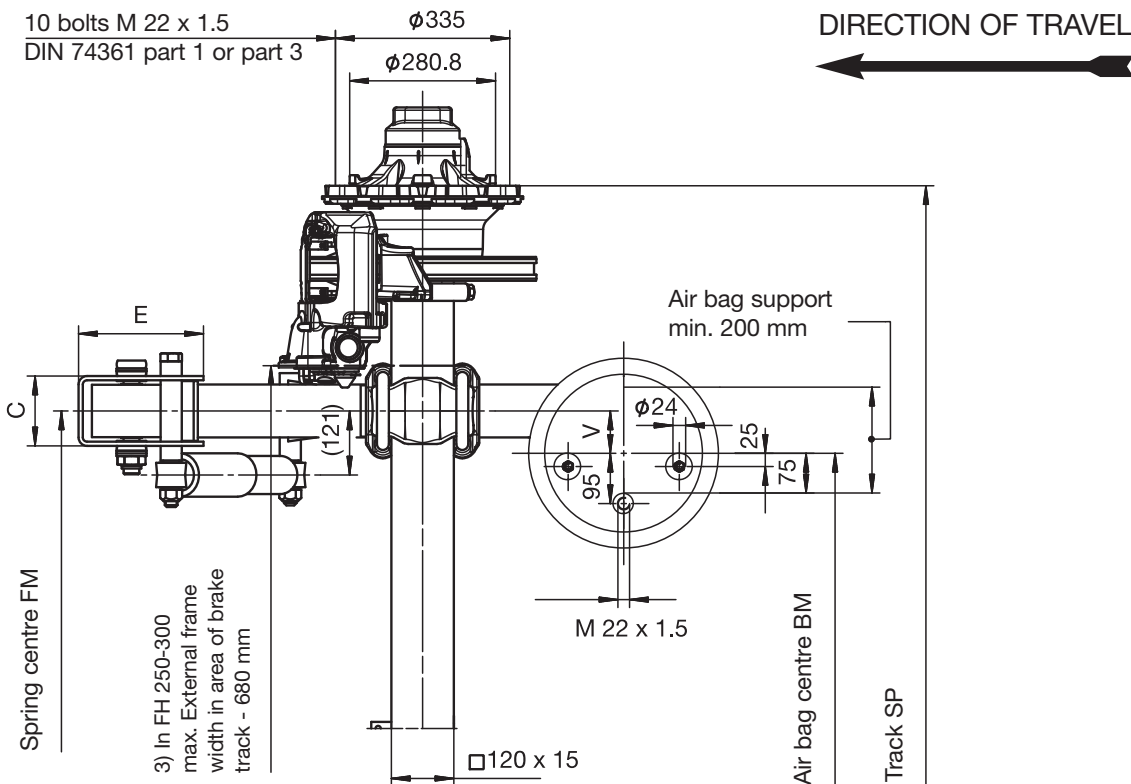
SL-SB.01

Sheet-no. 16



Only use approved brake cylinders with internal sealing max. Ø 191 mm

10 bolts M 22 x 1.5
DIN 74361 part 1 or part 3



Spring centre FM

3) In FH 250-300 max. External frame width in area of brake track - 680 mm

Air bag centre BM

Track SP

Air bag support min. 200 mm

DIRECTION OF TRAVEL ←

Line	Series	≈ adjustable ride height FH					Total spring travel GF ¹⁾	Air bag	Shock absorber 02.37...	Hanger bracket				Shock absorber mount		Console ²⁾
		for single axles	for axle units	min. FH with axle raised	Empty without air	Loaded without air				ST	C	E	G	D	F	
1 ³⁾	SLU	250-300	260-300	290	190	175	220	36	..02.92.00	302	130	236	100	75	35	40
2	SLU	290-350	300-350	330	230	215	220	36	..02.92.00	370	130	328	100	40	100	60
3	SLU	310-370	320-370	350	250	235	220	36	..02.92.00	370	130	328	100	40	100	100

¹⁾ Lifting heights acc. to TD-1242.0

²⁾ The bracket is not included in supplied package

³⁾ Note max. frame width in area of brake

Axle type	Track SP	Spring centre FM	Air bag centre BM V=80	Tyres recommended
SHSFLU 9010	2040	1200	1040	385/65 R 22.5
SHZFSLU 9010	1820	900	740	275/70 R 22.5
	1880	980	820	

max. inclination angle of the semi-trailer under full load and lowest adjustable ride height ±1°

With trailing arm L1=550 / L2=380, bag pressures acc. to TE-1188.0 sheet 7

The hanger brackets, air bag supports and the frame must be reinforced so that the forces applied can be absorbed. See the current BPW installation instructions.

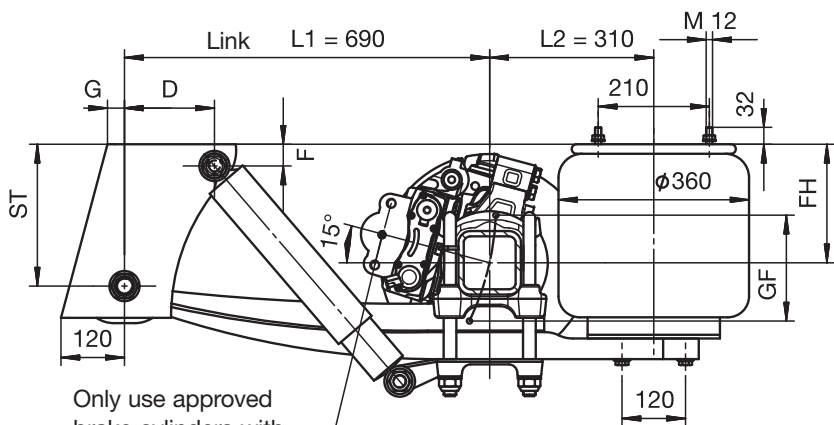
Series SLU

Long-stroke air suspension axles with disc brake SB 3745
n 120 Axle load 9000 kg

Ride height 235-345 mm
for trailer and semi-trailer

SL-SB.01

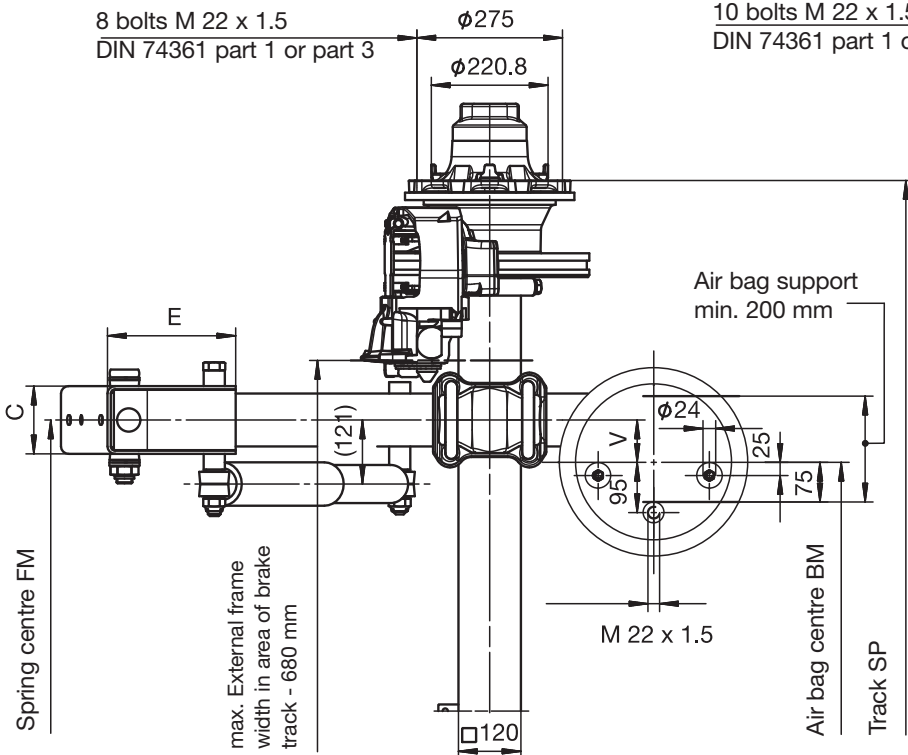
Sheet-no. 16d



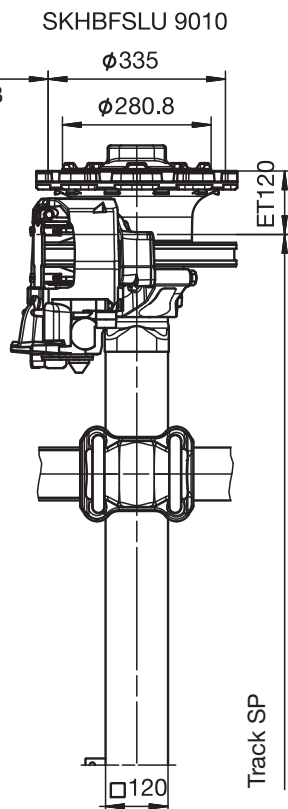
Only use approved brake cylinders with internal sealing max. Ø 191 mm

SKHSFSLU 9008 / SKHZFSLU 9008

8 bolts M 22 x 1.5
DIN 74361 part 1 or part 3



10 bolts M 22 x 1.5
DIN 74361 part 1 or part 3



DIRECTION OF TRAVEL



Line	Series	~ adjustable ride height FH					Total spring travel GF ¹⁾	Air bag	Shock absorber 02.37...	Hanger bracket				Shock absorber mount	
		for single axles	for axle units	min. FH with axle raised	Empty without air	Loaded without air				ST	C	E	G	D	F
1 2)	SLU	235-345	245-345	275	175	160	340	36-1	..02.20.00	268	125	242	32	170	41

¹⁾ Lifting heights acc. to TD-1242.0

²⁾ A shut-off valve is required for the raising and lowering version

Axle type	Track SP Axle type		Spring centre FM	Air bag centre BM V=80	Tyres recommended
	9008	9010			
SKHSFSLU 9008	2005	-	1100	940	385/65 R 19.5 445/45 R 19.5
	2075	-	1200	1040	
SKHBFSLU 9010	-	2010	1200	1040	385/65 R 19.5 445/45 R 19.5
	-	2040	1300	1140	
SKHZFSLU 9008	1885	-	980	820	245/70 R 19.5 265/70 R 19.5
	1925	-	980	820	

In long-stroke air suspension systems, note ground clearance on delivery

max. inclination angle of the semi-trailer under full load and lowest adjustable ride height ±1°

With trailing arm L1=690 / L2=310, bag pressures acc. to TE-1188.0 sheet 19

The hanger brackets, air bag supports and the frame must be reinforced so that the forces applied can be absorbed. See the current BPW installation instructions.